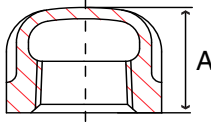
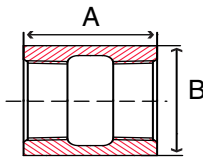


Fig. S3114C & S3116C - Cap



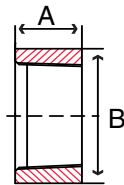
Size in	Part Number		A in	Packing		Weight lb
	304	316		Inner	Master	
1/8	S3114C 001	S3116C 001	0.61	300	1200	0.03
1/4	S3114C 002	S3116C 002	0.87	150	600	0.07
3/8	S3114C 003	S3116C 003	0.96	80	320	0.12
1/2	S3114C 004	S3116C 004	1.10	60	240	0.16
3/4	S3114C 006	S3116C 006	1.10	40	160	0.23
1	S3114C 010	S3116C 010	1.28	18	72	0.36
1-1/4	S3114C 012	S3116C 012	1.30	12	48	0.53
1-1/2	S3114C 014	S3116C 014	1.42	9	36	0.64
2	S3114C 020	S3116C 020	1.48	4	16	1.00
2-1/2	S3114C 024	S3116C 024	1.71	-	15	1.61
3	S3114C 030	S3116C 030	1.89	-	12	2.90
4	S3114C 040	S3116C 040	2.03	-	4	4.95

Fig. S3114CP & S3116CP - Full Coupling



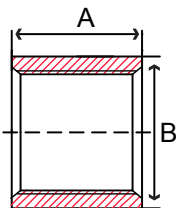
Size in	Part Number		A in	B in	Packing		Weight lb
	304	316			Inner	Master	
1/8	S3114CP001	S3116CP001	0.79	0.55	200	800	0.04
1/4	S3114CP002	S3116CP002	1.06	0.73	120	480	0.07
3/8	S3114CP003	S3116CP003	1.10	0.85	100	400	0.07
1/2	S3114CP004	S3116CP004	1.40	1.05	60	240	0.16
3/4	S3114CP006	S3116CP006	1.48	1.25	30	120	0.19
1	S3114CP010	S3116CP010	1.69	1.56	16	64	0.37
1-1/4	S3114CP012	S3116CP012	1.89	1.91	12	48	0.53
1-1/2	S3114CP014	S3116CP014	1.89	2.17	12	48	0.65
2	S3114CP020	S3116CP020	2.20	2.62	4	16	0.99
2-1/2	S3114CP024	S3116CP024	2.56	3.33	-	8	2.07
3	S3114CP030	S3116CP030	2.80	3.96	-	6	2.77
4	S3114CP040	S3116CP040	3.27	5.10	-	3	5.11
6	S3114CP060	S3116CP060	3.94	7.06	-	1	7.95

Fig. S3114HC & S3116HC - Half Coupling



Size in	Part Number		A in	B in	Packing		Weight lb
	304	316			Inner	Master	
1/8	S3114HC001	S3116HC001	0.43	0.55	400	1600	0.02
1/4	S3114HC002	S3116HC002	0.51	0.73	300	1200	0.03
3/8	S3114HC003	S3116HC003	0.55	0.85	200	800	0.03
1/2	S3114HC004	S3116HC004	0.71	1.05	100	400	0.09
3/4	S3114HC006	S3116HC006	0.77	1.25	60	240	0.09
1	S3114HC010	S3116HC010	0.83	1.56	35	140	0.18
1-1/4	S3114HC012	S3116HC012	0.94	1.91	24	96	0.24
1-1/2	S3114HC014	S3116HC014	0.94	2.17	20	80	0.31
2	S3114HC020	S3116HC020	1.10	2.62	8	32	0.44
2-1/2	S3114HC024	S3116HC024	1.30	3.33	4	16	1.01
3	S3114HC030	S3116HC030	1.42	3.96	-	12	1.37
4	S3114HC040	S3116HC040	1.65	5.10	-	6	2.56
6	S3114HC060	S3116HC060	1.97	7.06	-	1	3.95

Fig. 29DC14 - 304 SS Recessed Drop Pipe Coupling



Size in	Part Number	A in	B in	Packing		Weight lb
				Inner	Master	
1	29DC14010	2.50	1.67	15	90	0.7
1-1/4	29DC14012	2.50	2.03	20	80	0.8
1-1/2	29DC14014	2.50	2.31	7	42	1.0
2	29DC14020	2.50	2.75	5	30	1.2