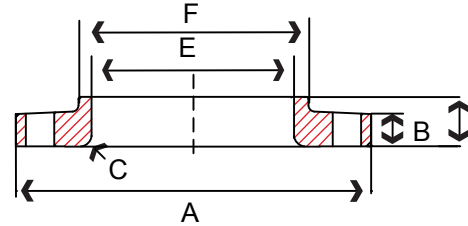


Threaded Flange



Lap Joint Flange

S S F L A N G E S

300# – Threaded Raised Face Flange Flange

Size in	Part Number		A in	B in	C in	D in	E in	Bolt Circle in	Bolt Hole Diameter in	Number of Bolt Holes	Weight lb
	304/304L	316/316L									
1/2	S1034TH004N	S1036TH004N	3.75	0.56	1.38	0.88	1.50	2.62	0.62	4	2
3/4	S1034TH006N	S1036TH006N	4.62	0.62	1.69	1.00	1.88	3.25	0.75	4	3
1	S1034TH010N	S1036TH010N	4.88	0.69	2.00	1.06	2.12	3.50	0.75	4	3
1-1/4	S1034TH012N	S1036TH012N	5.25	0.75	2.50	1.06	2.50	3.88	0.75	4	4
1-1/2	S1034TH014N	S1036TH014N	6.12	0.81	2.88	1.19	2.75	4.50	0.88	4	6
2	S1034TH020N	S1036TH020N	6.50	0.88	3.62	1.31	3.31	5.00	0.75	8	7
2-1/2	S1034TH024N	S1036TH024N	7.50	1.00	4.12	1.50	3.94	5.88	0.88	8	10
3	S1034TH030N	S1036TH030N	8.25	1.12	5.00	1.69	4.62	6.62	0.88	8	13
4	S1034TH040N	S1036TH040N	10.00	1.25	6.19	1.88	5.75	7.88	0.88	8	22

Raised Face 1/16"

300# – Lap Joint Flange

Size in	Part Number	A in	B in	C in	D in	E in	F in	Bolt Circle in	Bolt Hole Diameter in	Number of Bolt Holes	Weight lb
	316/316L										
1/2	S1036LJ004N	3.75	0.56	0.12	0.88	0.90	1.50	2.62	0.62	4	2
3/4	S1036LJ006N	4.62	0.62	0.12	1.00	1.11	1.88	3.25	0.75	4	3
1	S1036LJ010N	4.88	0.69	0.12	1.06	1.38	2.12	3.50	0.75	4	3
1-1/4	S1036LJ012N	5.25	0.75	0.19	1.06	1.72	2.50	3.88	0.75	4	4
1-1/2	S1036LJ014N	6.12	0.81	0.25	1.19	1.97	2.75	4.50	0.88	4	6
2	S1036LJ020N	6.50	0.88	0.31	1.31	2.46	3.31	5.00	0.75	8	7
3	S1036LJ030N	8.25	1.12	0.38	1.69	3.60	4.62	6.62	0.88	8	13
4	S1036LJ040N	10.00	1.25	0.44	1.88	4.60	5.75	7.88	0.88	8	22