

**SPECIFICATION NOTES**

- (1) 6" plain end inlet/outlet
- (2) Dual 4" pumpout port connections
- (3) Unit weight: 236 lbs. For wet weight, add 2,310 lbs. For traffic-rated cover(s), add 90 lbs per cover. For pedestrian cover(s), add 7 lbs per cover.
- (4) Maximum operating temperature: 150° F continuous
- (5) Liquid Capacity: 277 gal  
Grease Capacity (100 GPM): 1,895 lbs (260 gal)  
Grease Capacity (200 GPM): 1,196 lbs (164 gal)  
Solids Capacity: 69 gal
- (6) Factory Rating:  
Grease Capacity (250 GPM): 500 lbs (68 gal)
- (7) This unit does not require flow control for 100 GPM applications, but a built in flow control is provided for 200 GPM; for series installations only install flow control on the first unit if necessary
- (8) For gravity drainage applications only
- (9) Do not use for pressure applications
- (10) Cover placement allows full access to tank for proper maintenance
- (11) Vent not required unless per local code
- (12) Engineered inlet and outlet diffusers with inspection ports are removable to inspect / clean piping
- (13) Integral air relief / Anti-siphon / Sampling access
- (14) Cover adapters provide an adjustable height range of 5"
- (15) Designed for below-grade, above-grade, indoor or outdoor installations
- (16) Safety Star® (450 lbs load capacity) is an access restrictor built into each cover adapter to prevent accidental entry into tanks

**CERTIFIED PERFORMANCE**

Great Basin® hydromechanical grease interceptors are third party performance-tested and listed by IAPMO to ASME A112.14.3 and CSA B481.1 grease interceptor standards and greatly exceed requirements for grease separation and storage. They are compliant to the Uniform Plumbing Code and the International Plumbing Code.

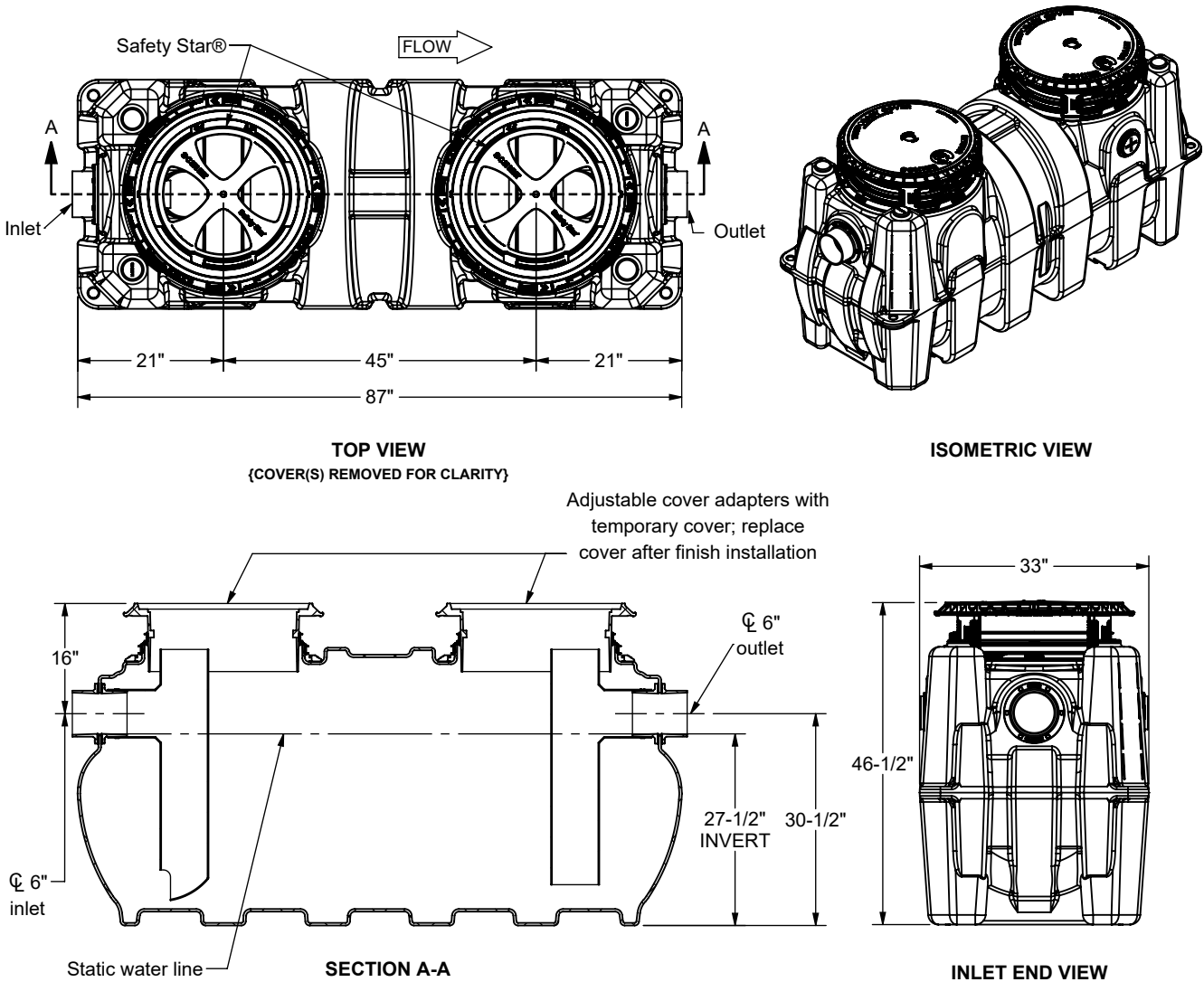
**ENGINEER SPECIFICATION GUIDE**

Schier Great Basin® grease interceptor model GB-250 shall be lifetime guaranteed and made in USA of seamless, molded polyethylene with minimum 3/8" uniform wall thickness. Interceptor shall be furnished for above or below-grade installation with adjustable cover adapter, Safety Star® access restrictor built into each cover adapter, and built in flow control (for 200GPM only). This unit is certified for hydromechanical performance to ASME A112.14.3 (Type D for 100 GPM and Type C for 200 GPM) and CSA B481.1. Interceptor flow rate shall be 100 GPM or 200GPM. Interceptor grease capacity shall be 1,895 lbs @100 GPM or 1,196 lbs @200 GPM.



**COVERS SOLD SEPARATELY**

This unit is provided with temporary cover(s) intended for the duration of jobsite installation. Purchase one of the following finish covers.

- T24-GI (8044-000-01): Traffic-rated cast (AASHTO H-20) iron cover shall provide water/gas-tight seal and have a minimum of 16,000 lbs load capacity. For outdoor installation.
- P24-GI (8045-000-01): Pedestrian-rated poly cover shall provide water/gas-tight seal and have a minimum of 2,000 lbs load capacity. For indoor installation.



**SPECIFICATION SHEET**

<div><b>SCHIER®</b></div> <div>6455 Woodland Dr Shawnee, KS 66218</div> <div>tel: 913-951-3300 fax: 913-951-3399</div> <div>schierproducts.com</div> <div>Made in the U.S.A.</div>	<b>MODEL NUMBER</b>		<b>GB-250</b>							
	<b>PART NUMBER</b>		4055-301-01							
	<b>DESCRIPTION</b>		GB-250 GREASE INTERCEPTOR 100 GPM / 200 GPM, 6" PLAIN END INLET/OUT W/ PUMPOUT PORT CONNECTIONS							
	<b>DRAWN BY</b>		C.FINCHAM							
	<b>DATE</b>		05/15/2025		<b>REV</b>	A	<b>ECO</b>	00104		PROPRIETARY AND CONFIDENTIAL: THE INFORMATION CONTAINED IN THIS DRAWING IS THE SOLE PROPERTY OF SCHIER PRODUCTS. ANY REPRODUCTION IN PART OR AS A WHOLE WITHOUT THE WRITTEN PERMISSION OF SCHIER PRODUCTS IS PROHIBITED.