

SPECIFICATION NOTES

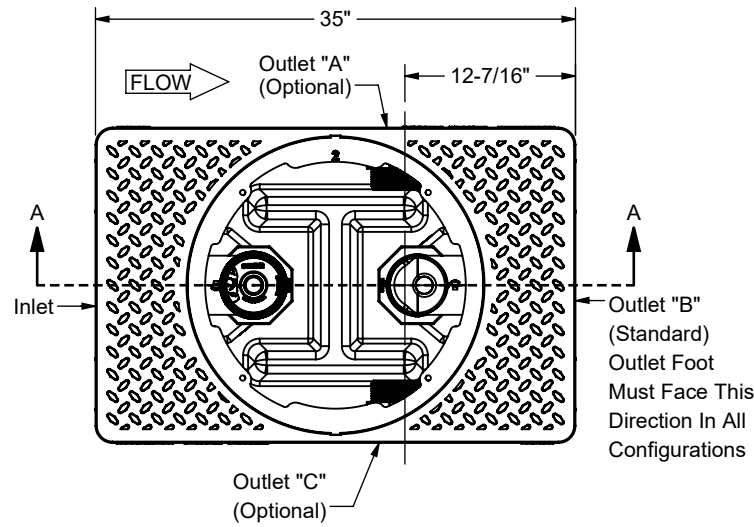
- (1) 4" FPT inlet/outlet with 3" plain end fittings
- (2) Unit weight: 49 lbs. For wet weight, add 167 lbs.
- (3) Maximum operating temperature: 150° F continuous
- (4) Liquid Capacity: 20 gal
Grease Capacity (35 GPM): 119.3 lbs (16.3 gal)
Solids Capacity: 1.8 gal
- (5) This unit does not require flow control for 35 GPM applications
- (6) For gravity drainage applications only
- (7) Do not use for pressure applications
- (8) Cover placement allows full access to tank for proper maintenance
- (9) Vent not required unless per local code
- (10) Engineered inlet and outlet diffusers with inspection ports are removable to inspect / clean piping
- (11) Integral air relief / anti-siphon / sampling access
- (12) Designed for indoor, on-floor, below-grade or low-profile under sink installations

CERTIFIED PERFORMANCE

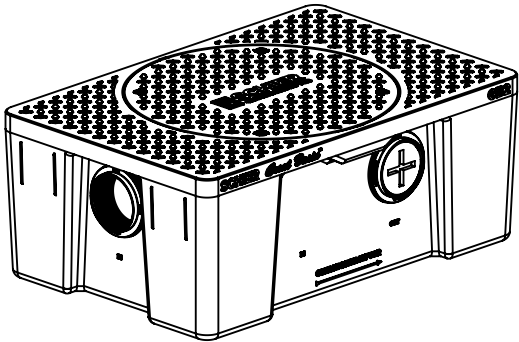
Great Basin® hydromechanical grease interceptors are third party performance-tested and listed by IAPMO to ASME A112.14.3 and CSA B481.1 grease interceptor standards and greatly exceed requirements for grease separation and storage. They are compliant to the Uniform Plumbing Code and the International Plumbing Code.

ENGINEER SPECIFICATION GUIDE

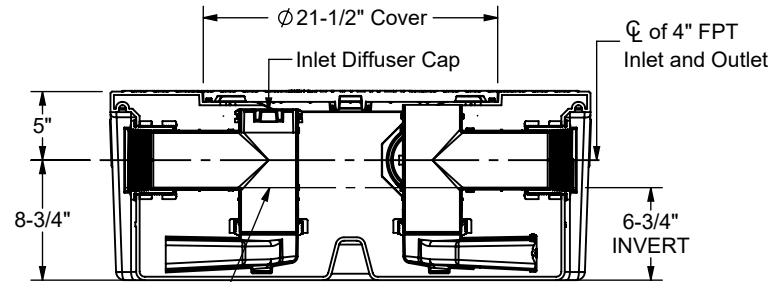
Schier Great Basin® grease interceptor model GB2 shall be lifetime guaranteed and made in USA of seamless, molded polyethylene with minimum 5/16" uniform wall thickness. Inlet diffuser cap shall be PVC. Interceptor shall be furnished for above or below-grade installation. This unit is certified for hydromechanical performance to ASME A112.14.3 (Type D) and CSA B481.1, with field cut riser system and three outlet options. Interceptor flow rate shall be 35 GPM. Interceptor grease capacity shall be 119.3 lbs (16.3 gal) @ 35 GPM. Cover shall provide water/gas-tight seal and have a minimum of 450 lbs load capacity.



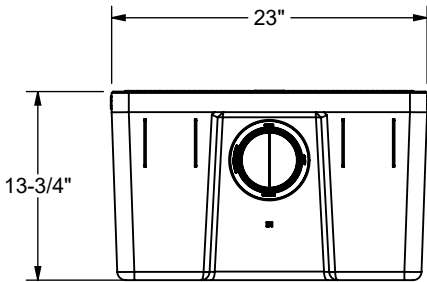
TOP VIEW
(COVER REMOVED FOR CLARITY)



ISOMETRIC VIEW


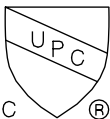


SECTION A-A



INLET END VIEW

SPECIFICATION SHEET

<div>SCHIER®</div> <div>6455 Woodland Dr Shawnee, KS 66218</div> <div>tel: 913-951-3300 fax: 913-951-3399</div> <div>schierproducts.com</div> <div>Made in the U.S.A.</div>	MODEL NUMBER		GB2			
	PART NUMBER		4065-001-06			
	DESCRIPTION		GB2 GREASE INTERCEPTOR 35 GPM, 4" FPT INLET/OUTLET, WITH 3" PLAIN END FITTING ADAPTERS AND PEDESTRIAN-RATED COVER			
	DRAWN BY		D.KLINE			
	DATE		10/06/2025	REV	A	ECO
						
PROPRIETARY AND CONFIDENTIAL: THE INFORMATION CONTAINED IN THIS DRAWING IS THE SOLE PROPERTY OF SCHIER PRODUCTS. ANY REPRODUCTION IN PART OR AS A WHOLE WITHOUT THE WRITTEN PERMISSION OF SCHIER PRODUCTS IS PROHIBITED.						