

Submittal Data

PROJECT:	UNIT TAG:	QUANTITY:
REPRESENTATIVE: _____	TYPE OF SERVICE:	DATE: _____
ENGINEER:	SUBMITTED BY:	DATE:
CONTRACTOR:	APPROVED BY:	DATE:
	ORDER NO.:	DATE:

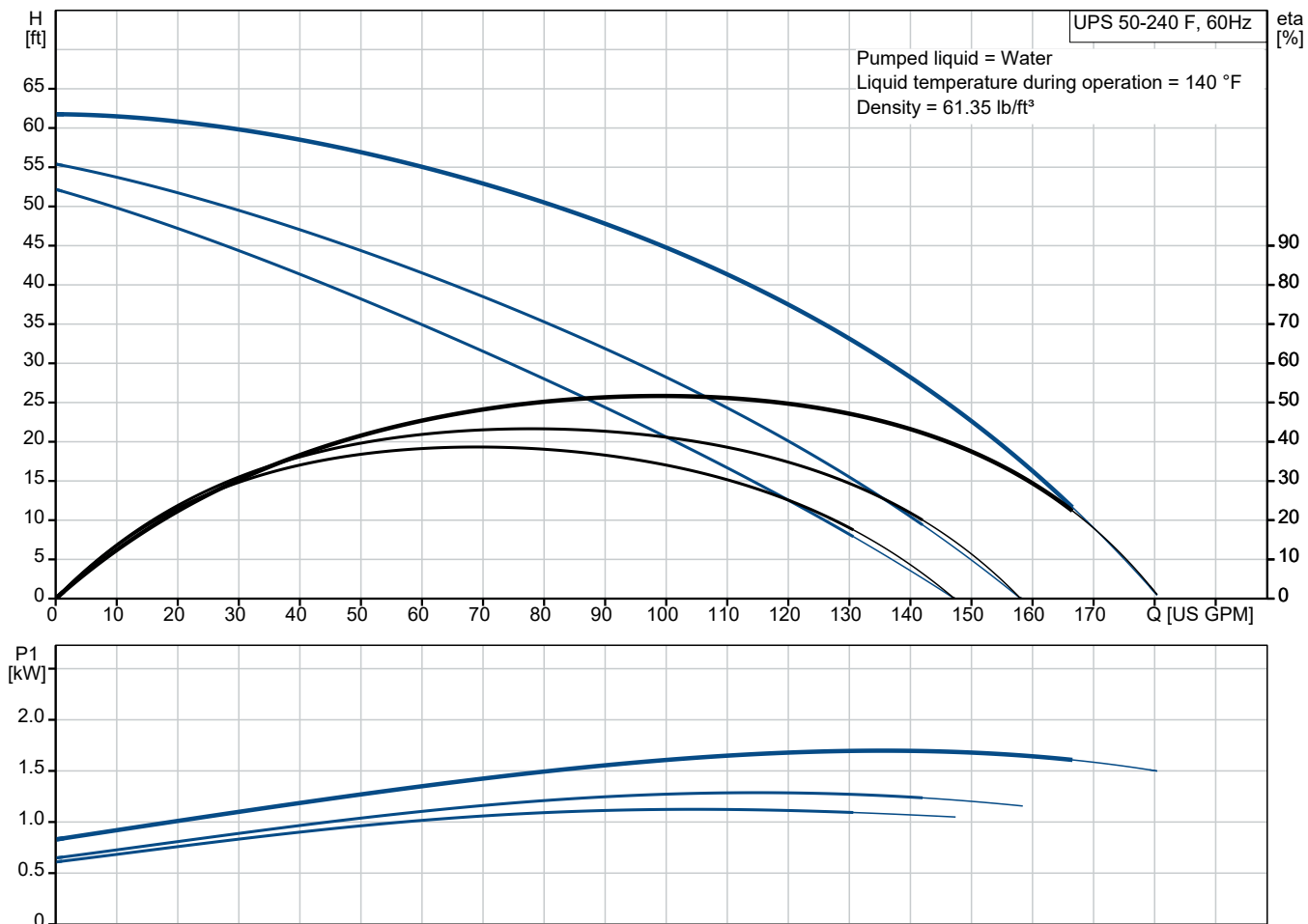


UPS 50-240 F

UPS is a three-speed circulator pump designed for heating and air-conditioning systems and is also used for central and district heating systems. The pump provides reliable and maintenance-free operation.

Note! Product picture may differ from actual product

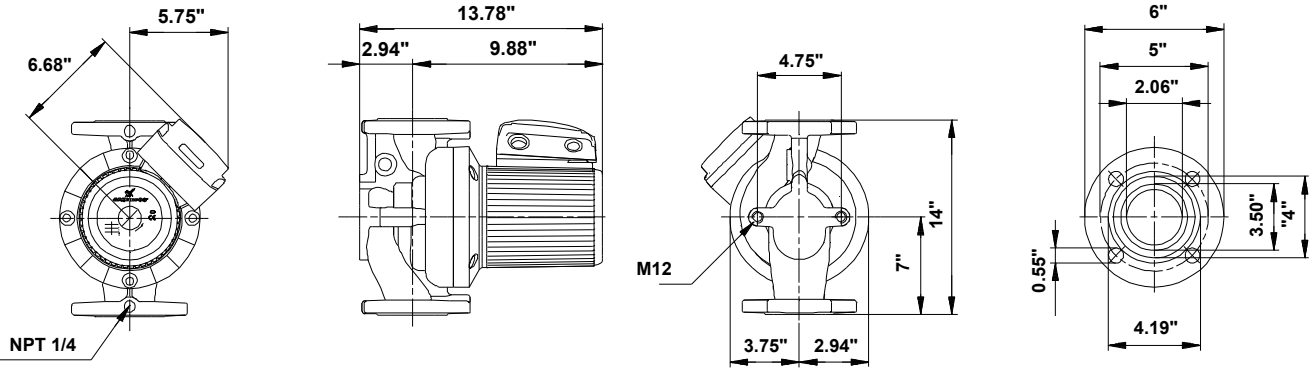
Conditions of Service	Pump Data	Motor Data
Liquid: Water	Liquid temperature range: 14 .. 248 °F	Max. power input: 1700 W
Temperature: 140 °F	Maximum ambient temperature: 104 °F	Rated voltage: 208-230 V
Specific Gravity: 0.985	Pipe connection: GF 50	Mains frequency: 60 Hz
	Product number: 96402882	Enclosure class: X4D
		Thermal protection: external



Submittal Data

4

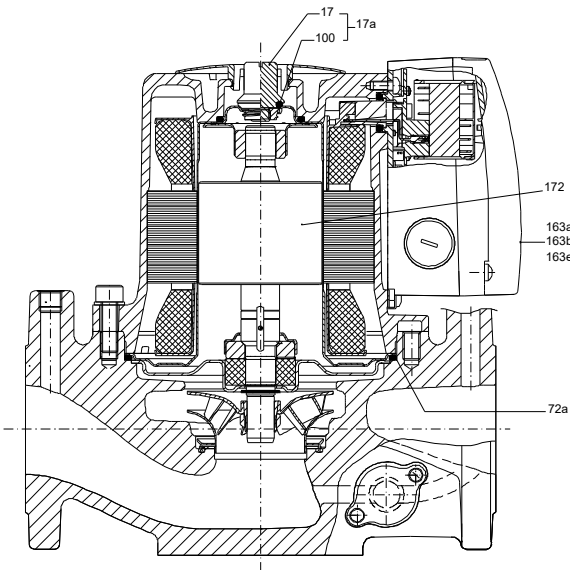
3



Materials:

Pump housing: Cast iron
ASTM 35 B - 40 B

Impeller: Stainless steel
AISI 304
EN 1.4301



Qty.	Description
------	-------------

1	UPS 50-240 F
---	--------------



Note! Product picture may differ from actual product

Product No.: [96402882](#)

The pump is of the canned rotor type, i.e. pump and motor form an integral unit without shaft seal and with only two gaskets for sealing. The bearings are lubricated by the pumped liquid.

In order to avoid problems in connection with disposal, great importance has been attached to using as few different materials as possible.

The pump is characterized by:

- * 3 speed motor.
- * Ceramic radial bearings.
- * Carbon axial bearing.
- * Stainless steel rotor can, bearing plate and rotor cladding.
- * Aluminium alloy stator housing.
- * Cast iron pump housing.
- * Stator with built-in thermal switch.

The motor is a 3-phase motor.

The pump is supplied with a standard module in the terminal box.

The standard module is to be connected to the mains supply via external contactor.

Controls:

Relay: without relay

Liquid:

Pumped liquid: Water

Liquid temperature range: 14 .. 248 °F

Selected liquid temperature: 140 °F

Density: 61.35 lb/ft³

Technical:

Approvals: CCSAUS

Materials:

Pump housing: Cast iron
EN 1561 EN-GJL-250
ASTM 35 B - 40 B

Impeller: Stainless steel
EN 1.4301
AISI 304



Company name:

Created by:

Phone:

Date:

07/04/2025

Qty.	Description
------	-------------

1	<div>Installation: Range of ambient temperature: 32 .. 104 °F Maximum operating pressure: 145.04 psi Pipe connection standard: USA Type of connection: DIN Pipe connection: GF 50 Pressure rating for connection: PN 10 Port-to-port length: 14 in</div> <div>Electrical data: Power input in speed 1: 1.5422 HP Power input in speed 2: 1300 W Max. power input: 1700 W Mains frequency: 60 Hz Rated voltage: 3 x 208-230 V Current in speed 1: 3.5 A Current in speed 2: 3.95 A Current in speed 3: 5.3 A Cos phi in speed 1: 0.82 Cos phi in speed 2: 0.83 Cos phi: 0.81 Enclosure class (IEC 34-5): X4D Insulation class (IEC 85): H Ex-protection standard: CONTACT Winding resistance: 7.8 - 10.2 Ohm</div> <div>Others: Terminal box position: 1.30H Net weight: 60.6 lb Gross weight: 72.8 lb Shipping volume: 3.46 ft³ Country of origin: RS Custom tariff no.: 8413.70.2005</div>
---	---