



SERIES 16H

**Commercial, Gas Fired,
Atmospheric,
Hot Water Boiler**

Small in Size, Big in Features:

- Four sizes from 340 to 505 MBH input
- Thermal efficiency ratings up to 81%
- Cast iron sections and cast iron push nipples
- Atmospheric vent design
- Available with CSD-1 electronic control set (models 16H - 410/460/505 only)
- Combustible floor installation with optional base
- Controls under jacket for security and a clean appearance
- Shipped semi-packaged for convenience
- LP available on standard EI builds
- Compact unit is easy to move and fits through standard doorways

**Quality
Value &
Service**



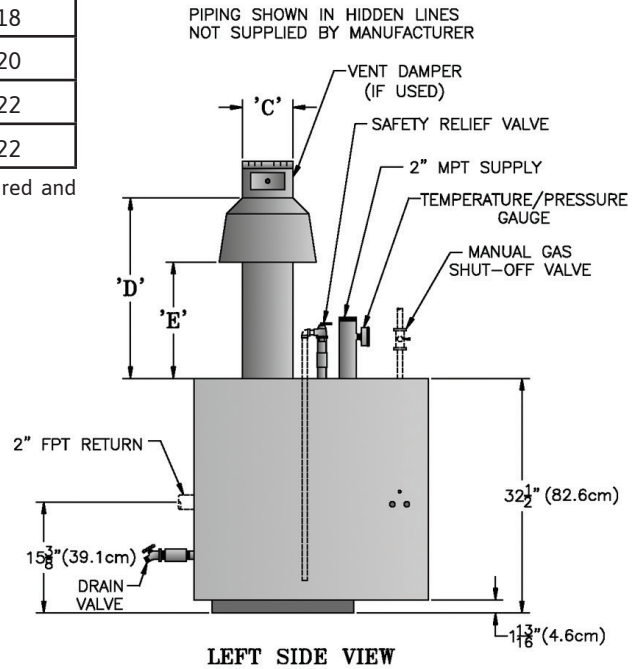
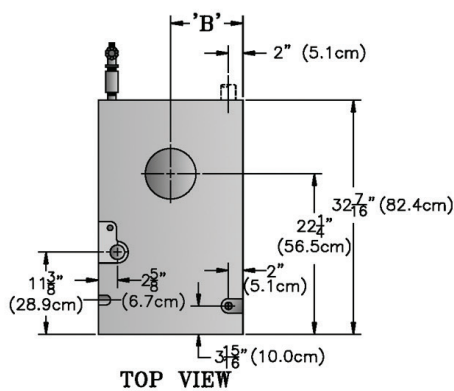
See back side for specifications.

SERIES 16H

TECHNICAL SPECIFICATIONS

MODEL	DIMENSIONS (IN.)				
	A	B	C	D	E
16H-340	27-1/2	13-3/4	8	27-13/16	18
16H-410	31-1/4	15-5/8	9	30-13/16	20
16H-460	35	17-1/2	10	33-1/2	22
16H-505	38-3/4	19-3/8	10	33-1/2	22

1. Not for direct installation on combustible flooring. A heat shield is required and available for installation on combustible floors and on concrete.
2. External draft hood supplied - may not be cut or altered.



MODEL	INPUT (MBH)	HEATING CAPACITY (MBH)	AHRI NET RATING WATER (MBH)	THERMAL EFFICIENCY (%)	WATER CONTENT (GAL)	APPROX. SHIPPING WEIGHT (LBS)	CSD-1 AVAILABLE
16H-340	340	275	239	81.0	15.9	870	N/A
16H-410	410	328	285	80.1	17.9	950	YES
16H-460	460	370	322	80.4	19.9	1040	YES
16H-505	505	406	353	80.5	21.9	1140	YES

1. Not available for use in elevations above 2,000 ft.
2. The Net Water Ratings are based on a piping and pickup allowance of 1.15.
3. Maximum allowable working pressure is 50 PSI.
4. The manufacturer should be consulted before selecting a boiler for installations having unusual piping and pickup requirements, such as intermittent system operation, extensive piping systems, etc.

All Series 16H boiler models include a full one-year warranty. A 10-year limited warranty is provided for the heat exchanger. Visit VelocityBoilerWorks.com for details.

STANDARD EQUIPMENT

- 50 PSI safety relief valve
- Probe-style manual reset low water cutoff (models 16H-410/460/505 only)

OPTIONAL EQUIPMENT

- Base for installation on combustible floors
- Vent damper (not available on CSD-1 builds)



The Mega-Stor® indirect water heater utilizes the energy created by your boiler to produce abundant hot water for your building. Mega-Stor water heaters come in a variety of sizes from 26 to 119 gallons to meet a multitude of residential and commercial needs.

Specifications are subject to change without notice.

