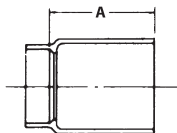


PART NO. PVC 123 R
Hub Adapter, Cast Iron, Increaser

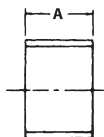
(Adapts DWV Spigot to Cast Iron Hub)

HUB X SPIGOT

SIZE	A
1½ x 2 ^(P) (PVC)	3½
3 x 4 ^(P) (PVC)	4


PART NO. 130
Repair Coupling
HUB X HUB

SIZE	A
1½ (PVC)	1 ⁵ / ₈
1½ (ABS)	1½
2 (PVC)	1 ⁷ / ₈
2 (ABS)	1 ¹³ / ₁₆
3	3 ³ / ₁₆
4 (PVC)	3 ³ / ₄
4 (ABS)	3 ¹⁷ / ₃₂
6 (PVC)	6¼
8 ^(F) (PVC)	8 ³ / ₁₆
10 ^(F) (PVC)	10 ³ / ₁₆
12 ^(F) (PVC)	12 ³ / ₁₆


^(P) Plain End: Joint can be made with compression gasket only.

^(F) Fabricated

Note: If PVC or ABS is not listed for a specific size, that size fitting is available in PVC and ABS materials, and the dimensions listed are the same for both materials.