

CHANNEL NUTS WITH & WITHOUT SPRING

Assures a positive locking of the strut channels to fittings

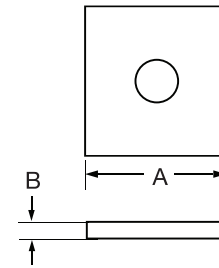
- Carbon steel nuts with special formed teeth in the parallel channel recesses
- Made to grip the return lip of the strut channel
- Shearing action of the teeth assures a positive locking of the strut channels to the fittings

Sizes: 1/2" - 3/4"

Material: Carbon Steel

Finish: Zinc

THREAD SIZE	SHORT SPRING CHANNEL NUTS	LONG SPRING CHANNEL NUTS	ITEM CHANNEL NUTS	A	B	C	D SHORT	D LONG	E	WEIGHT LBS	INNER BOX	MASTER BOX	PALLET QTY
1/4"	NSCS-Z14	NSCH-Z14	NSCN-Z14	1-3/8	3/4	1/4	21/32	1-1/2	1/4	0.07	50	200	9600
5/16"	NSCS-Z516	-	NSCN-Z516	1-3/8	3/4	1/4	21/32	1-1/2	1/4	0.08			
7/16"	NSCS-Z716	-	NSCN-Z716	1-3/8	3/4	3/8	21/32	1-1/2	3/8	0.09			
3/8"	NSCS-Z38	NSCH-Z38	NSCN-Z38	1-3/8	3/4	3/8	21/32	1-1/2	3/8	0.10	50	200	9600
1/2"	NSCS-Z12	NSCH-Z12	NSCN-Z12	1-3/8	3/4	1/2	21/32	1-1/2	1/2	0.13	50	200	9600
5/8"	NSCS-Z58	NSCH-Z58	NSCN-Z58	1-3/8	1-1/8	1/2	21/32	1-1/2	5/8	0.15	50	200	9600
3/4"	NSCS-Z34	NSCH-Z34	NSCN-Z34	1-3/8	1-1/8	1/2	21/32	1-1/2	3/4	0.15	50	200	9600
7/8"	-	-	NSCN-Z78	1-3/8	1-1/8	1/2	-	-	3/4	0.15			



SQUARE CHANNEL WASHER

For use with strut channels

- Channel square washer

Sizes: 3/8" - 5/8"

Material: Carbon Steel

Finish: Zinc

SIZE INCHES	ITEM SQUARE WASHER	A	B	WEIGHT	INNER BOX	MASTER BOX
3/8"	WSCH-Z38	1-5/8	1/4	.08	100	600
1/2"	WSCH-Z12	1-5/8	1/4	.10	100	600
5/8"	WSCH-Z58	1-5/8	1/4	.20	100	600