

CLEAN CHECK®

Extendable Backwater Valve

Description

Clean Check® extendable backwater valves provide reliable protection against sewage backups caused by blocked sewer systems, system overloads, or groundwater flooding. These valves can extend up to 12 feet below ground level, eliminating the need for expensive maintenance holes. They are designed for easy access and maintenance from ground level. Each valve features a durable T-shaped body, a top and bottom collar, and a replaceable PVC flapper. During back-pressure events, the flapper effectively blocks reverse flow, preventing sewage backups. The heavy-duty flapper can withstand pressures of up to 75 psi, ensuring robust performance and long-lasting reliability.

Applications

Prevents sewage backup into plumbed structures caused by a plugged sewer system, excess volume, or groundwater flooding.

Recommended for

PVC, ABS



Features | Benefits

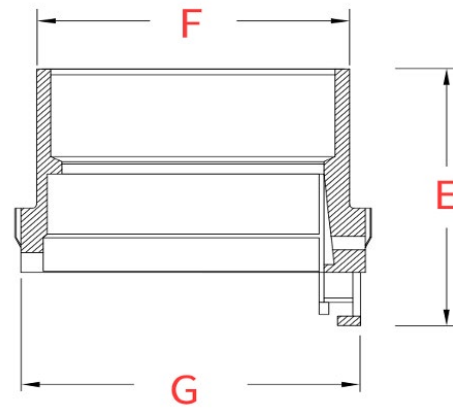
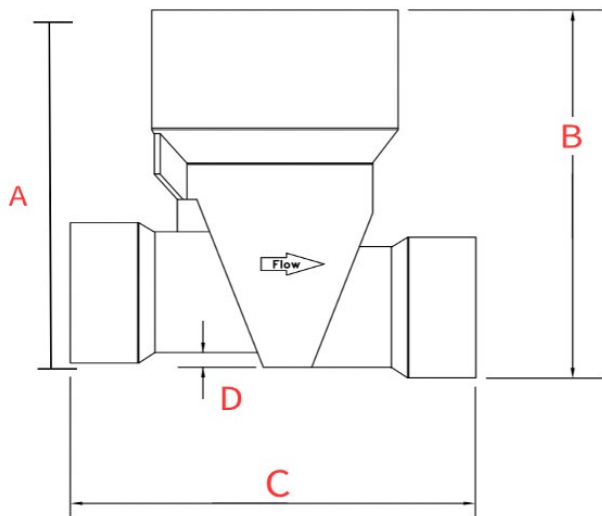
- No manhole required
- Installs discreetly outside - up to 12' below ground level
- Above-ground outdoor maintenance accessibility eliminates hidden access to indoor applications and the sewer odor and mess of indoor maintenance
- Complies with UPC, IPC, and IRC codes & ASME and ICC-ES standards

Packaging

Code	Size	Qty. per Case	Lbs. per Case	Cubic Ft per Case
97003	Clean Check 3" ABS Extendable Backwater Valve	1	5.50	0.57
97004	Clean Check 4" ABS Extendable Backwater Valve	1	6.00	0.63
97014	Clean Check 4" ABS Extendable Backwater Valve w/Adapter	1	8.00	1.79
97023	Clean Check 3" PVC Extendable Backwater Valve	1	7.00	0.50
97024	Clean Check 4" PVC Extendable Backwater Valve	1	8.00	0.50
97026	Clean Check 6" PVC Extendable Backwater Valve	1	15.00	1.27
97034	Clean Check 4" PVC Extendable Backwater Valve w/Adapter	1	8.00	0.63

CLEAN CHECK®

Extendable Backwater Valve



	A (outlet)	B (inlet)	C	D	E	F	G
3" valve		10	10.2	0.4	4.9	5	5.5
4" valve		10	10.2	0.4	4.9	5	5.5
6" valve		13.3	16	0.5	5.3	5	7.8

Material Breakdown:

Body:	PVC or ABS
Deep Bury Collar:	PVC or ABS
Flapper:	PVC
Flapper Coating:	TPV

WARNING: This product can expose you to chemicals including titanium dioxide, which is known to the State of California to cause cancer, birth defects, or other reproductive harm. For more information, go to www.P65Warnings.ca.gov.

Approvals

- UPC
- ICC-ES
- State of Wisconsin
- Approved by the Commonwealth of Massachusetts



Limited Warranty



For more information on our product limited warranty, visit RectorSeal.com.

Manufactured by

RectorSeal, LLC

2601 Spenwick Drive, Houston, TX 77055, USA • 800-231-3345 • Fax 800-441-0051 • rectorseal.com

A CSW Industrials Company. RectorSeal, the logos and other trademarks are property of RectorSeal, LLC, its affiliates or its licensor's and are protected by copyright, trademark and other intellectual property laws, and may not be used without permission. RectorSeal reserves the right to change specifications without prior notice. ©2025 RectorSeal. All rights reserved. R50382-0125