

CLAMPS

Half Clamp w/ Nail



- Friction ring
- Durable Polyethylene construction grips



PART #	SIZE / DESCRIPTION	INNER	MASTER
HC012	1/2" with Nail	50	2000
HC034	3/4" with Nail	50	1500
HC001	1" with Nail	50	1000

Full Pipe Strap w/ Nail



- Friction ring
- Durable Polyethylene construction grips
- Tubing is not damaged if anchor is over driven



PART #	SIZE / DESCRIPTION	INNER	MASTER
PS012	1/2" with Nail	50	2000
PS034	3/4" with Nail	50	1500

Standard Pipe Clamp



- Plastic 2-Hole pipe clamps
- Isolates tubing from framing



PART #	SIZE / DESCRIPTION	INNER	MASTER
PC012	1/2"	50	2000
PC034	3/4"	50	1000
PC001	1"	50	800
PC114	1-1/4"	50	500
PC112	1-1/2"	50	400
PC002	2"	50	400

Suspension Clamp



- Plastic 2-Hole pipe clamps
- Isolates tubing from framing



PART #	SIZE / DESCRIPTION	INNER	MASTER
SC012	1/2"	50	1500
SC034	3/4"	50	1200
SC001	1"	50	1000
SC114	1-1/4"	50	800
SC112	1-1/2"	25	600
SC002	2"	25	400

Metal Stud Insulator



- Reduces noise from tubing expansion
- Supports copper, PEX, CPVC, PB tubing through metal studs
- For use on metal studs 18GA or lighter

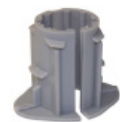


PART #	SIZE / DESCRIPTION	INNER	MASTER
MSI012	1/2"	50	1600
MSI034	3/4"	50	1600
MSI001	1"	50	2000

Pipe Insulator Clamp



- Plastic pipe insulators
- Isolates supply tubing from wood framing



PART #	SIZE / DESCRIPTION	INNER	MASTER
PIC012	1/2"	50	400
PIC034	3/4"	50	400
PIC001	1"	50	400

Plastic Bend Support



- Plastic with nail tab



PART #	SIZE / DESCRIPTION	INNER	MASTER
PBS012	1/2"	10	400
PBS034	3/4"	10	200

J-Hook w/ Nail



- Plastic J-hooks
- Includes nails



PART #	SIZE / DESCRIPTION	INNER	MASTER
JH012	1/2"	10	800
JH034	3/4"	10	800
JH112	1-1/2"	10	200
JH002	2"	10	180
JH003	3"	10	120
JH004	4"	10	80