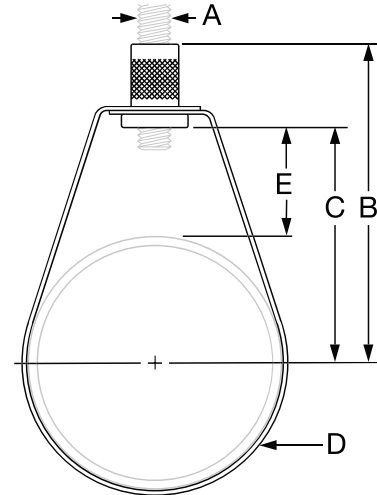




EPOXY COATED
PROTECTIVE SHIELD SYSTEM



EPOXY COATED SWIVEL HANGERS



Designed for suspending pipe with vertical adjustment

- Knurled insert nut allows for vertical adjustment after installation
- Underwriters Laboratories Listed (UL) and Factory Mutual Approved (FM)
- National Fire Protection Association Standardized (NFPA)
- Complies with Federal Specification WW-H-171E & A-A-1192A Type 10, Manufacturers Standardization Society (MSS) SP-69 & SP-58 Type 10
- Designed for the suspension of insulated pipe lines

Sizes: 1/2" - 8"

Material: Steel

Finish: Epoxy Coated

Approvals: UL, FM, NFPA, Complies with MSS SP-69 & SP-58 Type 10, WW-H-171E & A-A-1192A Type 10

SIZE INCHES	ITEM EPOXY COATED	MAX LOAD	WEIGHT LBS	A ROD SIZE	B	C	D	E ADJUSTMENT	INNER BOX	MASTER BOX	PALLET QTY
1/2"	HSRN-EP12	300	0.1	3/8	2-5/32	1-5/8	5/8	1-1/16	10	100	6400
3/4"	HSRN-EP34	300	0.1	3/8	2-3/8	1-51/64	5/8	1-1/8	10	100	6400
1"	HSRN-EP01	300	0.1	3/8	2-19/32	1-61/64	5/8	1-1/8	10	100	4800
1-1/4"	HSRN-EP114	300	0.11	3/8	2-51/64	2-1/8	5/8	1-1/16	10	100	4800
1-1/2"	HSRN-EP112	300	0.11	3/8	2-57/64	2-7/32	5/8	1-1/16	10	100	4800
2"	HSRN-EP02	300	0.14	3/8	3-3/32	2-29/64	5/8	1-1/16	10	100	4800
2-1/2"	HSRN-EP212	525	0.19	3/8	4-9/32	3-21/32	7/8	1-7/8	-	50	2400
3"	HSRN-EP03	525	0.23	3/8	4-9/16	3-3/4	7/8	2	-	50	2400
3-1/2"	HSRN-EP312	650	0.25	3/8	4-47/64	3-15/16	7/8	2-1/4	-	50	2400
4"	HSRN-EP04	650	0.3	3/8	5-3/32	4-29/64	7/8	2-3/8	-	25	1200
5"	HSRN-EP05	1000	0.5	1/2	5-47/64	5-11/32	3/4	2-7/16	-	25	1200
6"	HSRN-EP06	1000	0.58	1/2	6-13/16	6-1/16	3/4	2-7/8	-	15	720
8"	HSRN-EP08	1000	0.9	1/2	8-21/64	7-9/16	3/4	3-3/8	-	10	480