

CONDUIT CLAMP

Designed to secure and support EMT, IMC & Rigid conduit

Sizes: 1/2" - 4"

- Suspended EMT & Rigid conduit from overhead supports
- Nuts & bolts included
- Metal Conduit Compatible Conduit Fitting
- Corrosion resistant for indoor and outdoor use
- cULus Listed

Material: Carbon Steel

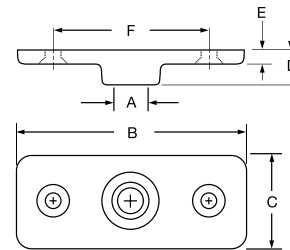
Finish: Electro Galvanized

Approvals: UL Listed

SIZE INCHES	ITEM ELECTRO GALVANIZED	MAX LOAD	GAUGE SIZE	WEIGHT LBS	BOLT SIZE	TOP HOLE SIZE	INNER BOX	MASTER BOX	PALLET QTY
1/2"	CH-GE12	400	18	1.60	1/4-20	6.5mm	50	300	18000
3/4"	CH-GE34	400	18	1.60	1/4-20	6.5mm	50	200	12000
1"	CH-GE01	400	18	1.90	1/4-20	6.5mm	50	150	9000
1-1/4"	CH-GE114	400	16	1.90	1/4-20	6.5mm	50	100	6000
1-1/2"	CH-GE112	400	16	1.90	1/4-20	6.5mm	25	100	6000
2"	CH-GE02	400	16	2.50	1/4-20	6.5mm	-	70	4200
2-1/2"	CH-GE212	400	16	2.50	1/4-20	8.2mm	-	50	3000
3"	CH-GE03	400	14	2.50	1/4-20	8.2mm	-	40	2400
4"	CH-GE04	400	14	2.50	1/4-20	8.2mm	-	25	1500



EPOXY COATED PROTECTIVE SHIELD SYSTEM



CEILING FLANGES

Designed for attaching hanger rod from ceiling

Sizes: 1/4" - 1/2"

- Supports threaded rod from ceilings or walls
- Available in 3 different finishes

Material: Malleable Iron

Finish: Plain, Galvanized & Copper Epoxy

SIZE INCHES	ITEM GALVANIZED	ITEM PLAIN	ITEM COPPER EPOXY	MAX LOAD	WEIGHT LBS	A ROD SIZE	B LENGTH	C WIDTH	D HEIGHT	E LIP	F DISTANCE	SCREW SIZE #	INNER BOX	MASTER BOX	PALLET QTY
1/4"	CLF-G14	CLF-PL14	-	180	0.16	1/4	3-5/16	1 3/8	1/2	3/16	2-1/4	12	20	100	4800
3/8"	CLF-G38	CLF-PL38	CLF-EC38	180	0.16	3/8	3-5/16	1 3/8	1/2	3/16	2-1/4	12	20	100	4800
1/2"	CLF-G12	CLF-PL12	-	180	0.16	1/2	3-5/16	1 3/8	1/2	3/16	2-1/4	12	20	100	4800