

THREADED ROD

Designed for hanging, mounting, supporting, and fastening

- For use in applications such as plumbing, heating, electrical, and construction
- Quick assembly and adjustments
- Customize rod length with a hacksaw or a band saw
- ASTM A307 Grade A carbon steel

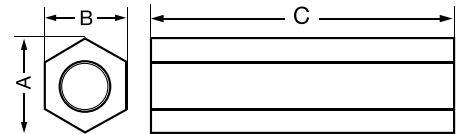
Sizes: 3/8" - 3/4"

Material: Carbon Steel

Finish: Zinc

Approvals: ASTM A307
Grade A carbon steel

SIZE INCHES	ITEM THREADED ROD	LENGTH Inches	TENSILE STRENGTH MPA	COATING THICKNESS Microns	PIECES PER TUBE
3/8" - 16 X 6'	THR-Z3806	72.0	541	9	25
1/2" - 13 X 6'	THR-Z1206	72.0	552	8	12
5/8" - 11 X 6'	THR-Z5806	72.0	563	10	8
3/4" - 10 X 6'	THR-Z3406	72.0	545	10	5
7/8" - 9 X 6'	THR-Z7806	72.0	557	10	4
3/8" - 16 X 10'	THR-Z3810	120.0	541	10	25
1/2" - 13 X 10'	THR-Z1210	120.0	552	8	12
5/8" - 11 X 10'	THR-Z5810	120.0	568	8	8
3/4" - 10 X 10'	THR-Z3410	120.0	545	9	5



ROD COUPLINGS

Designed to connect two lengths of rod with equal diameter

- Intermediate accessory joins 2 lengths of similar threaded rod
- Made of carbon steel and can be welded to the rod after assembly

Sizes: 3/8" - 7/8"

Material: Carbon Steel

Finish: Zinc

SIZE INCHES	ITEM ROD COUPLING	A	B	C	WEIGHT	INNER BOX	MASTER BOX	PALLET QTY
1/4"	CRO-Z14	1/2	7/16	7/8	0.019	80	320	15360
3/8"	CRO-Z38	5/8	9/16	1-1/8	0.019	80	320	15360
1/2"	CRO-Z12	7/8	3/4	1-1/2	0.028	50	200	9600
5/8"	CRO-Z58	1-1/16	15/16	1-7/8	0.100	50	200	4500
3/4"	CRO-Z34	1-1/4	1-1/8	2-1/4	0.160	40	200	4500
7/8"	CRO-Z78	1-1/2	1-5/16	2-5/8	0.290	30	200	4500

REDUCING ROD COUPLINGS

SIZE INCHES	ITEM REDUCING ROD COUPLING	A	B	C	WEIGHT	INNER BOX	MASTER BOX	PALLET QTY
3/8" x 1/4"	CRE-Z3814	7/8	3/4	1-1/2	0.019	80	320	15360
1/2" x 3/8"	CRE-Z1238	1-1/4	1-1/8	2-1/4	0.023	50	200	9600
5/8" x 1/2"	CRE-Z5812	1-1/2	1-5/16	2-5/8	0.049	50	200	4500