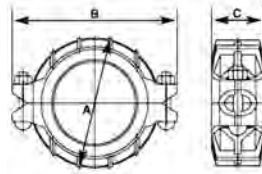


GROOVED FITTINGS

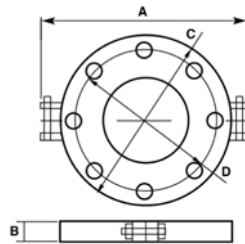
Ductile Iron Conforms to ASTM A 536. Groove Dimension Conforms to AWWA C606. Coatings of Orange Paint or Hot Dipped Galvanized Conforming to ASTM A153. Gasket Grade E EPDM (Green Stripe) -30°F (-34°C) to +230°F (+110°C)

GROOVED REDUCING COUPLING



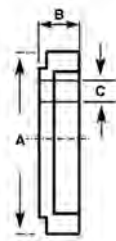
PART #	SIZE	PIPE O.D.	A	B	C	WEIGHT	QTY
1087	2" X 1-1/2"	2.874*1.900	3.976	5.394	1.890	1.96	50
1081	2-1/2" X 2"	2.874*2.375	3.976	5.394	1.890	2.50	32
1084	3" X 2"	3.500*2.375	4.724	6.457	1.890	3.65	24
1082	3" X 2-1/2"	3.500*2.996	4.724	6.457	1.890	3.27	24
1085	4" X 2"	4.500*2.375	5.906	7.677	1.929	4.75	20
1086	4" X 2-1/2"	4.500*2.996	5.906	7.677	1.929	4.55	20
1083	4" X 3"	4.500*3.500	5.906	7.677	1.929	4.16	16

GROOVED FLANGE



PART #	SIZE	PIPE O.D.	A	B	C	D	WEIGHT	QTY
1032	2"	2.375	8.740	0.906	6.496	4.921	3.93	24
1033	2-1/2"	3.000	9.448	0.906	7.283	5.708	5.18	20
1034	3"	3.500	9.921	0.906	7.559	6.299	6.42	15
1036	4"	4.500	9.763	0.906	8.661	7.086	6.58	12
1037	5"	5.500	12.44	0.944	9.842	8.267	8.78	10
1031	6"	6.625	13.622	0.944	11.22	9.448	8.70	8
1035	8"	8.625	16.456	1.102	13.38	11.614	13.74	5
10310	10"	10.750	20.70	1.130	15.63	13.88	18.20	1

GROOVED DRAIN CAP



PART #	SIZE	PIPE O.D.	A	B	C	WEIGHT	QTY
1060D	2"	2.375x1.327	2	0.99	1	0.66	150
1061D	2-1/2"	2.875x1.327	2.50	0.99	1	0.84	150
1062D	3"	3.500x1.327	3	0.99	1	1.43	100
1063D	4"	4.500x1.327	4	0.99	1	2.09	50
1066D	5"	5.500x2.375	5	0.99	1	3.40	36
1064D	6"	6.625x1.327	6	0.99	1	4.85	18

GROOVED CAP



PART #	SIZE	PIPE O.D.	A	B	WEIGHT	QTY
1067	1-1/2"	1.900	1.50	0.88	0.44	200
1060	2"	2.375	2	0.99	0.62	150
1061	2-1/2"	2.875	2.50	0.99	0.86	150
1062	3"	3.500	3	0.99	1.01	100
1063	4"	4.500	4	0.99	1.42	50
1066	5"	5.500	5	0.99	2.80	30
1064	6"	6.625	6	0.99	4.41	18
1065	8"	8.625	8	1.181	9.33	12