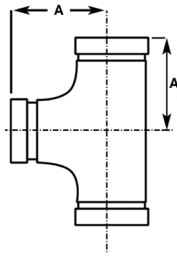


# GROOVED FITTINGS

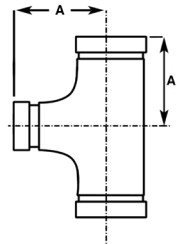
Ductile Iron Conforms to ASTM A 536. Groove Dimension Conforms to AWWA C606. Coatings of Orange Paint or Hot Dipped Galvanized Conforming to ASTM A153. Gasket Grade E EPDM (Green Stripe) -30°F (-34°C) to +230°F (+110°C)

## GROOVED TEE



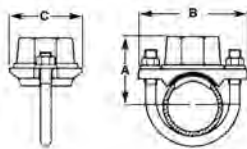
PART #	SIZE	PIPE O.D.	A	WEIGHT	QTY
10502	1-1/4"	1.660	2.755	1.10	60
10501	1-1/2"	1.900	2.755	1.34	60
1050	2"	2.375	3.267	1.98	20
1051	2-1/2"	2.875	3.74	2.82	12
1052	3"	3.500	4.251	3.90	12
1053	4"	4.500	5	5.73	6
1058	5"	5.500	5.511	9.55	2
1054	6"	6.625	6.496	14.13	2
1055	8"	8.625	7.755	27.07	1
10520	10"	10.750	9.015	46.34	1

## GROOVED REDUCING TEE



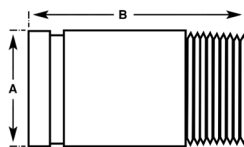
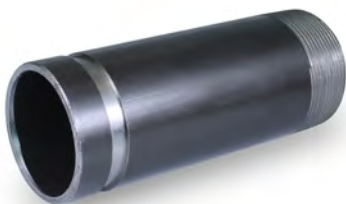
PART #	SIZE	PIPE O.D.	A	WEIGHT	QTY
10511	2" X 1-1/2"	2.875	3.74	1.77	25
10512	2-1/2" X 1-1/2"	2.875	3.74	2.29	20
10513	2-1/2" X 2"	2.875	3.74	2.49	20
10514	3" X 2"	3.500	4.251	3.75	10
10515	3" X 2-1/2"	3.500	4.251	3.85	10
10516	4" X 2"	4.500	5	5.44	5
1059	4" X 2-1/2"	4.500	5	6.17	5
10510	4" X 3"	4.500	5	5.59	5
10517	5" X 2"	5.500	5.511	10.37	3
10524	6" X 2"	6.625	6.496	6.18	4
10523	6" X 2-1/2"	6.625	6.496	13.69	4
1057	6" X 3"	6.625	6.496	13.03	2
10518	6" X 4"	6.625	6.496	12.92	2
10519	6" X 5"	6.625	6.496	16.05	2
1056	8" X 6"	8.625	7.755	25.71	1
10522	10" X 6"	10.750	9.015	61.66	1
10521	10" X 8"	10.750	9.015	62.17	1

## GROOVED STRAP TEE U-BOLT



PART #	SIZE	PIPE O.D.	A	B	C	WEIGHT	QTY
1180	1-1/2" X 1"	1.900x1.327	2.283	3.661	2.323	0.99	96

## GROOVED X THREADED NIPPLE ADAPTER



PART #	SIZE	PIPE O.D.	A	B	WEIGHT	QTY
BNTG1160	1-1/4" X 6" - TXG	1.66	0.63	0.31	0.60	50
BNTG1560	1-1/2" X 6" - TXG	1.90	0.63	0.31	1.60	40
BNTG2060	2" X 6" - TXG	2.38	0.63	0.31	2.30	25
BNTG2560	2-1/2" X 6" - TXG	2.88	0.63	0.31	2.60	18
BNTG3060	3" X 6" - TXG	3.50	0.63	0.31	4.70	12
BNTG4060	4" X 6" - TXG	4.50	0.63	0.37	7.00	8
BNTG5060	5" X 6" - TXG	5.56	0.63	0.37	7.00	4
BNTG6060	6" X 6" - TXG	6.63	0.63	0.37	9.10	2