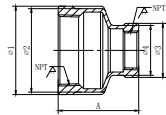


STAINLESS STEEL FITTINGS | 304 & 316

• 304 / 316 Stainless Steel • 150# • Material Test Reports (MTR'S) Available • Stainless Steel Conforms to ASTM A312
 • Dimensions & Ends Conform to ASTM A733 • Threads Conform to ASME B1.20.1 • Meets NSF / ANSI 372

STAINLESS STEEL FITTINGS | 304 & 316

Stainless Steel Reducing Coupling



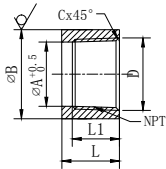
PART #		SIZE	DESCRIPTION	DIMENSIONS (IN)					WEIGHT LBS	PACKAGING	
STAINLESS STEEL 304	STAINLESS STEEL 316			ø1	ø2	ø3	ø4	A		BX	CS
SS4RC0140	SS16RC0140	1/4" X 1/8"	SS Reducing Coupling	0.73	0.61	0.61	0.53	1.06	0.06	50	600
SS4CR0380	SS16CR0380	3/8" X 1/8"	SS Reducing Coupling	0.87	0.77	0.61	0.53	1.57	0.12	35	420
SS4CR0381	SS16CR0381	3/8" X 1/4"	SS Reducing Coupling	0.87	0.77	0.73	0.61	1.57	0.15	30	360
SS4CR0120	SS16CR0120	1/2" X 1/8"	SS Reducing Coupling	1.10	0.98	0.61	0.53	1.69	0.15	75	300
SS4CR0121	SS16CR0121	1/2" X 1/4"	SS Reducing Coupling	1.10	0.98	0.73	0.61	1.69	0.17	75	300
SS4CR0122	SS16CR0122	1/2" X 3/8"	SS Reducing Coupling	1.10	0.98	0.87	0.77	1.69	0.19	60	240
SS4CR0340	SS16CR0340	3/4" X 1/8"	SS Reducing Coupling	1.34	1.22	0.61	0.53	1.73	0.20	70	210
SS4CR0341	SS16CR0341	3/4" X 1/4"	SS Reducing Coupling	1.34	1.22	0.73	0.61	1.73	0.20	45	180
SS4CR0342	SS16CR0342	3/4" X 3/8"	SS Reducing Coupling	1.34	1.22	0.87	0.77	1.73	0.22	45	180
SS4CR0343	SS16CR0343	3/4" X 1/2"	SS Reducing Coupling	1.34	1.22	1.10	0.98	1.73	0.25	60	180
SS4CR1018	-	1" X 1/8"	SS Reducing Coupling	1.77	1.65	0.61	0.55	1.99	0.33	45	135
SS4RC1000	SS16RC1000	1" X 1/4"	SS Reducing Coupling	1.77	1.65	0.79	0.71	1.99	0.33	45	135
SS4RC1001	-	1" X 3/8"	SS Reducing Coupling	1.67	1.56	0.87	0.77	1.89	0.36	30	120
SS4RC1002	SS16RC1002	1" X 1/2"	SS Reducing Coupling	1.67	1.56	1.10	0.98	1.89	0.36	30	120
SS4RC1003	SS16RC1003	1" X 3/4"	SS Reducing Coupling	1.67	1.56	1.34	1.22	1.89	0.39	25	100
SS4RC1139	-	1-1/4" X 1/4"	SS Reducing Coupling	2.07	1.97	0.79	0.71	1.99	0.46	25	75
-	SS16RC1138	1-1/4" X 3/8"	SS Reducing Coupling	2.07	1.97	0.98	0.91	1.97	0.47	25	75
SS4RC1141	SS16RC1141	1-1/4" X 1/2"	SS Reducing Coupling	2.07	1.97	1.18	1.10	1.99	0.48	25	75
SS4RC1142	SS16RC1142	1-1/4" X 3/4"	SS Reducing Coupling	2.01	1.91	1.34	1.22	1.93	0.51	25	75
SS4RC1143	SS16RC1143	1-1/4" X 1"	SS Reducing Coupling	2.01	1.91	1.67	1.56	1.93	0.57	15	60
SS4RC1118	SS16RC1118	1-1/2" X 1/8"	SS Reducing Coupling	2.36	2.24	0.61	0.53	2.30	0.56	30	60
-	SS16CR1119	1-1/2" X 1/4"	SS Reducing Coupling	2.36	2.28	0.79	0.71	2.30	0.57	30	60
SS4RC1120	SS16RC1120	1-1/2" X 3/8"	SS Reducing Coupling	2.36	2.24	0.96	0.91	2.28	0.58	30	60
SS4RC1121	SS16RC1121	1-1/2" X 1/2"	SS Reducing Coupling	2.36	2.24	1.16	1.08	2.28	0.57	20	60
SS4RC1122	SS16RC1122	1-1/2" X 3/4"	SS Reducing Coupling	2.28	2.19	1.34	1.22	2.24	0.63	15	60
SS4RC1123	SS16RC1123	1-1/2" X 1"	SS Reducing Coupling	2.28	2.19	1.67	1.56	2.24	0.66	25	50
SS4RC1124	-	1-1/2" X 1-1/4"	SS Reducing Coupling	2.28	2.19	2.01	1.91	2.24	0.71	12	48
SS4RC2018	-	2" X 1/8"	SS Reducing Coupling	2.89	2.74	0.61	0.55	2.64	0.90	12	36
SS4RC2014	SS16RC2014	2" X 1/4"	SS Reducing Coupling	2.89	2.74	0.79	0.71	2.64	0.90	12	36
SS4RC2000	SS16RC2000	2" X 3/8"	SS Reducing Coupling	2.89	2.74	0.98	0.91	2.68	0.89	12	36
SS4RC2001	SS16RC2001	2" X 1/2"	SS Reducing Coupling	2.89	2.74	1.16	1.10	2.68	0.91	12	36
SS4RC2002	SS16RC2002	2" X 3/4"	SS Reducing Coupling	2.80	2.68	1.34	1.22	2.60	0.92	12	36
SS4RC2003	SS16RC2003	2" X 1"	SS Reducing Coupling	2.80	2.68	1.67	1.56	2.60	0.97	12	36
SS4RC2004	SS16RC2004	2" X 1-1/4"	SS Reducing Coupling	2.80	2.68	2.01	1.91	2.60	1.03	9	27
SS4RC2005	SS16RC2005	2" X 1-1/2"	SS Reducing Coupling	2.80	2.68	2.28	2.19	2.60	1.06	9	27
SS4RC4003	SS16RC4003	4" X 2"	SS Reducing Coupling	5.41	5.20	2.89	2.78	3.74	3.39	3	6
SS4RC4004	-	4" X 2-1/2"	SS Reducing Coupling	5.41	5.20	3.54	3.37	3.74	4.56	3	6
SS4RC4005	SS16RC4005	4" X 3"	SS Reducing Coupling	5.41	5.20	4.29	4.07	3.84	4.84	3	6
SS4RC2120	-	2-1/2" X 1/2"	SS Reducing Coupling	3.52	3.35	1.18	1.08	2.95	1.58	10	20
SS4RC2121	-	2-1/2" X 1"	SS Reducing Coupling	3.52	3.35	1.75	1.63	2.95	1.56	10	20
SS4RC2124	-	2-1/2" X 1-1/2"	SS Reducing Coupling	3.52	3.35	2.34	2.22	2.95	1.69	7	14

STAINLESS STEEL FITTINGS | 304 & 316

- 304 / 316 Stainless Steel • 150# • Material Test Reports (MTR'S) Available • Stainless Steel Conforms to ASTM A312
- Dimensions & Ends Conform to ASTM A733 • Threads Conform to ASME B1.20.1 • Meets NSF / ANSI 372

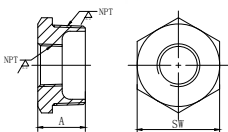
PART #		SIZE	DESCRIPTION	DIMENSIONS (IN)					WEIGHT	PACKAGING	
STAINLESS STEEL 304	STAINLESS STEEL 316			ø1	ø2	ø3	ø4	A	LBS	BX	CS
SS4RC2125	SS16RC2125	2-1/2" X 2"	SS Reducing Coupling	3.52	3.35	2.87	2.72	2.95	1.81	7	14
SS4RC3000	-	3" X 3/4"	SS Reducing Coupling	4.25	4.07	1.42	1.32	3.23	2.56	7	14
SS4RC3001	SS16RC3001	3" X 1"	SS Reducing Coupling	4.25	4.07	1.77	1.65	3.23	2.54	6	12
-	SS16RC3003	3" X 1-1/2"	SS Reducing Coupling	4.25	4.07	2.36	2.24	3.27	2.64	6	12
SS4RC3004	SS16RC3004	3" X 2"	SS Reducing Coupling	4.25	4.07	2.89	2.74	3.09	2.63	6	12
SS4RC3005	SS16RC3005	3" X 2-1/2"	SS Reducing Coupling	4.25	4.07	3.50	3.35	3.23	2.97	5	10
-	SS16RC4000	4" X 1"	SS Reducing Coupling	5.41	5.20	1.75	1.63	3.74	4.42	3	6
SS4RC4002	-	4" X 1-1/2"	SS Reducing Coupling	5.41	5.20	2.38	2.24	3.78	3.09	3	6

Stainless Steel Half Coupling



PART #		SIZE	DESCRIPTION	DIMENSIONS (IN)					WEIGHT	PACKAGING	
STAINLESS STEEL 304	STAINLESS STEEL 316			øA	øB	L	L1	C	LBS	BX	CS
SS4HC0018	SS16HC0180	1/8"	SS Half Coupling	0.33	0.55	0.43	0.31	0.04	0.02	120	1440
SS4HC0140	SS16HC0140	1/4"	SS Half Coupling	0.44	0.73	0.51	0.39	0.05	0.05	80	960
SS4HU0380	SS16HU0380	3/8"	SS Half Coupling	0.56	0.85	0.55	0.43	0.05	0.06	60	720
SS4HC0120	SS16HC0120	1/2"	SS Half Coupling	0.69	1.05	0.71	0.57	0.06	0.10	75	300
SS4HC0340	SS16HC0340	3/4"	SS Half Coupling	0.90	1.25	0.77	0.67	0.06	0.14	40	160
SS4HC1000	SS16HC1000	1"	SS Half Coupling	1.13	1.56	0.83	0.69	0.07	0.22	25	100
SS4HC1140	SS16HC1140	1-1/4"	SS Half Coupling	1.46	1.91	0.94	0.79	0.07	0.32	20	80
SS4HC1120	SS16HC1120	1-1/2"	SS Half Coupling	1.70	2.17	0.94	0.79	0.07	0.38	18	54
SS4HC2000	SS16HC2000	2"	SS Half Coupling	2.17	2.62	1.10	0.85	0.07	0.53	12	36
SS4HC0018	SS16HC0180	1/8"	SS Half Coupling	0.33	0.55	0.43	0.31	0.04	0.02	120	1440
SS4HC0140	SS16HC0140	1/4"	SS Half Coupling	0.44	0.73	0.51	0.39	0.05	0.05	80	960
SS4HU0380	SS16HU0380	3/8"	SS Half Coupling	0.56	0.85	0.55	0.43	0.05	0.06	60	720
SS4HC0120	SS16HC0120	1/2"	SS Half Coupling	0.69	1.05	0.71	0.57	0.06	0.10	75	300

Stainless Steel Bushing



PART #		SIZE	DESCRIPTION	DIMENSIONS (IN)		WEIGHT	PACKAGING	
STAINLESS STEEL 304	STAINLESS STEEL 316			A	SW	LBS	BX	CS
SS4BU0140	SS16BU0140	1/4" X 1/8"	SS Bushing	0.79	0.67	0.04	120	1440
SS4BU0380	SS16BU0380	3/8" X 1/8"	SS Bushing	0.85	0.83	0.07	75	900
SS4BU0381	SS16BU0381	3/8" X 1/4"	SS Bushing	0.85	0.83	0.06	75	900
SS4BU0120	SS16BU0120	1/2" X 1/8"	SS Bushing	0.94	0.96	0.10	150	600
SS4BU0121	SS16BU0121	1/2" X 1/4"	SS Bushing	0.94	0.96	0.10	150	600
SS4BU0122	SS16BU0122	1/2" X 3/8"	SS Bushing	0.94	0.96	0.09	150	600
SS4BU0340	SS16BU0340	3/4" X 1/8"	SS Bushing	0.96	1.18	0.16	75	300
SS4BU0341	SS16BU0341	3/4" X 1/4"	SS Bushing	0.96	1.18	0.16	75	300
SS4BU0342	SS16BU0342	3/4" X 3/8"	SS Bushing	0.96	1.18	0.15	75	300
SS4BU0343	SS16BU0343	3/4" X 1/2"	SS Bushing	0.96	1.18	0.14	75	300