

## PUSH-IN STYLE

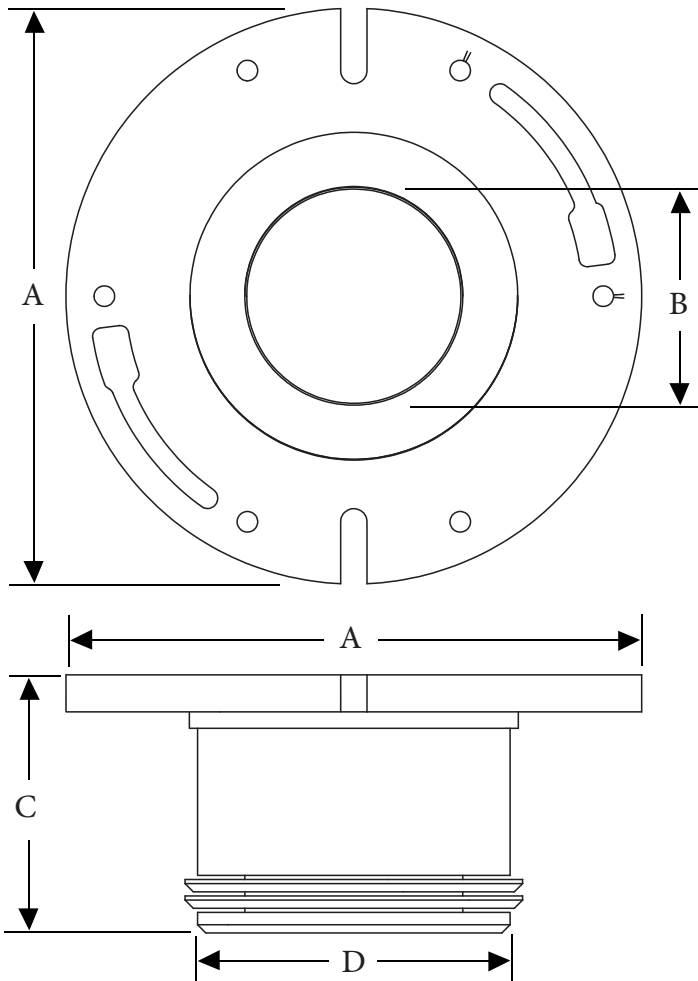
## Features

- Flush Fit
- Positive Seal
- Notched and Slotted
- Seals in Pipe with Up to 4" of Clearance Below the Floor
- Easy to Install or Adjust
- Can be Used on PVC, ABS, Cast Iron Pipe or Old Lead Pipe in Good Condition



## Cast Iron Two Finger Flange

SKU	SIZE	A	B (ID)	C	D (OD)	PIPE SIZE
CR47-320	3" x 2"	7 1/4"	4 1/8"	2"	2 7/8"	3"
CR47-340	3" x 4"	7 1/4"	4 1/8"	4"	2 7/8"	3"
CR47-420	4" x 2"	7 1/4"	4 1/8"	2"	3 3/4"	4"
CR47-430	4" x 3"	7 1/4"	4 1/8"	3"	3 3/4"	4"
CR47-440	4" x 4"	7 1/4"	4 1/8"	4"	3 3/4"	4"
CR47-460	4" x 6"	7 1/4"	4 1/8"	6"	3 3/4"	4"



## SERVICE WEIGHT

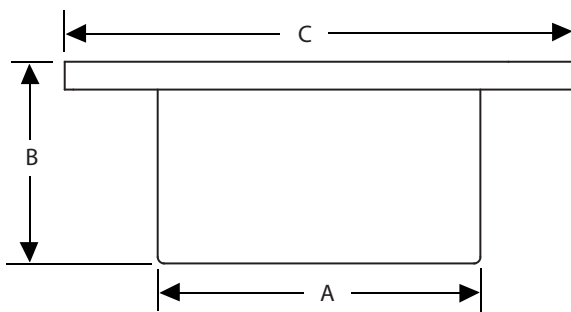
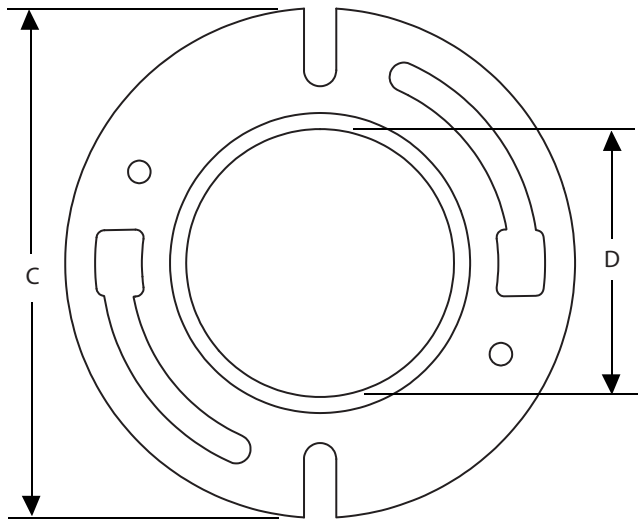
## Features

- Notched and Slotted
- Inside Caulk Connection
- Cast Iron Material



## Inside Caulk Cast Iron Closet Flange

PART #	SIZE	A	B	C	D	PIPE SIZE
CI41-320	3" x 2"	4"	2"	7 1/8"	3 3/4"	3"
CI41-420	4" x 2"	4 5/8"	2"	7"	5 1/4"	4"
CI41-430	4" x 3"	4 5/8"	3"	7"	5 1/4"	4"
CI41-440	4" x 4"	4 5/8"	4"	7"	5 1/4"	4"



## EXTRA HEAVY 5" NO BEAD

### Features

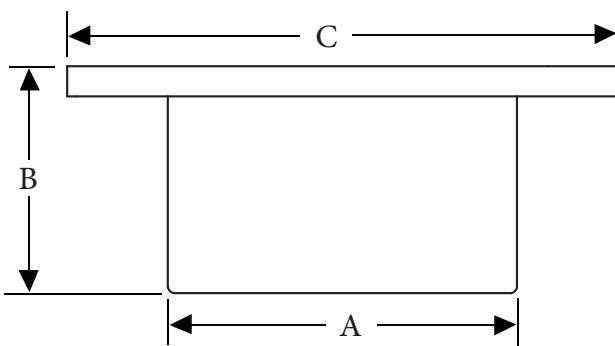
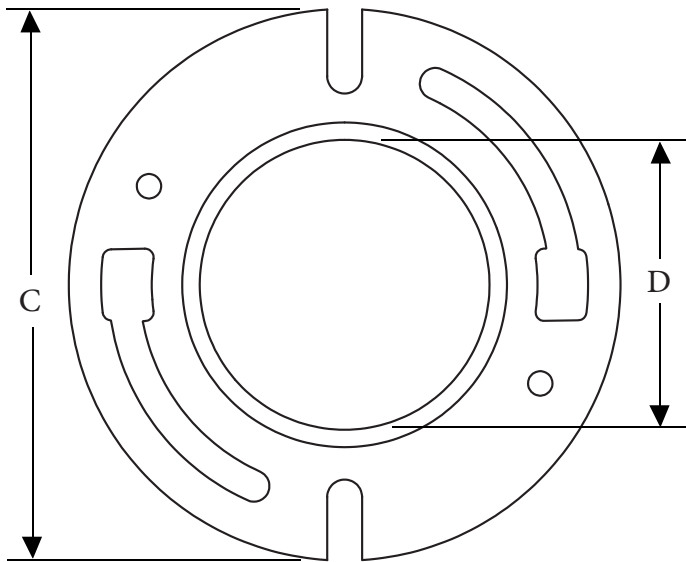
- Cast Iron
- Notched and Slotted
- Inside Caulk Connection



### Extra Heavy Cast Iron Closet Flange

No Bead

PART #	SIZE	A (OD)	A (ID)	B	C	D	PIPE SIZE
<b>CFCX4212</b>	4" x 2 1/2"	5 1/4"	4 7/8"	2 1/2"	7 1/8"	5 1/8"	4"
<b>CFCX0404</b>	4" x 4"	5 1/4"	4 7/8"	4"	7 1/8"	5 1/8"	4"
<b>CFCX0406</b>	4" X 6"	5 1/4"	4 7/8"	6"	7 1/8"	5 1/16"	4"



**FITS 3" PIPE**

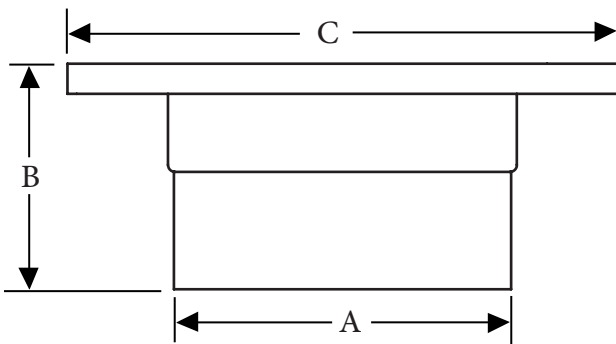
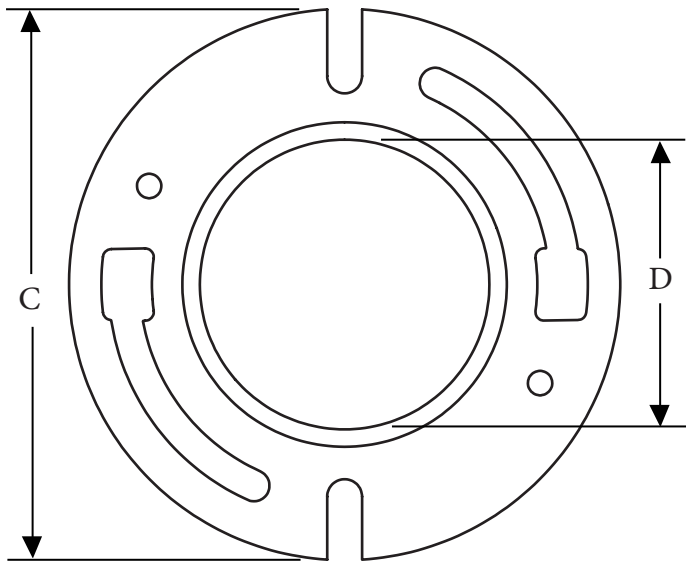
## Features

- Cast Iron
- Notched and Slotted
- Inside Caulk Connection



## Inside Caulk Red. Cast Iron Closet Flange

PART #	SIZE	A	B	C	D	PIPE SIZE
CFCCR0403	4" x 3" x 3"	4-4 3/8"	3-1/2"	7-1/4"	5"	3"



## NO HUB CONNECTION

### Features

- Fits 4 in. pipe
- Cast Iron Construction
- No hub connection
- Notched and Slotted



### No Hub Cast Iron Closet Flange

PART #	SIZE	A1	A2	B	C	D	PIPE SIZE
CFCNH0403	4" x 3-1/2"	4.400	4.00	3.50	7.250	6.150	4"

