



# RM-2 Riser Manifold product family



Fully integrated or standalone solutions for commercial and residential applications



The power behind **your mission**

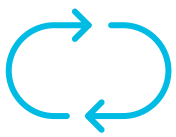




## Get more from your Riser Manifold More flexibility. More efficiency. More options.

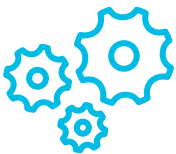
The Tyco® RM-2 Riser Manifold offering includes cost-effective, dependable manifold options for both commercial and residential applications. The TD-2 test and drain valve achieves a tight seal using a plunger-type valve and all Riser Manifold models are pre-assembled and tested for quick installation.

### Features and benefits of the RM-2 Riser Manifold:



#### Flexible

- Rotate RM-2 components at coupling connections to fit installation
- Variety of models to fit your application
- Horizontal or vertical installation



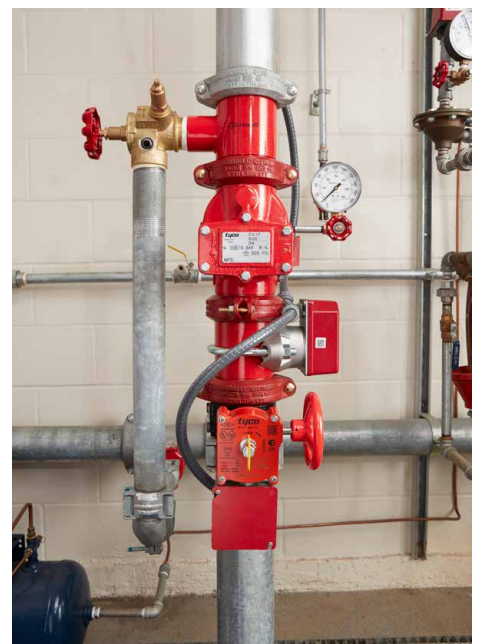
#### Efficient

- Pre-assembled, pre-tested and ready for install
- TD-2 test and drain features integrated pressure relief valve



#### Durable

- Globe-style TD-2 enables the ultimate sealing design
- UL and UL-C Listed, assembled with FM Approved components, and listed by the California State Fire Marshall





## Meet the RM-2 Riser Manifold family



### 1. Commercial RM-2 Riser Manifold with TD-2 test and drain valve

The fully integrated RM-2 includes: TD-2 test and drain valve, CV-1 check valve, flow switch and BFV-300 butterfly valve.

**Approvals:** cULus Listed, assembled with FM approved components, and listed by the California State Fire Marshall



### 2. Commercial RM-2 Base with TD-2 test and drain valve

The commercial RM-2 Base model includes the starting essentials: the TD-2 test and drain valve and a flow switch.

**Approvals:** cULus Listed, FM Approved and listed by the California State Fire Marshall



### 3. Residential RM-2 Base with either TD-2 or ball drain valve

The residential RM-2 Base comes with a flow switch and either a TD-2 test and drain valve or a drain-only valve for NFPA 13R applications.

**Approvals:** cULus Listed and listed by the California State Fire Marshall

#### Available models

Product Name	Applications	Drain	Sizes	Connections*
RM-2	Commercial, NFPA 13 & 13D	TD-2 test and drain valve	2" (DN50) - 6" (DN150)	GxG
RM-2 Base	Commercial, NFPA 13 & 13D	TD-2 test and drain valve	2" (DN50) - 8" (DN200)	GxG
RM-2 Base	Residential, NFPA 13 & 13D	TD-2 test and drain valve	1-1/4" (DN32), 1-1/2" (DN40)	GxG, MNPT
RM-2 Base	Residential, NFPA 13R	Drain only (ball valve)	1" (DN25) - 1-1/2" (DN40)	GxG, MNPT

\*Specific connections may vary depending on size – see the technical data sheet for details.



#### About Johnson Controls

At Johnson Controls (NYSE:JCI), we transform the environments where people live, work, learn and play. As the global leader in smart, healthy and sustainable buildings, our mission is to reimagine the performance of buildings to serve people, places and the planet. With a history of more than 135 years of innovation, Johnson Controls delivers the blueprint of the future for industries such as healthcare, schools, data centers, airports, stadiums, manufacturing and beyond through its comprehensive digital offering OpenBlue. With a global team of 100,000 experts in more than 150 countries, Johnson Controls offers the world's largest portfolio of building technology, software as well as service solutions with some of the most trusted names in the industry.

Visit [www.johnsoncontrols.com](http://www.johnsoncontrols.com) or follow us [@johnsoncontrols](https://twitter.com/johnsoncontrols) on Twitter for more information.

#### North America

Johnson Controls  
1441 Elmwood Ave.  
Cranston, RI 02910

#### Europe

Kopersteden 1  
Enschede, Overijssel 7547 TJ  
The Netherlands  
+31 (0) 53 428 4444

#### Asia Pacific

2 Serangoon North Avenue 5  
#07-01  
Singapore 554911  
+65 6577 4360

#### Middle East

Internet City, Office Park Building Block D,  
Floor 3  
Dubai, United Arab Emirates  
+971 4455 0700

The power behind **your mission**

