

**Features:**

**G0027770**

- Vitreous China
- Low consumption 1.0 gpf (3.8 Lpf)
- ADA compliant
- Integral Flush Spreader
- Extended Shields
- Top spud 1" x 3/4" for Exposed Flushometer
- 2" Outlet spud NPT G0099160 Included
- Dual Wall Hanger G0099290 Included
- Flushometer Valve not Included
- Toilet seat not Included



**Technical Information:**

Configuration	Wall-mount
Water per Flush	1.0 gpf (3.8 Lpf)
Height	26 1/2"
Width	17 1/2"
Depth	14 1/8"
Inlet	3/4"
Outlet	2"
Shipping weight	52 lbs

**Accessories:** (To Be Purchased Separately)

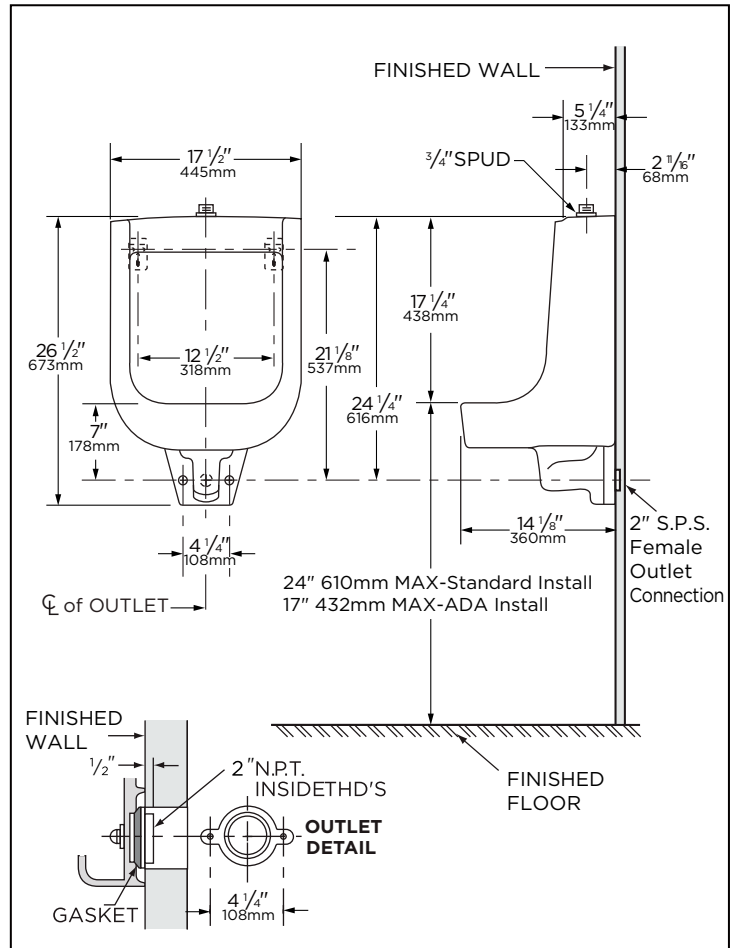
N/A

**Available Colors:**

- White Only
- Other: Refer to Price Book for additional colors/finishes

**Warranty:**

- Limited Lifetime on Vitreous China, refer to the website for more details.



**NOTES:** All dimensions are in inches and millimeter. Illustrations may not be drawn to scale.  
 Use flush valve MFR'S recommended rough-in.  
 Recommended static water pressure for plumbing fixtures is 20-80 psi static per ASME standards A112.19.2 Appendix B.

**IMPORTANT:**  
 Dimensions of fixtures are nominal and may vary within the range of tolerances established by ASME standard A 112.19.2

**PLUMBERS NOTE:** Provide suitable reinforcement for all wall supports.

**THIS FIXTURE QUALIFIES ACCORDING TO ASME TEST PROCEDURES AS A LOW CONSUMPTION URINAL WITH AN AVERAGE CONSUMPTION OF 1.0 gpf (3.8 Lpf) OR LESS**