

INSTALLATION INSTRUCTIONS

HEAVYWEIGHT Coupling



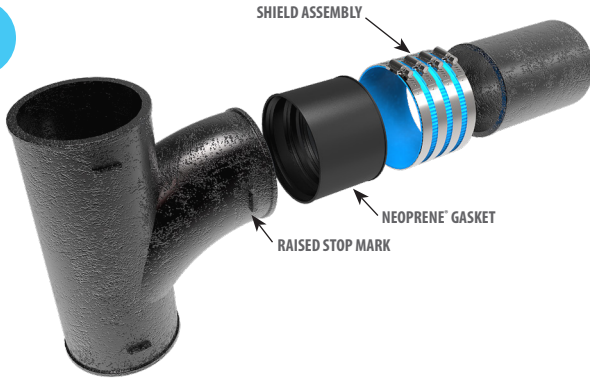
HW

HEAVY DUTY COUPLING



For heavy-duty installations requiring more than a standard No Hub coupling.

1



Ends of cut pipe must be smooth and square.

2



Place Neoprene® gasket on no hub cast iron pipe or fitting. Place stainless steel shield assembly over the end of other pipe.

3



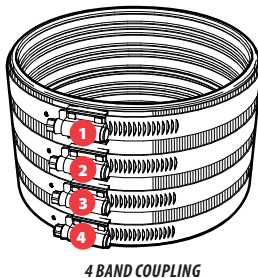
Butt ends of no hub cast iron pipe or fitting together inside the gasket until both are firmly seated against the center stop of gasket. Center the stainless steel shield assembly over the gasket.

NOTE: Clamp housing should NOT be positioned on raised stop marks or lettering.

TIGHTENING GUIDELINES:

4 Band Coupling:

1. Take the slack out of each clamp by hand tightening inner bands 2 and 3.
2. Take the slack out of each clamp by hand tightening outer bands 1 and 4.
3. Using the manufacturer's recommended calibrated torque wrench (Seekonk NC-80), tighten clamps alternately and firmly to 80 in./lbs. of torque, as in steps 1. and 2. above.



NOTE: When power tools are used to install HeavyWeight Couplings they should be adjusted or calibrated to torque only to 80 in./lbs.

4

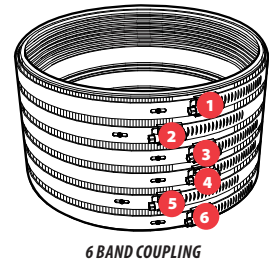


Tightening Guidelines: (see 4 Band and 6 Band below)

TIGHTENING GUIDELINES:

6 Band Coupling:

1. Take the slack out of each clamp by hand tightening inner bands 3 and 4.
2. Take the slack out of each clamp by hand tightening inner bands 2 and 5.
3. Take the slack out of each clamp by hand tightening outer bands 1 and 6.
4. Using the manufacturer's recommended calibrated torque wrench (Seekonk NC-80), tighten clamps alternately and firmly to 80 in./lbs. of torque, as in steps 1., 2. and 3. above.



Mission Rubber Company LLC | 1660 Leeson Lane | Corona, CA 92879
USA toll free 800.854.9991 fax 800.637.4601

missionrubber.com

REV.1/24



MISSION
RUBBER COMPANY LLC

connected, for good™