

15.24



MUELLER® METER BARS (WITH & WITHOUT VALVES) -TOP INLET, TOP OUTLET

Rev. 6-10 Shaded area indicates changes



B-22
MUELLER METER BAR
Sleeve Inlet, Sleeve Outlet

	Catalog Numbers				
	702281	702279	700298	700279	702282
Swivel/Meter Hub Center-to-Center	6"	10"	10"	11"	11"
Swivel Tap or Meter Nut	3/4"	1-1/4"	1-1/2"	1/2"	3/4"
Body	Black	Black	Black	Black	Black
Inlet Size	1"	1-1/2"	2"	3/4"	1"
Outlet Size	1"	1-1/2"	2"	3/4"	1"
Box Quantity	5	3	3	12	12



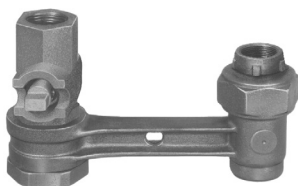
BA-22-MO
MUELLER METER BAR
Sleeve Inlet, FIP Wedge-seal® Insulated Union† Top Outlet with O-Ring

	Catalog Number
	701251
Swivel/Meter Hub Center-to-Center	6"
Swivel Tap or Meter Nut	3/4"
Body	Black
Inlet Size	1"
Outlet Size	1"



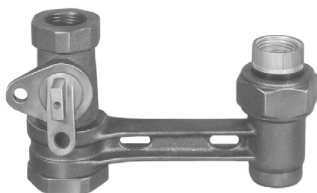
BA-22-M
MUELLER METER BAR
Sleeve Inlet, FIP Wedge-seal® Insulated Union† Top Outlet with Flat Gasket

	Catalog Number
	701250
Swivel/Meter Hub Center-to-Center	6"
Swivel Tap or Meter Nut	3/4"
Body	Black
Inlet Size	1"
Outlet Size	1"
Box Quantity	15



BA-22-SS
MUELLER METER BAR
Sleeve Inlet with 1" Shur-Stop™ Direct Top Inlet, FIP Standard Union Outlet with Flat Gasket

	Catalog Number
	701325
Swivel Center-to-Center	6"
Swivel Tap or Meter Nut	3/4"
Body	Black
Inlet Size	1"
Outlet Size	1"
Box Quantity	10



BA-22-LTMO
MUELLER METER BAR
Sleeve Inlet with 3/4" Valve Direct Top Inlet, FIP Wedge-seal® Insulated Union† Top Outlet with O-Ring

	Catalog Numbers	
	701319	701321
Swivel Center-to-Center	6"	6"
Swivel Tap or Meter Nut	3/4"	3/4"
Body	Black	Black
Inlet Size	1"	1"
Outlet Size	1"	1" male
Box Quantity		

† Tailpiece of Wedge-seal® insulated union is brass. A 3/4" female NPT tailpiece is available in zinc plated steel.