

HEX NUTS

Designed for use along with hex bolts

- Standard hexagon nuts are stocked in sizes 3/8" - 7/8"
- Use with bolts of the same finish and threading for proper fit
- For general applications

Sizes: 3/8" - 7/8"

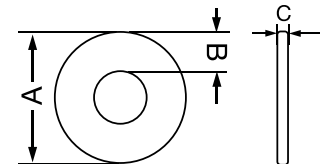
Material: Carbon Steel

Finish: Zinc

SIZE INCHES	ITEM HEX NUTS	A	B	C	WEIGHT	INNER BOX	MASTER BOX	PALLET QTY
1/4"	NHS-Z14	1/2	7/16	7/32	0.003	100	2400	115200
3/8"	NHS-Z38	5/8	9/16	5/16	0.007	100	2400	115200
1/2"	NHS-Z12	7/8	3/4	7/16	0.017	50	400	19200
5/8"	NHS-Z58	1-1/16	15/16	9/16	0.033	50	200	9600
3/4"	NHS-Z34	1-1/4	1-1/8	5/8	0.054	50	150	7200
7/8"	NHS-Z78	1-1/2	1-5/16	3/4	0.086	50	150	7200

HEAVY HEX NUTS

SIZE INCHES	ITEM HEX NUTS	A	B	C	WEIGHT	INNER BOX	MASTER BOX	PALLET QTY
1/4"	NHH-Z14	9/16	1/2	1/4	0.006	100	2400	115200
3/8"	NHH-Z38	25/32	11/16	3/8	0.015	100	2400	115200
1/2"	NHH-Z12	1	7/8	1/2	0.030	50	600	28800
5/8"	NHH-Z58	1-3/16	1-1/16	5/8	0.055	50	400	19200
3/4"	NHH-Z34	1-3/8	1-1/4	3/4	0.088	50	200	9600



USS FLAT WASHERS

Designed for use along with heavy hex bolts

- Larger surface area than standard flat washers
- Prevents a nut, bolt or screw from pulling through the material

Sizes: 3/8" x 1-1/4" & 1/2" x 1-1/4"

Material: Carbon Steel

Finish: Zinc

SIZE INCHES	ITEM HEX NUTS	A	B	C	WEIGHT	INNER BOX	MASTER BOX	PALLET QTY
1/4"	WFE-Z14	3/4	7/32	1/16	0.003	100	2400	115200
3/8"	WFE-Z38	1	9/32	3/32	0.005	100	2400	115200
1/2"	WFE-Z12	1-3/8	13/32	3/32	0.015	100	2400	115200
5/8"	WFE-Z58	1-3/4	17/32	1/8	0.036	100	2400	115200
3/4"	WFE-Z34	2	19/32	5/32	0.050	100	2400	115200

FENDER WASHERS

SIZE INCHES	ITEM HEX NUTS	A	B	C	WEIGHT	INNER BOX	MASTER BOX	PALLET QTY
1/4" x 1-1/4"	WAS-Z14	1-1/4	1/2	1/16	0.010	100	1200	57600
3/8" x 1-1/4"	WAS-Z38	1-1/4	7/16	3/32	0.009	100	1200	57600
1/2" x 1-1/4"	WAS-Z12	1-1/4	3/8	3/32	0.008	100	1200	57600
5/8" x 1-1/4"	WAS-Z58	1-1/4	5/16	1/8	0.007	100	1200	57600