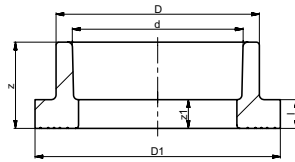


**aquatherm FLANGE ADAPTER (SOCKET)**

Socket fused. Gasket not included. All sizes are compatible with butterfly valves. Minimum 1/8" thickness gasket recommended.



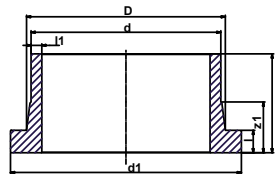
New Part no.	Old Part no.	Dimension (ND — OD)	d	z	z1	D	D1	l	Weight
			[in]	[in]	[in]	[in]	[in]	[in]	[in]
1020032910	0115512	1" — 32 mm	1.26	1.34	0.63	1.61	2.68	0.39	0.12
1020040911	0115514	1 ¼" — 40 mm	1.57	1.40	0.59	1.97	3.07	0.43	0.16
1020050912	0115516	1 ½" — 50 mm	1.97	1.56	0.63	2.40	3.46	0.47	0.16
1020063913	0115518	2" — 63 mm	2.48	1.71	0.63	2.99	4.02	0.55	0.25
1020075914	0115520	2 ½" — 75 mm	2.95	1.81	0.63	3.54	4.80	0.63	0.37
1020090915	0115522	3" — 90 mm	3.54	1.97	0.67	4.25	5.43	0.67	0.58
1020110916	0115524	3 ½" — 110 mm	4.32	2.19	0.73	5.16	6.22	0.73	0.73
1020125917	0115526 <sup>a</sup>	4" — 125 mm	3.54	7.95	0.73	4.92	6.22	0.74	2.78

<sup>a</sup> Part no. 0115526 may be butt-fused or paired with a coupling (part no. 0111026, sold separately). Butt-fusion to SDR 17.6 pipe requires machining of the flange adapter—contact Aquatherm for pricing and delivery.

**aquatherm FLANGE ADAPTER (BUTT-FUSION)**

Butt fused. Gasket not included. Minimum 1/8" thickness gasket recommended.

**Note: The length of some fittings may not accommodate all butt-fusion equipment. Verify the equipment to be used is compatible with the fittings when ordering.**



SDR	New Part no. for butterfly valve	Old Part no. for butterfly valve	Dimension (ND — OD)	d	l	z	D	d1	l1	z1	Weight
				[in]	[in]	[in]	[in]	[in]	[in]	[in]	[in]
17.6	9792915530	2915530BV	6" — 160 mm	6.30	1.06	3.90	6.89	8.35	0.36	2.17	1.81
	9792915534	2915534BV	8" — 200 mm	7.87	1.26	5.12	9.13	10.6	0.45	2.83	4.08
	9792915538	2915538BV	10" — 250 mm	9.84	1.38	5.12	11.2	12.6	0.48	2.95	6.03
	9792915542	2915542BV	12" — 315 mm	12.4	0.98	6.61	13.2	14.6	0.70	3.23	9.92
	9792915544	2915544BV	14" — 355 mm	14.0	1.18	7.24	14.7	16.9	0.79	3.58	14.3
	9792915546	2915546BV	16" — 400 mm	15.8	1.30	7.68	16.8	19.0	0.89	3.82	18.7
	9792915548	2915548BV	18" — 450 mm	17.7	1.81	5.59	18.3	20.8	1.00	3.23	26.5
	9792915550	2915550BV	20" — 500 mm	19.7	1.81	5.43	20.9	23.0	1.12	3.07	21.6
9792915554	2915554BV	24" — 630 mm	24.8	1.97	5.51	25.3	27.0	1.41	3.15	27.8	
11	9790115531	0115531BV	6" — 160 mm	6.30	1.06	3.82	6.81	8.35	0.57	2.17	2.10
	9790115631	0115531LBBV <sup>b</sup>	6" — 160 mm	6.30	1.06	15.8	6.81	8.35	0.57	2.17	6.41
	9790115731	0115531LGBV <sup>b</sup>	6" — 160 mm	6.30	1.06	15.8	6.81	8.35	0.57	2.17	6.62
	9790115535	0115535BV	8" — 200 mm	7.87	1.26	5.12	9.13	10.6	0.72	2.83	4.31
	9790115539	0115539BV	10" — 250 mm	9.84	1.38	5.12	11.2	12.6	0.89	2.95	5.99
	9790115543	0115543BV	12" — 315 mm	12.4	1.38	6.61	13.2	14.6	1.13	3.23	12.5
	9790115545	0115545BV	14" — 355 mm	14.0	1.57	7.09	14.7	16.9	1.27	3.54	19.8
	9790115547	0115547BV	16" — 400 mm	15.8	1.81	7.68	16.8	19.0	1.43	3.94	26.5
9790115549	0115549BV	18" — 450 mm	17.7	2.36	5.47	18.3	20.8	1.61	3.11	36.4	
9	9790315530	0315530BV	6" — 160 mm	6.30	0.98	3.66	6.89	8.35	0.70	2.09	2.53
	9790315534	0315534BV	8" — 200 mm	7.87	1.26	5.12	9.13	10.6	0.88	2.83	5.05
	9790315538	0315538BV	10" — 250 mm	9.84	1.38	5.12	11.2	12.6	1.10	2.95	7.30
	9790315542	0315542BV	12" — 315 mm	12.4	2.05	6.79	13.3	14.6	3.35	3.35	12.4
	9790315544	0315544BV	14" — 355 mm	14.0	3.03	8.54	14.8	17.0	1.56	5.00	31.6
7.4	9790115530	0115530BV	6" — 160 mm	6.30	1.00	3.63	6.89	8.38	0.86	2.09	2.56
	9790115630	0115530LBV <sup>b</sup>	6" — 160 mm	6.30	1.00	15.6	6.89	8.38	0.86	2.09	9.11
	9790115534	0115534BV	8" — 200 mm	7.87	1.26	5.12	9.13	10.6	1.08	2.83	5.05
	9790115538	0115538BV	10" — 250 mm	9.84	1.38	5.12	11.2	12.6	1.35	2.95	7.27

<sup>a</sup> Includes 1-ft extension of **aquatherm green pipe**®.

<sup>b</sup> Includes 1-ft extension of **aquatherm blue pipe**®.