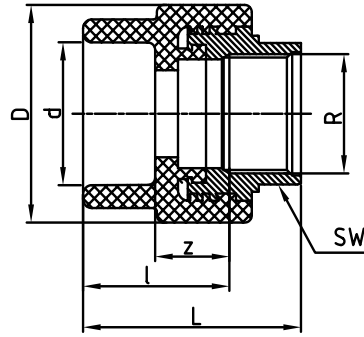


# PRODUCT RANGE - TRANSITION FITTINGS

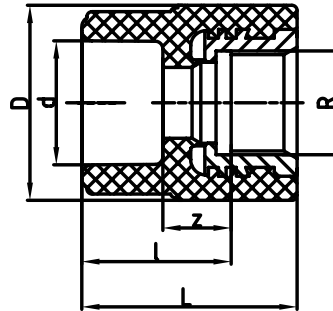
## aquatherm NPT TRANSITION PIECE (female)

With hex-shaped threaded transition.



New Part No. (NPT) Zero-lead (potable) brass	Old Part No. (NPT) Zero-lead (potable) brass	New Part No. (ISO)Stainless steel	Old Part No. (ISO) Stainless steel	Dimension PP-R (ND — OD) x thread	d	R	l	z	D	L	SW	Weight [lb]
					[in]	[in]	[in]	[in]	[in]	[in]	[in]	
1070020915	0621108	-	-	(½" — 20 mm) x ½" F	0.79	0.50	1.36	0.79	1.48	1.99	0.94	0.17
1070020916	0621110	-	-	(½" — 20 mm) x ¾" F	0.79	0.75	1.14	0.57	1.71	1.97	1.22	0.25
1070025917	0621111	-	-	(¾" — 25 mm) x ½" F	0.98	0.50	1.42	0.79	1.48	2.05	0.94	0.20
1070025918	0621112	-	-	(¾" — 25 mm) x ¾" F	0.98	0.75	1.14	0.51	1.71	1.97	1.22	0.24
1070032919	0621113	-	-	(1" — 32 mm) x ¾" F	1.26	0.75	1.26	0.55	1.71	2.09	1.22	0.25
(NPT)												
1070032920	0621114	1070032968	1121114	(1" — 32 mm) x 1" F	1.26	1.00	1.48	0.77	2.36	2.34	1.54	0.53
1070040921	0621115	1070040969	1121115	(1 ¼" — 40 mm) x 1" F	1.57	1.00	1.57	0.77	2.36	2.44	1.54	0.50
1070040922	0621116	-	1121116	(1 ¼" — 40 mm) x 1 ¼" F	1.57	1.25	1.57	0.77	2.91	2.48	1.97	0.85
1070050923	0621117	1070050970	1121117	(1 ½" — 50 mm) x 1 ¼" F	1.97	1.25	1.69	0.77	2.91	2.60	1.97	0.89
1070050924	0621118	1070050971	1121118	(1 ½" — 50 mm) x 1 ½" F	1.97	1.50	1.77	0.85	3.37	2.64	2.17	0.92
1070063925	0621119	1070063972	1121119	(2" — 63 mm) x 1 ½" F	2.48	1.50	2.03	0.94	3.31	2.89	2.17	0.97
1070063926	0621120	1070063973	1121120	(2" — 63 mm) x 2" F	2.48	2.00	2.01	0.93	3.98	3.03	2.64	1.32
1070075927	0621122	-	-	(2 ½" — 75 mm) x 2" F	2.95	2.00	2.01	0.83	3.94	3.03	2.64	1.34

## aquatherm TRANSITION PIECE round (female)



New Part No. (NPT) Zero-lead (potable) brass	Old Part No. (NPT) Zero-lead (potable) brass	New Part No. (ISO)Stainless steel	Old Part No. (ISO) Stainless steel	Dimension PP-R (ND — OD) x thread	d	R	l	z	D	L	Weight [lb]
					[in]	[in]	[in]	[in]	[in]	[in]	
1070020910	0621008	1070020060	0921008	(½" — 20 mm) x ½" F	0.79	0.50	1.08	0.51	1.48	1.59	0.14
1070020911	0621010	1070020061	0921010	(½" — 20 mm) x ¾" F	0.79	0.75	1.08	0.51	1.71	1.59	0.20
1070025912	0621011	1070025062	0921011	(¾" — 25 mm) x ½" F	0.98	0.50	1.59	0.51	1.48	1.65	0.14
1070025913	0621012	1070025063	0921012	(¾" — 25 mm) x ¾" F	0.98	0.75	1.08	0.45	1.71	1.59	0.19
1070032914	0621013	1070032064	0921013	(1" — 32 mm) x ¾" F	1.26	0.75	1.20	0.49	1.71	1.71	0.20