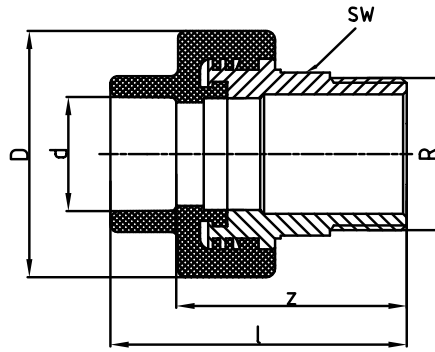


PRODUCT RANGE - TRANSITION FITTINGS

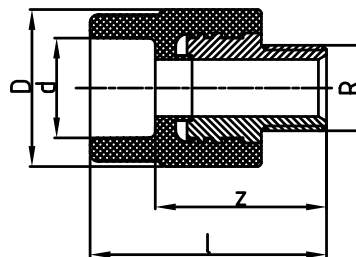
aquatherm NPT TRANSITION PIECE (male)

With hex-shaped threaded transition.



New Part No. (NPT) Zero-lead (potable) brass	Old Part No. (NPT) Zero-lead (potable) brass	Dimension PP-R (ND — OD) x thread	d	R	l	z	D	SW	Weight
			[in]	[in]	[in]	[in]	[in]	[in]	[lb]
1070020833	0621308	(½" — 20 mm) x ½" M	0.79	0.50	2.62	2.05	1.52	0.87	0.23
1070020834	0621310	(½" — 20 mm) x ¾" M	0.79	0.75	2.66	2.09	1.52	0.94	0.28
1070025835	0621312	(¾" — 25 mm) x ¾" M	0.98	0.75	2.66	2.03	1.52	0.94	0.23
1070032936	0621314	(1" — 32 mm) x 1" M	1.26	1.00	3.09	2.38	2.09	1.18	0.48
1070032837	0621316	(1" — 32 mm) x 1 ¼" M	1.26	1.25	3.19	2.48	2.68	1.61	0.70
1070040938	0621317	(1 ¼" — 40 mm) x 1" M	1.57	1.00	3.19	2.38	2.05	1.18	0.49
1070040939	0621318	(1 ¼" — 40 mm) x 1 ¼" M	1.57	1.25	3.33	2.52	2.68	1.61	0.71
1070050940	0621319	(1 ½" — 50 mm) x 1 ¼" M	1.97	1.25	3.37	2.44	2.68	1.61	0.77
1070050941	0621320	(1 ½" — 50 mm) x 1 ½" M	1.97	1.50	3.48	2.56	2.91	1.81	0.94
1070063942	0621321	(2" — 63 mm) x 1 ½" M	2.48	1.50	3.72	2.64	2.85	1.81	1.03
1070063943	0621322	(2" — 63 mm) x 2" M	2.48	2.00	4.04	2.95	3.31	1.97	1.51
1070075944	0621323	(2 ½" — 75 mm) x 2" M	2.95	2.00	4.02	2.83	3.31	1.97	1.61
1070075945	0621324	(2 ½" — 75 mm) x 2 ½" M	2.95	2.50	4.13	2.95	3.94	2.56	2.14
1070090946	0621325	(3" — 90 mm) x 3" M	3.54	3.00	4.76	3.46	4.72	3.35	2.92
1070110947	0621327	(3 ½" — 110 mm) x 4" M	4.33	4.00	5.83	4.37	5.79	4.13	6.02

aquatherm TRANSITION PIECE round (male)



New Part No. (NPT) Zero-lead (potable) brass	Old Part No. (NPT) Zero-lead (potable) brass	New Part No. (ISO)Stainless steel	Old Part No. (ISO) Stainless steel	Dimension PP-R (ND — OD) x thread	d	R	l	z	D	Weight
					[in]	[in]	[in]	[in]	[in]	[lb]
1070020928	0621208	1070020074	0921208	(½" — 20 mm) x ½" M	0.79	0.50	2.22	1.65	1.52	0.19
1070020929	0621210	1070020075	0921210	(½" — 20 mm) x ¾" M	0.79	0.75	2.26	1.69	1.52	0.24
1070025930	0621211	1070025076	0921211	(¾" — 25 mm) x ½" M	0.98	0.50	2.28	1.65	1.52	0.22
1070025931	0621212	1070025077	0921212	(¾" — 25 mm) x ¾" M	0.98	0.75	2.26	1.63	1.52	0.20
1070032932	0621213	1070032078	0921213	(1" — 32 mm) x ¾" M	1.26	0.75	2.34	1.63	1.69	0.25