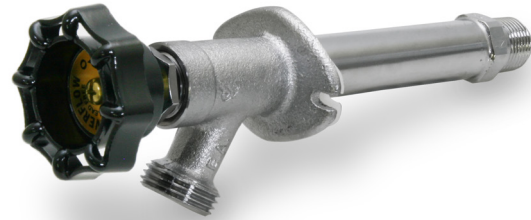


3/4" HOSE X 1/2" MIP & SWEAT • LEAD FREE

Features

- Lead-free design suitable for potable water
- Chrome-plated body offers superior corrosion resistance
- Extended-hub handwheel moves the operator's hands away from the sharp hose bibb threads
- Features tapered sill wedge, to ease installation onto a variety of sill types



Specifications & Approvals

Working Pressure, Non-Shock (PSI):
CWP: 125 PSI WSP: Not suitable for steam service

- Truesdail Labs certified to NSF/ANSI Standard 61/9 Annex F and Annex G. Meets NSF/ANSI 372
- Certified to A.S.S.E Standard 1019, Type A
- UPC/IAPMO & CSA certified
- Manufactured in an ISO accredited facility



Dimensions

Part #	Size	L
6204-NL	4"	8.6
6206-NL	6"	10.6
6208-NL	8"	12.6
6210-NL	10"	14.6
6212-NL	12"	16.6
6214-NL	14"	18.6

Material Specifications

Part Name	Material
15. Siding wedge	LDPE
14. Packing screw	B134-C27000
13. Seat packing	NBR
12. Ed seat	No lead brass
11. Piston	No lead brass
10. Stem	B135-C27000
9. Tube	B135-C26000
8. Body	No lead brass
7. Stop washer	304 Stainless
6. Stem packing	NBR
5. Washer	304 Stainless
4. Stam gland screw	B16-C36000
3. Hand wheel	ZDC / ABS
2. Name plate	B209-1100
1. Handle screw	B134-C27000

