

**FOR HORIZONTAL INSTALLATION • LEAD FREE**

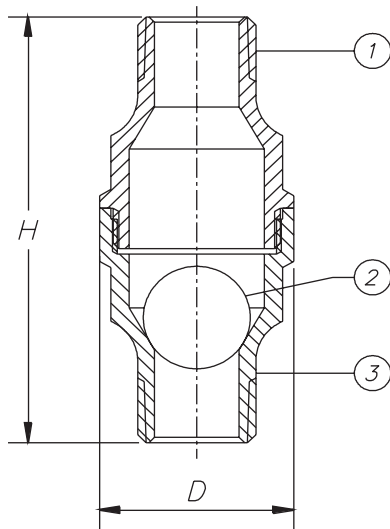
**Ball Drip Valves** feature a two piece brass construction. Their designed to prevent moisture accumulation on the “dry” side of Fire Department Connections when used in conjunction with an approved check valve. When Installed the ball in the lower area of the valve body allowing for proper drainage of moisture accumulation. Upon system pressurization, the ball is pushed into the small end of the body closing the opening. When system pressure is removed, the ball returns to its original position. Designed for horizontal installation only.

**Features**

- Lead free brass
- Two piece
- Solid brass ball
- NPT threads
- For horizontal use only

**Specifications & Approvals**

Conforms to ANSI / ASME B1.20.1



**Dimensions**

Part#	Size	H	D
681T012-NL	1/2"	3.09	1.36
681T034-NL	3/4"	3.09	1.36

**Material Specifications**

Part Name	Material
<b>Bonnet</b>	Brass C46400
<b>Ball</b>	Brass C46400
<b>Body</b>	Brass C46400