

Features

- Lead Free

Specifications & Approvals

Acudel 22000 (PPSU) by injection molding
 Working Pressure: 100 PSI
 Working Temperature: 180°F
 Conforms to ASTM F2159 & F877, CSA B137.5,
 ANSI/NSF 61



PEX Manifolds Close End

Part #	Size
PMC2-3412	3/4" X 3/4" X1/2" - 2 Ports
PMC3-3412	3/4" X 3/4" X1/2" - 3 Ports
PMC4-3412	3/4" X 3/4" X1/2" - 4 Ports
PMC6-112	1" X 1" X1/2" - 6 Ports

PEX Manifolds Open End

Part #	Size
PMO2-3412	3/4" X 3/4" X1/2" - 2 Ports
PMO3-3412	3/4" X 3/4" X1/2" - 3 Ports
PMO4-3412	3/4" X 3/4" X1/2" - 4 Ports
PMO6-3412	3/4" X 3/4" X1/2" - 6 Ports

Property	ASTM Test Method	US Customary Units		SI Units	
		Value	Units	Value	Units
Mechanical					
Tensile Strength	D 638	11.2	kpsi	77	MPa
Tensile Modulus	D 638	387	kpsi	2.67	GPa
Tensile Elongation at Yield	D 638	6.7	%	6.7	%
Tensile Elongation at Break	D 638	50	%	50	%
Flexural Strength	D 790	15.7	kpsi	108	MPa
Flexural Modulus	D 790	402	kpsi	2.77	GPa
Tensile Impact Strength	D 1822	175	ft-lb/in	388	kJ/m ²
Izod Impact Strength	D 256	2.0	ft-lb/in	105	J/m
Thermal					
Heat Deflection Temperature ⁽²⁾ at 264 psi (1.8 MPa)	D 648	387	°F	197	°C
Electrical					
Dielectric Strength, 1/8" (3.2 mm)	D 149	470	V/mil	18.5	kV/mm
Dielectric Constant at 1 MHz	D 150	3.4		3.4	
Dissipation Factor at 1 MHz	D150	0.008		0.008	
Volume Resistivity	D 257	>9 x 10 ¹⁵	ohm-cm	>9 x 10 ¹⁵	ohm-cm
General					
Specific Gravity	D 792	1.28		1.28	
Melt Flow at 715°F (380°C), 2.16 kg	D 1238	12	g/10 min	12	g/10 min
Mold Shrinkage	D 955	0.7	%	0.7	%
Moisture Absorption, 24 hours	D 570	0.3	%	0.3	%
Moisture Absorption, 30 days	D 570	0.9	%	0.9	%

⁽¹⁾ Properties of individual batches will vary within specification limits. Properties are typical of uncolored material. Colorants or other additives may alter properties.

⁽²⁾ Annealed 0.125 inch (3.2 mm) thick specimens.

Features

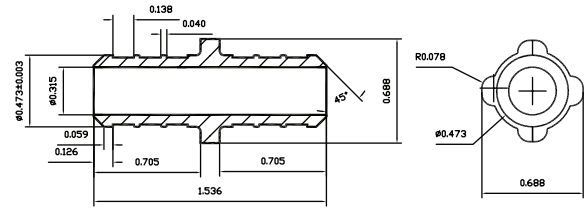
- Available in black or white
- Lead Free

Specifications & Approvals

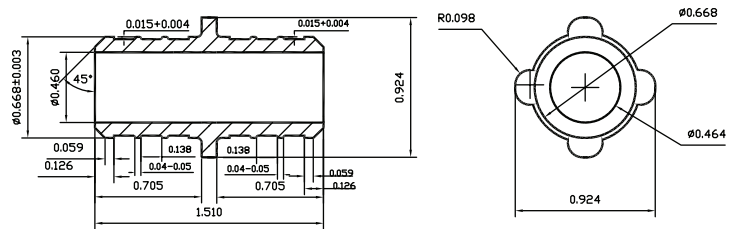
Acudel 22000 (PPSU) by injection molding
 Working Pressure: 100 PSI
 Working Temperature: 180°F
 Conforms to ASTM F2159 &F877, CSA B137.5,
 ANSI/NSF 61

PEX Couplings

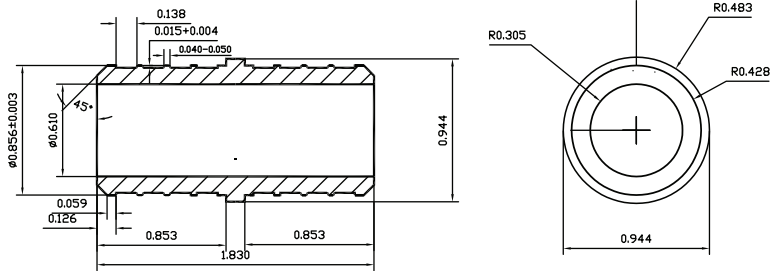
Part #	Size
1. PPCP0012	1/2"
2. PPCP0034	3/4"
3. PPCP0100	1"
4. PPRC3412	3/4" x 1/2"
5. PPRC1034	1" x 3/4"



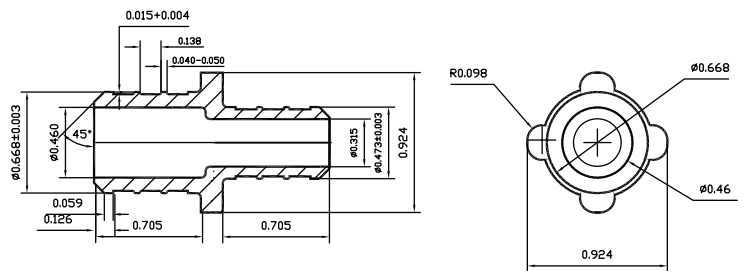
1



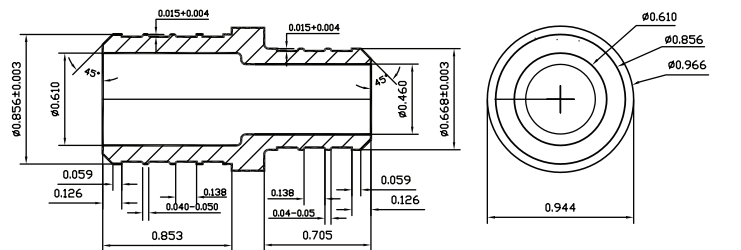
2



3



4



5

Features

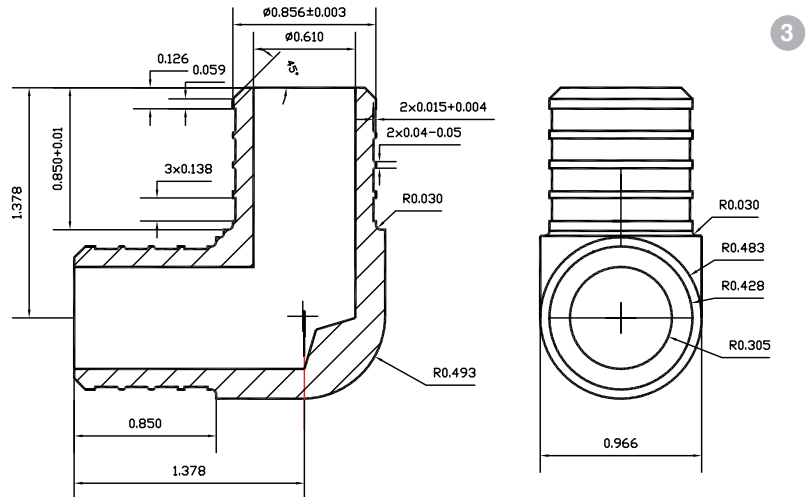
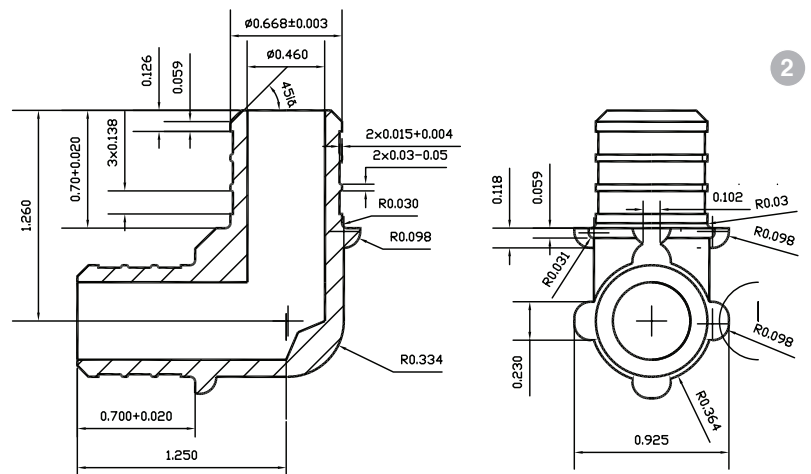
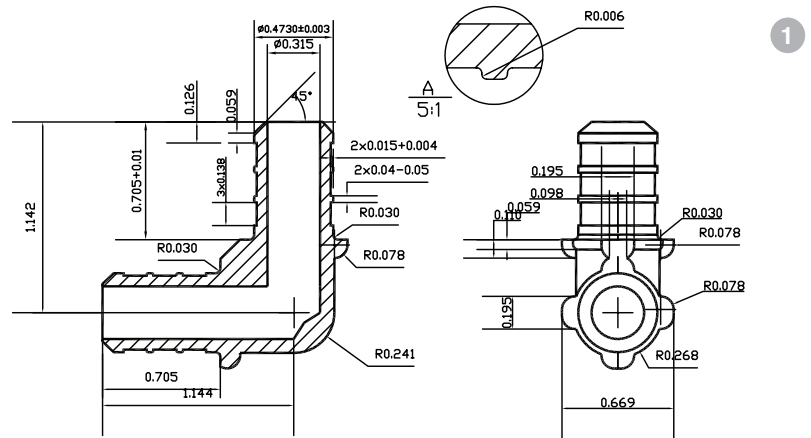
- Available in black or white
- Lead Free

Specifications & Approvals

Acudel 22000 (PPSU) by injection molding
 Working Pressure: 100 PSI
 Working Temperature: 180°F
 Conforms to ASTM F2159 & F877, CSA B137.5,
 ANSI/NSF 61

PEX Elbows

Part #	Size
1. PPLN0012	1/2"
2. PPLN0034	3/4"
3. PPLN0100	1"



Features

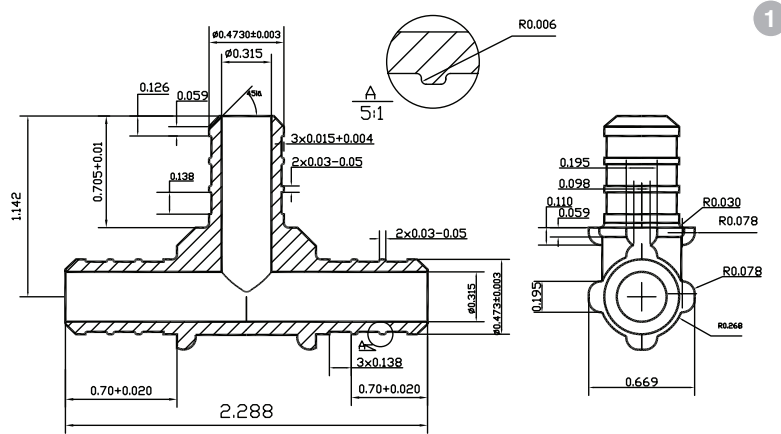
- Available in black or white
- Lead Free

Specifications & Approvals

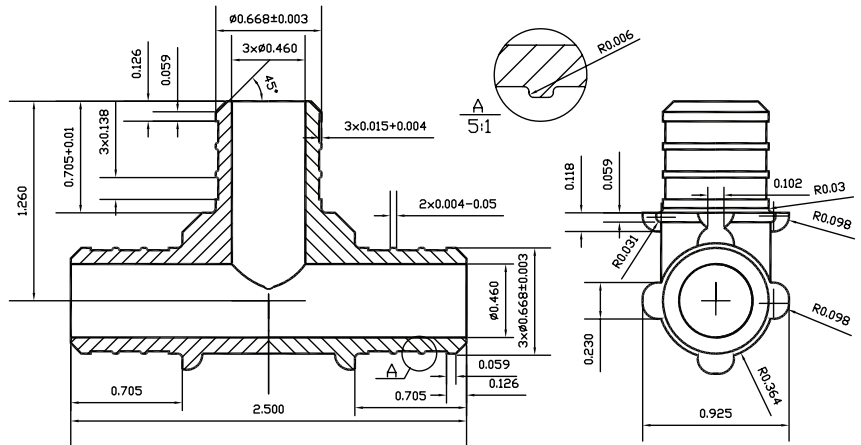
Acudel 22000 (PPSU) by injection molding
 Working Pressure: 100 PSI
 Working Temperature: 180°F
 Conforms to ASTM F2159 & F877, CSA B137.5,
 ANSI/NSF 61

PEX Tees

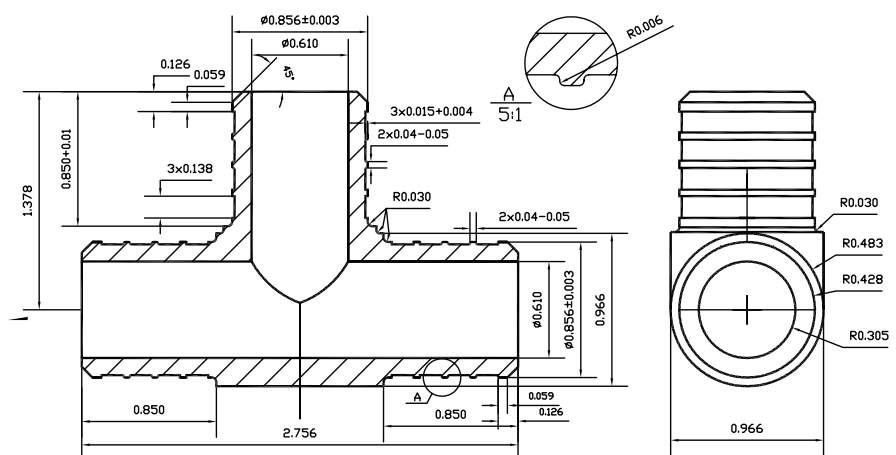
Part #	Size
1. PPTE0012	1/2"
2. PPTE0034	3/4"
3. PPTE0100	1"



1



2



3

Features

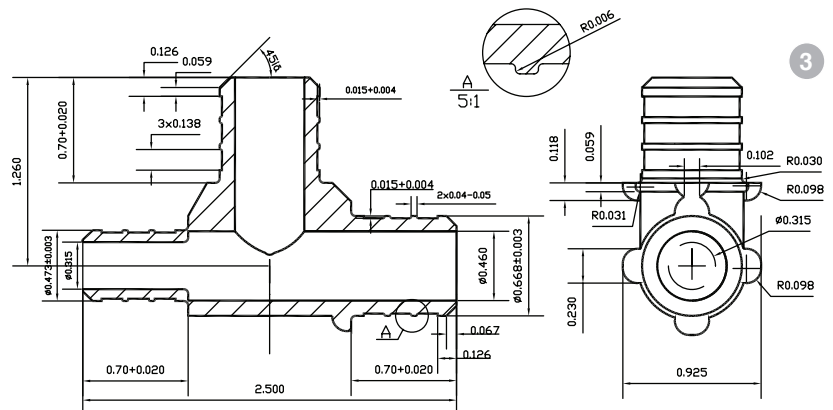
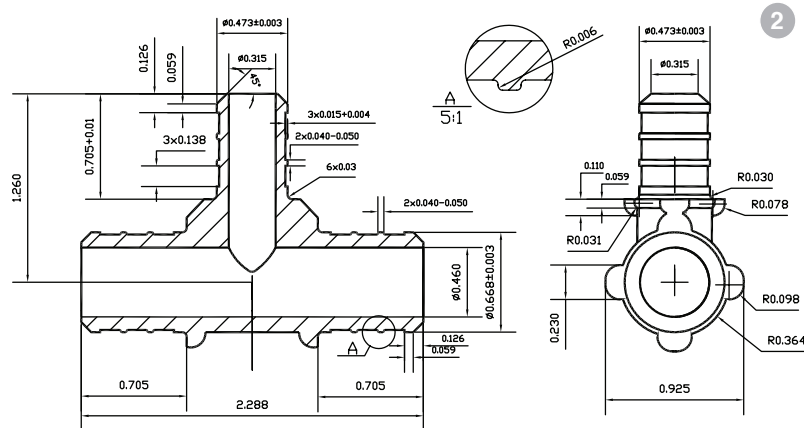
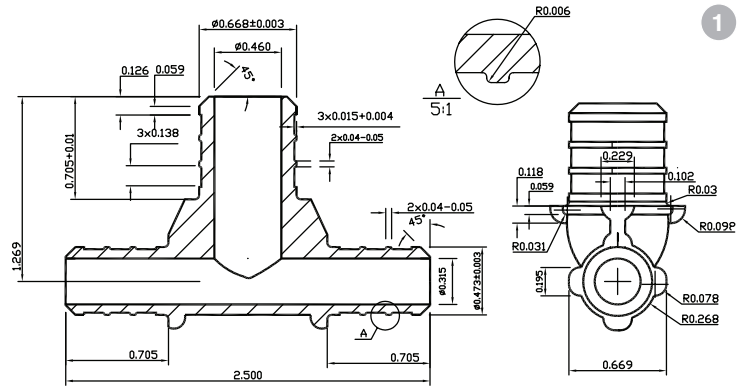
- Available in black or white
- Lead Free

Specifications & Approvals

Acudel 22000 (PPSU) by injection molding
 Working Pressure: 100 PSI
 Working Temperature: 180°F
 Conforms to ASTM F2159 & F877, CSA B137.5,
 ANSI/NSF 61

PEX Red. Tees

Part #	Size
1. PPRT1213	1/2" x 1/2" x 3/4"
2. PPRT3431	3/4" x 3/4" x 1/2"
3. PPRT3413	3/4" x 1/2" x 3/4"



Features

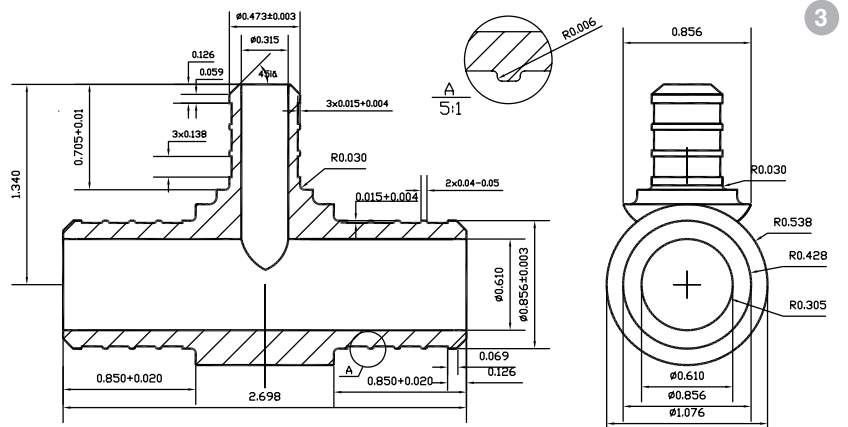
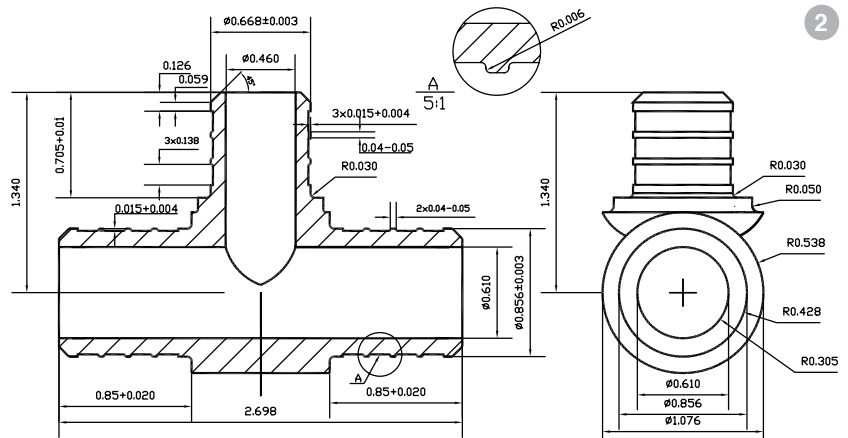
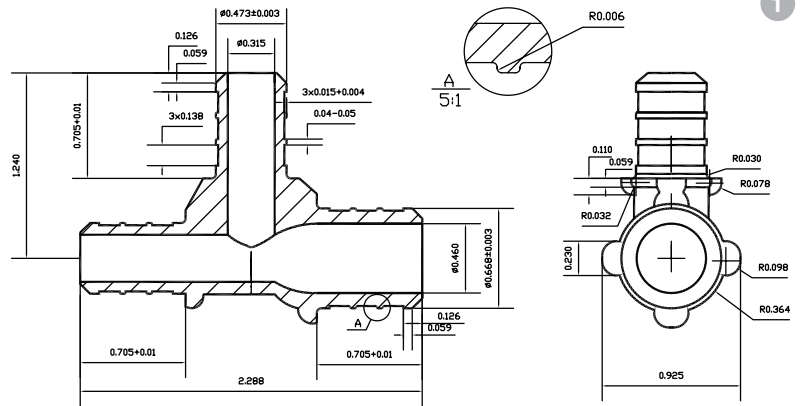
- Available in black or white
- Lead Free

Specifications & Approvals

Acudel 22000 (PPSU) by injection molding
 Working Pressure: 100 PSI
 Working Temperature: 180°F
 Conforms to ASTM F2159 & F877, CSA B137.5,
 ANSI/NSF 61

PEX Red. Tees

Part #	Size
1. PPRT3411	3/4" x 1/2" x 1/2"
2. PPRT1134	1" x 1" x 3/4"
3. PPRT1112	1" x 1" x 1/2"



Features

- Available in black or white
- Lead Free

Specifications & Approvals

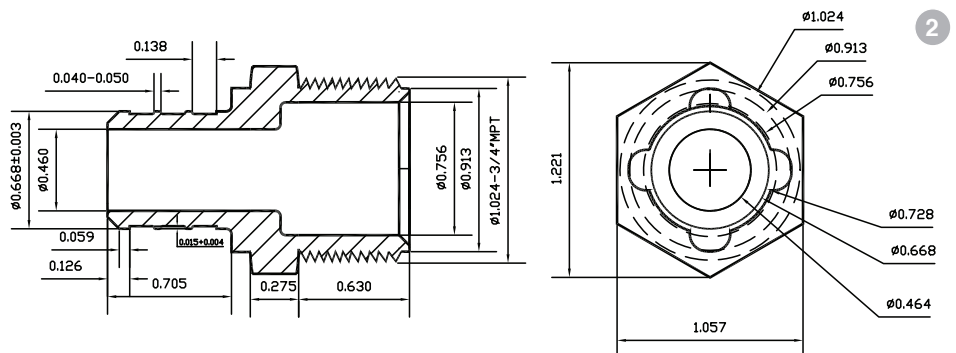
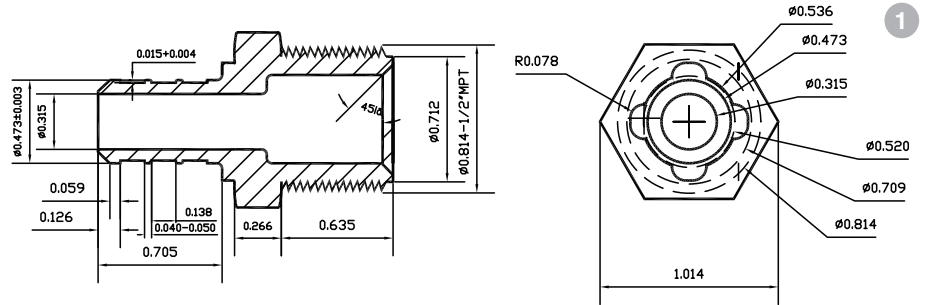
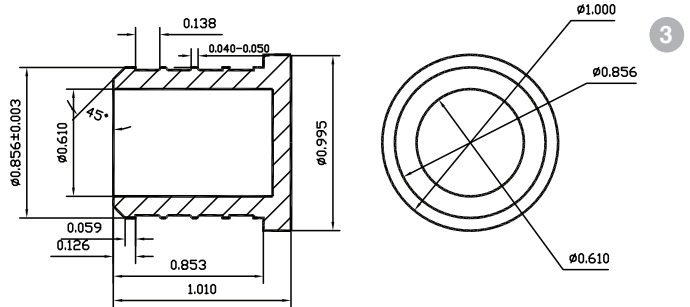
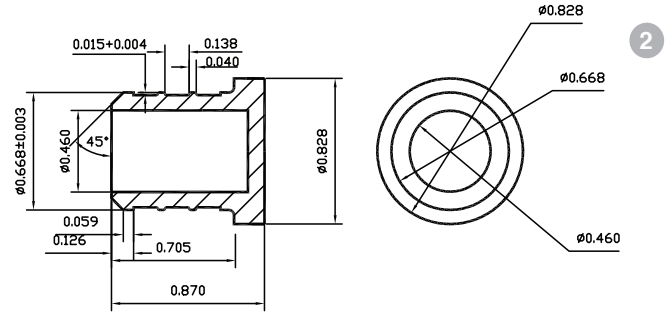
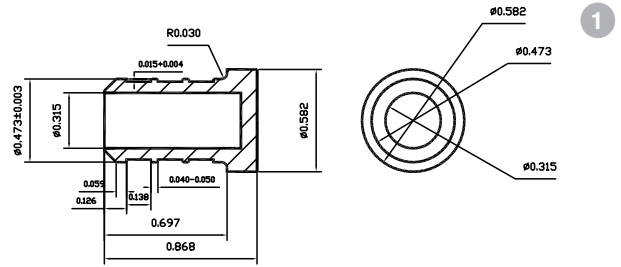
Acudel 22000 (PPSU) by injection molding
 Working Pressure: 100 PSI
 Working Temperature: 180°F
 Conforms to ASTM F2159 & F877, CSA B137.5,
 ANSI/NSF 61

PEX Plug

Part #	Size
1. PPPL0012	1/2"
2. PPPL0034	3/4"
3. PPPL0100	1"

PEX Adapter

Part #	Size
1. PPMA0012	1/2"
2. PPMA0034	3/4"



Features

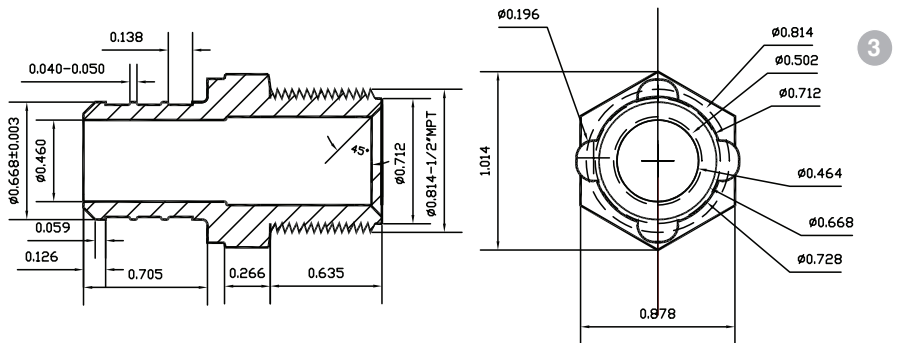
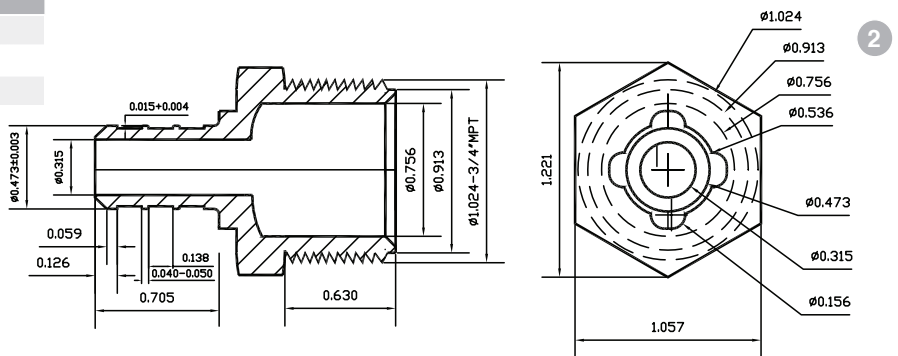
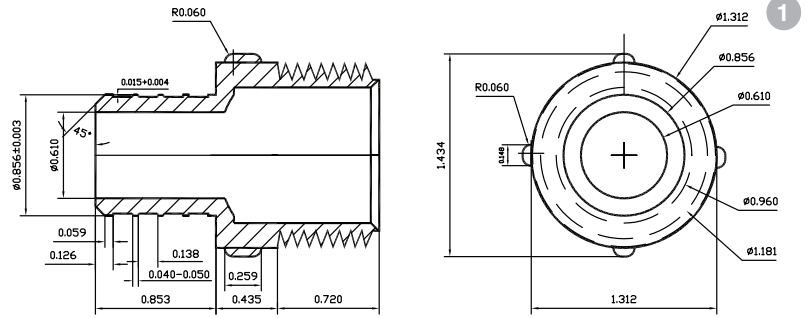
- Available in black or white
- Lead Free

Specifications & Approvals

Acudel 22000 (PPSU) by injection molding
 Working Pressure: 100 PSI
 Working Temperature: 180°F
 Conforms to ASTM F2159 & F877, CSA B137.5,
 ANSI/NSF 61

PEX Adapter

Part #	Size
1. PPMA1010	1"
2. PPMA1234	1/2" x 3/4"
3. PPMA3412	3/4" x 1/2"



Features

- Available in black or white
- Lead Free

Specifications & Approvals

Acudel 22000 (PPSU) by injection molding
 Working Pressure: 100 PSI
 Working Temperature: 180°F
 Conforms to ASTM F2159 & F877, CSA B137.5,
 ANSI/NSF 61

PEX Swivel Adapter

Part #	Size
1. PPCA0012	1/2" x 3/4"
2. PPCA0034	3/4"

