

Features

- Materials - Solvay Acudel 22000 BK937 / NT15 or Radel R5100 BK937 / NT15
- For use in hot and cold potable water systems
- Swivel nut is made from Nylon

Specifications & Approvals

- Max Temperature (no pressure) 320°F
- Max Working Temperature 210°F at 150psi
- CSA B 137.5, ASTM F1960, F877
- NSF61, NSF14, NSF372
- Thread fittings conform to: ASME A112.18.1-2011 / CSA B125.1-11



Drawing	Description	Size	Weight	Dimensions (measurement is mm unless marked ")			
				A	B	C	D
	F1960 Swivel Elbow	1/2" x 1/2"	16	43.1	31.0	21.0	1/2"
	F1960 Swivel Adapter	1/2" x 1/2"	12.84	39.7	21.0	1/2"	-
	F1960 Plug	1/2"	3.45	21.2	21.6	3	-
		3/4"	6.85	27.2	30.0	3	-
		1"	11.31	33.2	36.0	3	-
	F1960 Tee	1/2"	9.94	+	32.2	28.9	-
		3/4"	20.98	83.4	41.7	37.9	-
		1"	37.21	104.3	52.2	46.9	-
		1/2" x 1/2" x 3/4"	13.79	71.4	35.7	34.9	-
		3/4" x 1/2" x 1/2"	17.75	72.4	39.2	31.9	-
		3/4" x 1/2" x 3/4"	19.51	77.4	41.7	37.9	-
		3/4" x 3/4" x 1/2"	19.22	78.4	39.2	31.9	-
		3/4" x 3/4" x 1"	28.26	92.4	46.2	43.9	-
		1" x 3/4" x 3/4"	30.67	92.4	49.2	40.9	-
		1" x 1" x 1/2"	32.19	90.4	45.2	34.9	-
1" x 1" x 3/4"	33.74	98.4	49.2	40.9	-		
1" x 3/4" x 1"	34.16	98.4	52.2	46.9	-		

Features

- Materials - Solvay Acudel 22000 BK937 / NT15 or Radel R5100 BK937 / NT15
- For use in hot and cold potable water systems
- Swivel nut is made from Nylon

Specifications & Approvals

- Max Temperature (no pressure) 320°F
- Max Working Temperature 210°F at 150psi
- CSA B 137.5, ASTM F1960, F877
- NSF61, NSF 14, NSF372
- Thread fittings conform to: ASME A112.18.1-2011 / CSA B125.1-11



Drawing	Description	Size	Weight	Dimensions (measurement is mm unless marked ")			
				A	B	C	D
	F1960 Elbow Male NPT	1/2" x 1/2"	11.61	40.6	37.1	22.0	1/2"
	F1960 Male Adapter	1/2" x 1/2"	8.93	40.6	22	1/2" NPT	-
		1/2" x 3/4"	10.04	41.2	25.4	3/4" NPT	-
	F1960 Coupling	1/2"	5.51	39.4	21.6	3.0	-
		3/4"	10.12	51.4	30.0	3.0	-
		1"	17.52	63.4	36.0	3.0	-
		3/4" x 1/2"	7.99	45.4	30.0	3.0	-
		1" x 3/4"	14.15	57.4	36.0	3.0	-
	F1960 Elbow	1/2"	7.08	39.2	35.5	32.2	28.5
		1/2" x 3/4"	10	46.3	41.0	39.2	31.2
		3/4"	12.93	51.5	47.0	41.7	37.2
		1"	25.01	64.7	59.3	52.2	46.8

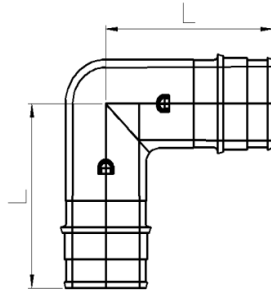
SIZES 1-1/4" - 2"

Features

- Made By Injection Molding
- Easy Installation
- Reduces Risk of Leaking
- High Design Flexibility

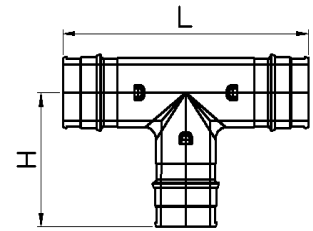
Specifications & Approvals

- Max Temperature (no pressure) 320°F
 Max Working Temperature 210°F at 150psi
- ASTM F877, ASTM F1960,
 NSF 14, NSF 61



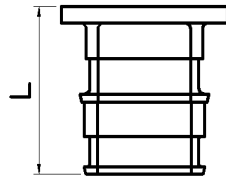
F1960 Elbow

Size	L	SDR
1-1/4"	2.449	9
1-1/2"	2.776	9
2"	3.764	9



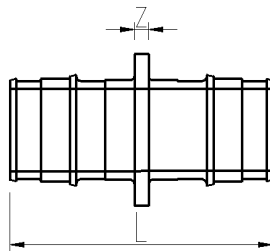
F1960 Tee

Size	L	H	SDR
1-1/4"	4.799	2.756	9
1-1/2"	5.811	2.827	9
2"	7.461	3.484	9
1-1/4" x 1-1/4" x 1/2"	4.803	1.575	9
1-1/4" x 1-1/4" x 3/4"	4.803	1.827	9
1-1/4" x 1-1/4" x 1"	4.803	2.067	9
1-1/2" x 1" x 1-1/2"	5.283	2.827	9
1-1/2" x 1-1/2" x 3/4"	5.811	2.509	9
1-1/2" x 1-1/2" x 1"	5.811	2.509	9
1-1/2" x 1-1/2" x 1-1/4"	5.811	2.559	9
2" x 2" x 1	7.142	2.402	9
2" x 2" x 1-1/4"	7.142	2.685	9
2" x 2" x 1-1/2"	7.142	2.953	9



F1960 Plug

Size	L	SDR
1-1/4"	1.614	9
1-1/2"	1.913	9
2"	2.398	9



F1960 Coupling

Size	L	Z	SDR
1-1/4"	3.067	0.157	9
1-1/2"	3.634	0.197	9
2"	4.559	0.236	9
1-1/4" x 1"	2.803	0.157	9
1-1/2" x 1-1/4"	3.370	0.197	9
1-1/4" x 3/4"	2.567	0.157	9
2" x 1-1/2"	4.114	0.236	9