

# PRODUCT DATA SHEET



## PEXFLOW™ PEX-B TUBING COILS & STRAIGHT LENGTHS

For use with:



### Product Application

Pexflow tubing is designed for use in hot/cold potable water distribution systems with a maximum design pressure and temperature rating of between 160psi @73f to 100psi @ 180F including hot water recirculation systems with temperatures up to 140F and is certified to be utilized with approved F1807 Brass, F2159 PPSU fittings and F2159/F2098 clamping systems. It is fully approved for use in low rise and high rise residential, commercial and Institutional use in most North American Jurisdictions. (check local code requirements)

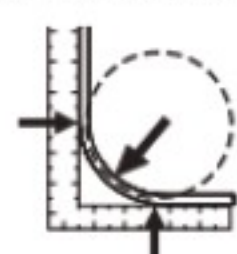
### Material

Pexflow pipe is manufactured from high grade PE resin designated Pex 5006 and features the industry proven reliability and consistency of Silane Cross Linking. The pipe is manufactured to CTS OD SDR9 nominal tube sizing as per F876/F877 Standards and it incorporates a multi-layering that provides superior UV protection and Chlorine resistance. Pipe is available in both coils and lengths and in red/blue and white colors for easy identification of lines during and after construction.

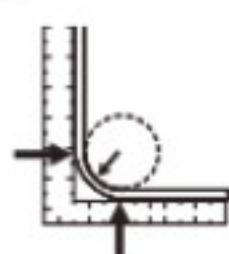
### Temperature and Pressure Ratings

160 psi at 73°F / 23°C  
100 psi at 180°F / 82°C

### Minimum Bend radius



CORRECT:  
8 x O.D.

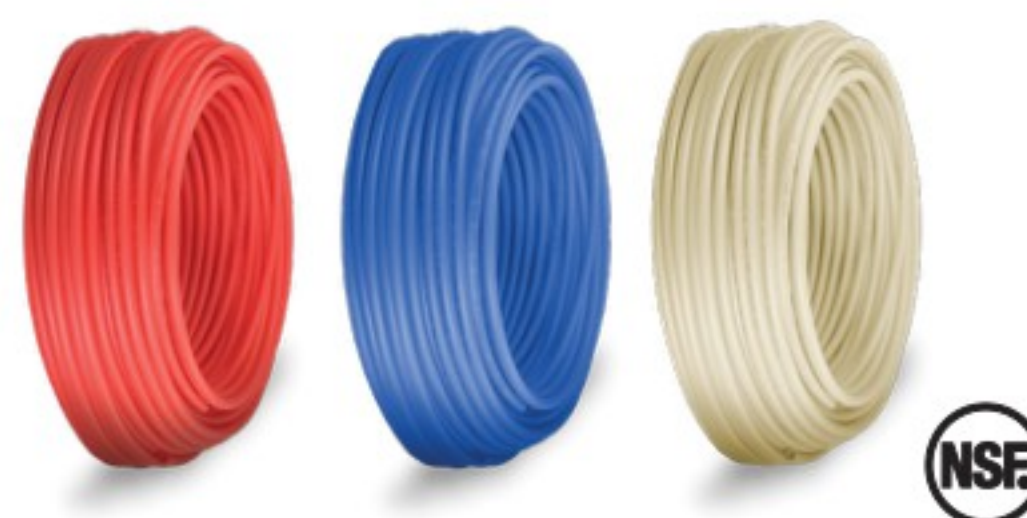


INCORRECT:  
PIPE FLATTENS  
AT THE BEND

PEX tubing may be bent to a minimum of (8 x OD or 5 x with approved bend support).

### Potable Water PEX

Size	Outside Diameter	Wall Thickness	Inside Diameter	Operating Pressure	Min Bend	Fluid Capacity per 100Ft.
3/8"	12.70mm	1.78mm	8.56mm	1. PN=0.69Mpa(100psi), T max=82°C(180°F) 2. PN=1.1Mpa(160psi) T max=23°C(73°F)	The minimum bending radius is eight times the outside diameter of the pipe	122.083
1/2"	15.88mm	1.78mm	11.72mm			221.582
5/8"	19.05mm	2.12mm	14.21mm			321.275
3/4"	22.22mm	2.47mm	16.68mm			436.863
1"	28.58mm	3.18mm	21.44mm			721.219
1-1/4"	34.92mm	3.88mm	26.28mm			1076.480
1-1/2"	41.27mm	4.59mm	31.59mm			-
2"	53.97mm	5.99mm	41.38mm			-



### Standards

Pexflow pipe meet all of the physical, design, performance and toxicological inspection test and certification requirements outlined by all of the Industry Standards and is fully approved for use In Commercial, Residential and North America. Has been rigorously tested by North Americas best in class test/certification and is certified to meet all of the physical, design, performance and toxicological inspection test and certification requirements outlined by all major Standards as outlined below and the pipe carries the following approvals: cNFSus, CSA B137.5, NSF to NSF14/NSF 61-G/NSF 372, NSF to Uniform Plumbing Code, NSF To standards F876/877/ F1807/ F2159/F2098, NSF to NSF-pw, NSF to SDR 9, NSF to PEX 5006

### Flow Rate Chart

Size	Min Flow Rate (gpm)	Max Flow Rate (gpm)
3/8"	0.6	1.3
1/2"	1.2	2.3
5/8"	1.7	3.3
3/4"	2.3	4.6
1"	3.8	7.5
1-1/4"	5.6	11.2
1-1/2"	7.8	15.6
2"	13.4	26.8

Minimum Burst Pressure (psi) per ASTM F876/F877		
Size	73°F (23°C)	180°F (82°C)
3/8"	620	275
1/2"	480	215
3/4"	475	210
1"	475	210
1-1/4"	475	210
1-1/2"	475	210
2"	475	210