

ApolloPress tee – reducing (P x P x P)



group: 811R category: fittingen product line: Apollo ApolloPress

The ApolloPress® 811R Small Diameter Press Reducing Outlet Tee features a lead free dezincification resistant copper body and an EPDM o-ring. ApolloPress® products are manufactured utilizing proven ASTM materials and standards.

- Lead Free Construction
- Leak Before Press® Technology

applications

potable water, heating, cooling,
compressed air, vacuum, steam,
sprinkler

segments

industry , fire protection , utility

approvals

IAPMO/ANSI/CAN Z1117 , ICC
LC1002 , CRN , FM , NSF/ANSI 372
, NSF/ANSI 61 , UL , ULc

assortment

code	size	weight	dimensions	packaging	gtin + upc
10077810	1/2" x 1/2" x 3/4"	0.15 kg	55x145x32 mm	-	00683264778108
10017784	3/4" x 1/2" x 1/2"	0.13 kg	-	-	00191988113513
10077784	3/4" x 1/2" x 1/2"	0.13 kg	53x108x32 mm	-	00683264777842
10077785	3/4" x 1/2" x 3/4"	0.15 kg	195x250x119 mm	-	00683264777859
10017745	3/4"x3/4"x1/2"	0.13 kg	-	-	00191988113483
10077745	3/4" x 3/4" x 1/2"	0.13 kg	53x80x32 mm	-	00683264777453
10066071	3/4" x 3/4" x 1"	0.34 kg	-	-	00683264660717
10077786	1" x 1/2" x 3/4"	0.22 kg	62x129x38 mm	-	00683264777866
10077787	1" x 1/2" x 1"	0.17 kg	64x135x38 mm	-	00683264777873
10077788	1" x 3/4" x 1/2"	0.17 kg	59x117x38 mm	-	00683264777880
10077789	1" x 3/4" x 3/4"	0.23 kg	62x125x38 mm	-	00683264777897
10077790	1" x 3/4" x 1"	0.21 kg	64x131x38 mm	-	00683264777903
10077746	1" x 1" x 1/2"	0.17 kg	59x84x38 mm	-	00683264777460
10017747	1" x 1" x 3/4"	0.21 kg	-	-	00191988113506
10077747	1" x 1" x 3/4"	0.21 kg	62x93x38 mm	-	00683264777477

code	size	weight	dimensions	packaging	gtin + upc
10077791	1 1/4" x 1/2" x 1 1/4"	0.29 kg	75x149x44 mm	-	00683264777910
10077792	1 1/4" x 3/4" x 3/4"	0.33 kg	79x146x44 mm	-	00683264777927
10077793	1 1/4" x 3/4" x 1"	0.36 kg	77x146x44 mm	-	00683264777934
10077794	1 1/4" x 3/4" x 1 1/4"	0.28 kg	75x146x44 mm	-	00683264777941
10077795	1 1/4" x 1" x 1/2"	0.2 kg	77x138x44 mm	-	00683264777958
10077796	1 1/4" x 1" x 3/4"	0.23 kg	79x104x44 mm	-	00683264777965
10077797	1 1/4" x 1" x 1"	0.25 kg	77x104x44 mm	-	00683264777972
10077748	1 1/4" x 1 1/4" x 1/2"	0.22 kg	77x105x44 mm	-	00683264777484
10077749	1 1/4" x 1 1/4" x 3/4"	0.23 kg	79x105x44 mm	-	00683264777491
10077750	1 1/4" x 1 1/4" x 1"	0.25 kg	77x105x44 mm	-	00683264777507
10066397	1 1/2" x 3/4" x 1"	0.52 kg	80x156x54 mm	-	00683264663978
10077798	1 1/2" x 1" x 3/4"	0.36 kg	78x143x54 mm	-	00683264777989
10077799	1 1/2" x 1" x 1"	0.36 kg	80x149x54 mm	-	00683264777996
10077800	1 1/2" x 1" x 1 1/2"	0.49 kg	87x162x54 mm	-	00683264778009
10066081	1 1/2" x 1" x 1 1/4"	0.31 kg	83x155x54 mm	-	00683264660816
10077801	1 1/2" x 1 1/4" x 3/4"	0.34 kg	78x137x54 mm	-	00683264778016
10077802	1 1/2" x 1 1/4" x 1"	0.55 kg	80x143x54 mm	-	00683264778023
10077803	1 1/2" x 1 1/4" x 1 1/4"	0.4 kg	83x111x54 mm	-	00683264778030
10077751	1 1/2" x 1 1/2" x 1/2"	0.4 kg	107x102x54 mm	-	00683264777514
10077752	1 1/2" x 1 1/2" x 3/4"	0.37 kg	78x102x54 mm	-	00683264777521
10077753	1 1/2" x 1 1/2" x 1"	0.38 kg	80x108x54 mm	-	00683264777538
10077754	1 1/2" x 1 1/2" x 1 1/4"	0.4 kg	83x114x54 mm	-	00683264777545
10066090	1 1/2" x 1 1/2" x 2"	1.16 kg	106x248x66 mm	-	00683264660908
10066197	2" x 1" x 1 1/2"	0.8 kg	110x201x66 mm	-	00683264661974
10066018	2" x 1" x 2"	0.86 kg	106x201x66 mm	-	00683264660182
10077804	2" x 1 1/4" x 1 1/4"	0.48 kg	98x174x66 mm	-	00683264778047
10066125	2" x 1 1/4" x 1 1/2"	0.83 kg	110x193x66 mm	-	00683264661257
10066064	2" x 1 1/4" x 2"	0.86 kg	106x193x66 mm	-	00683264660649

code	size	weight	dimensions	packaging	gtin + upc
10077805	2" x 1 1/2" x 3/4"	0.48 kg	93x160x66 mm	-	00683264778054
10077806	2" x 1 1/2" x 1"	0.51 kg	94x171x66 mm	-	00683264778061
10077807	2" x 1 1/2" x 1 1/4"	1.19 kg	98x178x66 mm	-	00683264778078
10077808	2" x 1 1/2" x 1 1/2"	0.71 kg	110x197x66 mm	-	00683264778085
10077809	2" x 1 1/2" x 2"	0.73 kg	106x197x66 mm	-	00683264778092
10077755	2" x 2" x 1/2"	0.48 kg	170x146x66 mm	-	00683264777552
10077756	2" x 2" x 3/4"	0.55 kg	93x112x66 mm	-	00683264777569
10077757	2" x 2" x 1"	0.73 kg	94x121x66 mm	-	00683264777576
10077758	2" x 2" x 1 1/4"	0.64 kg	98x127x66 mm	-	00683264777583
10077759	2" x 2" x 1 1/2"	0.72 kg	110x146x66 mm	-	00683264777590

specifications - product info

article	ApolloPress tee - reducing (P x P x P)
article number with gtin	811R
manufacturer	Aalberts integrated piping systems Americas, Inc. (Apollo)
weight	0.72 kg
dimensions	110x146x66 mm

specifications - characteristics

color	copper
materials	copper (CW024A (UNS C12200))
finishing	none
shape	T-piece, reducer, 90°
connection type	press (V)
sealing	EPDM

specifications - technical

max operating pressure liquid	20.67 bar
max medium temperature	121.11 cel

specifications - general

product group	fittingen (accessories (fittings))
ETIM class	EC003025 Fitting with 3 connections
brand	Apollo
series	ApolloPress
product type	811R
unsps	40174612

dimensions

code	size	d1	DN1	l1	z1	d2	DN2	l2	z2	d3	DN3	l3
10077810	1/2"	15.9	1/2"	43	24	22.2	3/4"	38	15	15.9	1/2"	43
	x											
	1/2"											
	x											
10017784	3/4"	22.2	3/4"	40	16	15.9	1/2"	38	18	15.9	1/2"	40
	x											
	1/2"											
	x											
10077784	1/2"											
	x											
	3/4"											
	x											
10077785	1/2"											
	x											
	3/4"											
	x											
10017745	3/4"	22.2	3/4"	44	22	22.2	3/4"	38	15	15.9	1/2"	48
	x											
	1/2"											
	x											
10077745	3/4"	22.2	3/4"	40	16	15.9	1/2"	38	18	22.2	3/4"	40
	x											
	3/4"											
	x											
10066071	1/2"											
	x											
	3/4"											
	x											
10077745	1"											
	x											
	3/4"											
	x											
10066071	1"											
	x											
	3/4"											
	x											

code	size	d1	DN1	l1	z1	d2	DN2	l2	z2	d3	DN3	l3
10077786	1"	28.6	1"	44	22	22.2	3/4"	42	19	15.9	1/2"	51
	x											
	1/2"											
	x											
10077787	3/4"											
	x											
	1/2"											
	x											
10077788	1"	28.6	1"	48	25	28.6	1"	43	20	15.9	1/2"	58
	x											
	1/2"											
	x											
10077789	1"	28.6	1"	40	18	15.9	1/2"	39	20	22.2	3/4"	47
	x											
	3/4"											
	x											
10077790	3/4"											
	x											
	1"	28.6	1"	44	22	22.2	3/4"	42	19	22.2	3/4"	51
	x											
10077746	3/4"											
	x											
	1"	28.6	1"	48	25	28.6	1"	43	20	22.2	3/4"	53
	x											
10017747	1"	28.6	1"	40	18	15.9	1/2"	39	20	28.6	1"	40
	x											
	1"											
	x											
10077747	1/2"											
	x											
	1"	28.6	1"	44	21	22.2	3/4"	47	23	28.6	1"	44
	x											
10077747	1"	28.6	1"	44	21	22.2	3/4"	47	23	28.6	1"	44
	x											
	1"											
	x											
10077747	3/4"											
	x											
	1"											
	x											
10077747	3/4"											
	x											
	1"											
	x											

code	size	d1	DN1	l1	z1	d2	DN2	l2	z2	d3	DN3	l3
10077747	1"	28.6	1"	44	22	22.2	3/4"	42	19	28.6	1"	44
	x											
	1"											
	x											
	3/4"											
10077791	1	34.9	1-	52	26	34.9	1-	48	22	15.9	1/2"	64
	1/4"		1/4"				1/4"					
	x											
	1/2"											
	x											
	1											
10077792	1/4"		1/4"									
	x											
	3/4"											
	x											
	3/4"											
10077793	1	34.9	1-	49	22	28.6	1"	46	23	22.2	3/4"	58
	1/4"		1/4"									
	x											
	3/4"											
	x											
10077794	1"											
	1	34.9	1-	52	26	34.9	1-	48	22	22.2	3/4"	62
	1/4"		1/4"				1/4"					
	x											
	3/4"											
	x											
	1											
	1/4"											

code	size	d1	DN1	l1	z1	d2	DN2	l2	z2	d3	DN3	l3
10077795	1	34.9	1-	42	16	15.9	1/2"	65	24	28.6	1"	46
	1/4"		1/4"									
	x											
	1"											
	x											
	1/2"											
10077796	1	34.9	1-	45	19	22.2	3/4"	45	23	28.6	1"	52
	1/4"		1/4"									
	x											
	1"											
	x											
	3/4"											
10077797	1	34.9	1-	49	22	28.6	1"	46	23	28.6	1"	55
	1/4"		1/4"									
	x											
	1"											
	x											
	1"											
10077748	1	34.9	1-	43	17	15.9	1/2"	43	24	34.9	1-	43
	1/4"		1/4"								1/4"	
	x											
	1											
	1/4"											
	x											
10077749	1	34.9	1-	46	20	22.2	3/4"	45	23	34.9	1-	46
	1/4"		1/4"								1/4"	
	x											
	1											
	1/4"											
	x											
10077748	1	34.9	1-	43	17	15.9	1/2"	43	24	34.9	1-	43
	1/4"		1/4"								1/4"	
	x											
	1											
	1/4"											
	x											

code	size	d1	DN1	l1	z1	d2	DN2	l2	z2	d3	DN3	l3
10077750	1	34.9	1-	49	22	28.6	1"	46	23	34.9	1-	49
	1/4"		1/4"								1/4"	
	x											
	1											
	1/4"											
	x											
10066397	1	41.3	1-	55	19	28.6	1"	53	30	22.2	3/4"	101
	1/2"		1/2"									
	x											
	3/4"											
	x											
	1"											
10077798	1	41.3	1-	53	17	22.2	3/4"	52	29	28.6	1"	58
	1/2"		1/2"									
	x											
	1"											
	x											
	3/4"											
10077799	1	41.3	1-	55	19	28.6	1"	50	27	28.6	1"	62
	1/2"		1/2"									
	x											
	1"											
	x											
	1"											
10077800	1	41.3	1-	65	29	41.3	1-	65	29	28.6	1"	69
	1/2"		1/2"				1/2"					
	x											
	1"											
	x											
	1											
	1/2"											

code	size	d1	DN1	l1	z1	d2	DN2	l2	z2	d3	DN3	l3
10066081	1	41.3	1-	58	22	34.9	1-	55	29	28.6	1"	96
	1/2"		1/2"				1/4"					
	x											
	1"											
	x											
	1											
10077801	1	41.3	1-	53	17	22.2	3/4"	52	29	34.9	1-	54
	1/2"		1/2"								1/4"	
	x											
	1											
	1/4"											
	x											
10077802	1	41.3	1-	55	19	28.6	1"	53	30	34.9	1-	59
	1/2"		1/2"								1/4"	
	x											
	1											
	1/4"											
	x											
10077803	1	41.3	1-	58	22	34.9	1-	55	29	34.9	1-	60
	1/2"		1/2"				1/4"				1/4"	
	x											
	1											
	1/4"											
	x											
10077751	1	41.3	1-	48	12	15.9	1/2"	47	28	41.3	1-	48
	1/2"		1/2"								1/2"	
	x											
	1											
	1/2"											
	x											

code	size	d1	DN1	l1	z1	d2	DN2	l2	z2	d3	DN3	l3
10077752	1	41.3	1-	53	17	22.2	3/4"	52	29	41.3	1-	53
	1/2"		1/2"								1/2"	
	x											
	1											
	1/2"											
	x											
10077753	3/4"											
	1	41.3	1-	55	19	28.6	1"	53	30	41.3	1-	55
	1/2"		1/2"								1/2"	
	x											
	1											
	1/2"											
10077754	x											
	1"											
	1	41.3	1-	58	22	34.9	1-	55	29	41.3	1-	58
	1/2"		1/2"				1/4"				1/2"	
	x											
	1											
10066090	1/2"											
	x											
	1	41.3	1-	124	91	54.0	2"	73	35	41.3	1-	124
	1/2"		1/2"								1/2"	
	x											
	2"											
10066197	2"	41.3	2"	69	29	41.3	1-	71	35	28.6	1"	122
	x						1/2"					
	1"											
	x											
	1											
	1/2"											

code	size	d1	DN1	l1	z1	d2	DN2	l2	z2	d3	DN3	l3
10066018	2"	54.0	2"	75	35	54.0	2"	75	35	28.6	1"	128
	x											
	1"											
	x											
10077804	2"	54.0	2"	64	24	34.9	1-	60	34	34.9	1-	73
	x						1/4"				1/4"	
	1											
	1/4"											
10066125	x											
	1											
	1/4"											
	x											
10066064	1											
	1/4"											
	x											
	2"											
10077805	2"	54.0	2"	58	18	22.2	3/4"	58	35	41.3	1-	70
	x										1/2"	
	1											
	1/2"											
	x											
	3/4"											

code	size	d1	DN1	l1	z1	d2	DN2	l2	z2	d3	DN3	l3
10077806	2"	54.0	2"	61	21	28.6	1"	58	35	41.3	1-	75
	x										1/2"	
	1											
	1/2"											
	x											
10077807	1"											
	2"	34.9	2"	64	24	34.9	1-	64	38	41.3	1-	76
	x						1/4"				1/2"	
	1											
	1/2"											
10077808	x											
	1											
	1/2"											
	x											
	1											
10077809	1/2"											
	x											
	1											
	1/2"											
	x											
10077755	2"	54.0	2"	54	14	15.9	1/2"	52	33	54.0	2"	54
	x											
	2"											
	x											
	1/2"											

code	size	d1	DN1	l1	z1	d2	DN2	l2	z2	d3	DN3	l3
10077756	2"	54.0	2"	60	20	22.2	3/4"	55	32	54.0	2"	60
	x											
	2"											
	x											
10077757	3/4"											
	2"	54.0	2"	63	23	28.6	1"	56	33	54.0	2"	63
	x											
	2"											
10077758	x											
	2"											
	x											
	1"											
10077758	2"	54.0	2"	67	26	34.9	1-	61	35	54.0	2"	67
	x						1/4"					
	2"											
	x											
10077759	1											
	1/4"											
	2"	54.0	2"	69	29	41.3	1-	71	35	54.0	2"	69
	x						1/2"					
10077759	2"											
	x											
	2"											
	x											
10077759	1											
	1/2"											
	2"											
	x											
10077810	1/2"											
	x											
	1/2"	24										
	x											
10017784	3/4"											
	x											
	1/2"											
	x											
10017784	1/2"											
	x											
	1/2"											
	x											

code	size	z3
10077784	3/4"	25
	x	
	1/2"	
	x	
	1/2"	
10077785	3/4"	29
	x	
	1/2"	
	x	
	3/4"	
10017745	3/4"x3/4"x1/2"	16
10077745	3/4"	18
	x	
	3/4"	
	x	
	1/2"	
10066071	3/4"	59
	x	
	3/4"	
	x	
	1"	
10077786	1"	32
	x	
	1/2"	
	x	
	3/4"	
10077787	1"	39
	x	
	1/2"	
	x	
	1"	

code	size	z3
10077788	1"	24
	x	
	3/4"	
	x	
	1/2"	
10077789	1"	28
	x	
	3/4"	
	x	
	3/4"	
10077790	1"	30
	x	
	3/4"	
	x	
	1"	
10077746	1"	18
	x	
	1"	
	x	
	1/2"	
10017747	1"	21
	x	
	1"	
	x	
	3/4"	
10077747	1"	22
	x	
	1"	
	x	
	3/4"	

code	size	z3
10077791	1	45
	1/4"	
	x	
	1/2"	
	x	
	1	
10077792	1/4"	33
	x	
	3/4"	
	x	
	3/4"	
10077793	1	36
	1/4"	
	x	
	3/4"	
	x	
	1"	
10077794	1	39
	1/4"	
	x	
	3/4"	
	x	
	1	
10077795	1/4"	23
	x	
	1"	
	x	
	1/2"	

code	size	z3
10077796	1	29
	1/4"	
	x	
	1"	
	x	
	3/4"	
10077797	1	33
	1/4"	
	x	
	1"	
	x	
	1"	
10077748	1	17
	1/4"	
	x	
	1	
	1/4"	
	x	
	1/2"	
10077749	1	20
	1/4"	
	x	
	1	
	1/4"	
	x	
	3/4"	
10077750	1	22
	1/4"	
	x	
	1	
	1/4"	
	x	
	1"	

code	size	z3
10066397	1	78
	1/2"	
	x	
	3/4"	
	x	
10077798	1	35
	1/2"	
	x	
	1"	
	x	
10077799	1	39
	1/2"	
	x	
	1"	
	x	
10077800	1	46
	1/2"	
	x	
	1"	
	x	
10066081	1	73
	1/2"	
	x	
	1"	
	x	
	1	
	1/4"	

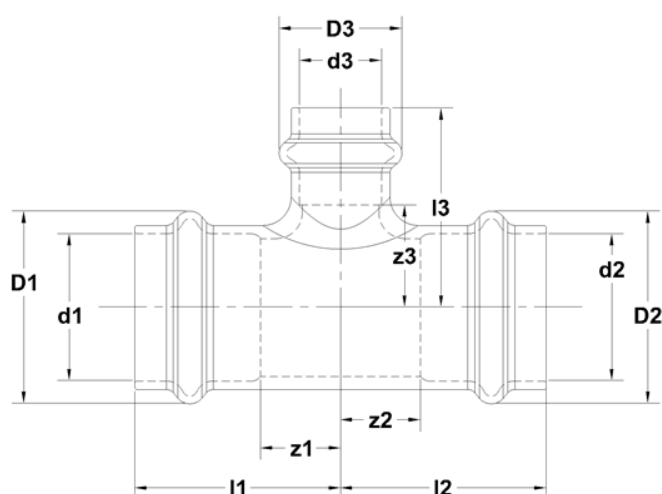
code	size	z3
10077801	1	27
	1/2"	
	x	
	1	
	1/4"	
	x	
10077802	3/4"	
	1	33
	1/2"	
	x	
	1	
	1/4"	
10077803	x	
	1"	
	1	34
	1/2"	
	x	
	1	
10077751	1/4"	
	x	
	1	12
	1/2"	
	x	
	1/2"	
10077752	1	17
	1/2"	
	x	
	1	
	1/2"	
	x	
	3/4"	

code	size	z3
10077753	1	19
	1/2"	
	x	
	1	
	1/2"	
	x	
	1"	
10077754	1	22
	1/2"	
	x	
	1	
	1/2"	
	x	
	1/4"	
10066090	1	91
	1/2"	
	x	
	1	
	1/2"	
	x	
	2"	
10066197	2"	97
	x	
	1"	
	x	
	1	
	1/2"	
10066018	2"	103
	x	
	1"	
	x	
	2"	

code	size	z3
10077804	2"	48
	x	
	1	
	1/4"	
	x	
	1	
10066125	1/4"	
	x	
	1	
	1/4"	
	x	
	1	
10066064	1/2"	
	2"	87
	x	
	1	
	1/4"	
	x	
10077805	2"	93
	x	
	1	
	1/4"	
	x	
	2"	
10077806	2"	34
	x	
	1	
	1/2"	
	x	
	3/4"	
10077806	2"	39
	x	
	1	
	1/2"	
	x	
	1"	

code	size	z3
10077807	2"	39
	x	
	1	
	1/2"	
	x	
	1	
10077808	1/4"	43
	2"	
	x	
	1	
	1/2"	
	x	
10077809	1	51
	1/2"	
	x	
	2"	
10077755	2"	14
	x	
	2"	
	x	
	1/2"	
10077756		20
	2"	
	x	
	2"	
	x	
10077757	3/4"	23
	2"	
	x	
	2"	
	x	
	1"	

code	size	z3
10077758	2" x 2" x 1 1/4"	26
10077759	2" x 2" x 1 1/2"	29



downloads

⬇ 811R - jpg

⬇ ApolloPress Catalog - pdf

⬇ Diagram - png

⬇ ApolloPress Brochure - pdf