



# CROWN BOILER

## BERMUDA

GAS-FIRED STEAM BOILER

Designed for reliability, efficiency and performance. For residential and small commercial applications with approved chimney.

- ♦ Cast iron heat exchanger
- ♦ Stainless steel burners
- ♦ Built-in draft diverter to fit low spaces
- ♦ Automatic vent damper included\*
- ♦ Attractive, rugged jacket
- ♦ Fully assembled or available as knock-down package
- ♦ Ten sizes from 69 to 379 MBH
- ♦ Designed for installation on combustible floors

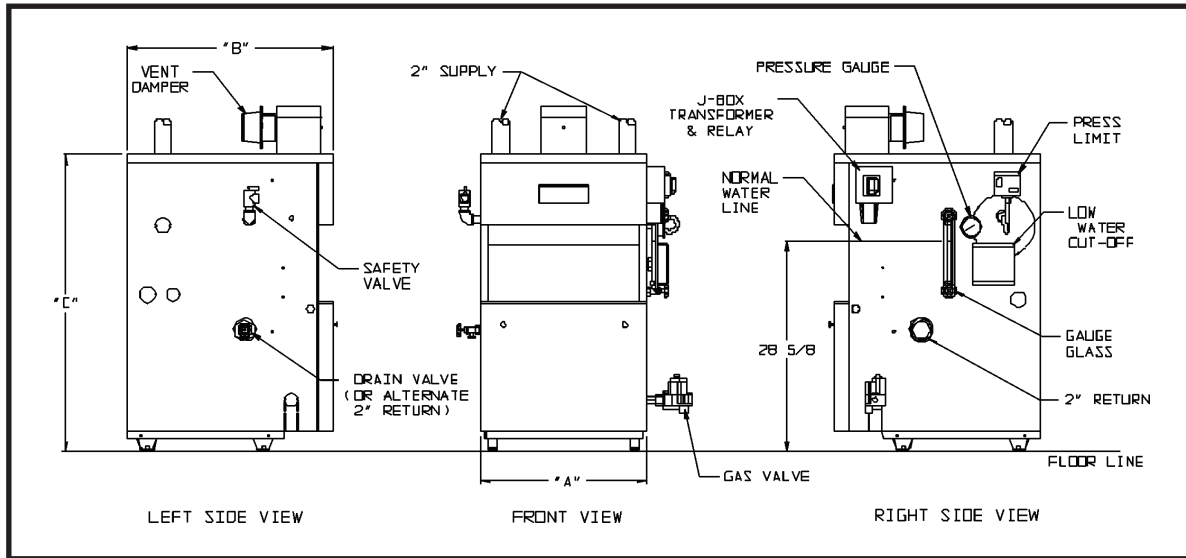
\*BSI069 through BSI276

See back side for piping configurations.



# BSI SERIES - BERMUDA

## TECHNICAL SPECIFICATIONS



MODEL	NO. OF SECS	NATURAL OR LP GAS				AFUE %	APPROX. SHIPPING WEIGHT (PKG)	DIMENSIONS (INCHES)			
		INPUT (MBH)	HEATING CAPACITY (MBH)	AHRI NET RATING (STEAM)				A	B	C	FLUE COLAR DIAMETER
				SQ. FT.	MBH						
BSI069	3	69	56	179	49	81.9	354	12-3/4	28	40-7/16	4
BSI103	4	103	84	267	73	82.0	432	16	28	40-7/16	5
BSI138	5	138	113	354	98	82.1	504	19-1/4	28	40-7/16	6
BSI172	6	172	142	446	123	82.2	589	22-1/2	28	40-7/16	6
BSI207	7	207	171	533	149	82.3	669	25-3/4	30	40-7/16	7
BSI241 <sup>†</sup>	8	241	200	621	174	82.4	745	29	30	40-7/16	7
BSI276 <sup>†</sup>	9	276	229	708	199	82.5	826	32-1/4	30	40-7/16	8
BSI311 <sup>**</sup>	10	310	253	790	190	77.5 <sup>**</sup>	957	35-1/2	30	45-7/16	8
BSI346 <sup>**</sup>	11	345	281	879	211	77.5 <sup>**</sup>	1044	38-3/4	30	45-7/16	9
BSI380 <sup>**</sup>	12	379	309	966	232	77.5 <sup>**</sup>	1125	42	30	45-7/16	9

1. USA - For altitudes above 2,000 ft. ratings should be reduced at the rate of 4% for each 1,000 ft above sea level.

<sup>†</sup>Available as semi-packaged boiler

\*Not available for elevations above 2,000 ft. or for use with LP gas

\*\*Thermal efficiency

All residential cast iron steam boilers include a full one-year warranty. A 12-year limited warranty is provided for the heat exchanger. A 5-year and a 10-year extended warranty covering parts and labor are also available. Visit [CrownBoiler.com](http://CrownBoiler.com) or see your warranty for complete details.



The Mega-Stor<sup>®</sup> indirect water heater utilizes the energy created by your boiler to produce abundant hot water for your home. Mega-Stor water heaters come in a variety of sizes from 26 to 119 gallons to meet a multitude of residential and commercial needs.

### ADDITIONAL FEATURES/BENEFITS

- Available with natural or LP gas
- Probe low water cut-off standard; option of float low water cut-off or low water cut-off/feeder combo
- Isolation relay simplifies thermostat wiring
- Redundant gas valve
- Roll-out switch; blocked vent switch
- Glass gauge set

Specifications are subject to change without notice.



[www.crownboiler.com](http://www.crownboiler.com) | Philadelphia PA

BSI - 08/12  
PN 980531 - R4