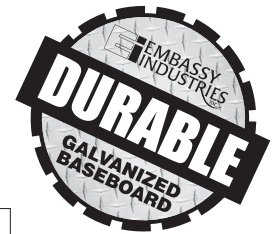
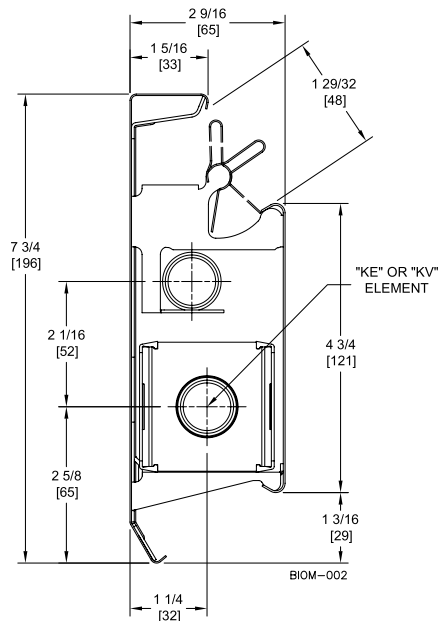


PANEL-TRACK Residential Hot Water Baseboard

DIMENSIONAL DATA



RATINGS

Model	GPM	Average Hot Water Temperature - BTU/HR./LIN. FT.									
		120°F	130°F	140°F	150°F	160°F	170°F	180°F	190°F	200°F	210°F
KPT-E 3/4"	4	205	261	316	356	419	510	570	630	700	760
	1	195	248	300	338	398	480	540	600	660	720
KVP-D 1/2"	4	216	274	332	374	440	540	600	680	730	790
	1	204	259	314	353	416	510	570	640	690	750

CORRECTION FACTORS

If the calculated water flow rate through a baseboard is greater than the standard flow rate (1 GPM), the rating of that unit may be increased by multiplying the standard water rating at 1 GPM by the factor shown for the actual flow rate. All ratings based on 65°F entering air temperature.

WATER FLOW CORRECTION FACTORS

G.P.M.	Heat Output Factor	Pressure Drop – Millinches Per Ft. Copper Element Tube Size	
		3/4"	1/2"
1.0	1.000	47	260
1.5	1.016	96	520
2.0	1.028	157	850
2.5	1.038	230	1270
3.0	1.045	320	1730
3.5	1.051	420	2290
4.0	1.057	525	2880
4.5	1.062	650	3600
5.0	1.067	775	4300
6.0	1.074	1060	5900









PANEL-TRACK BASEBOARD

Size	Unit	Part Number	Catalog Number	Unit Length in Ft.	Lin. Ft. Per Crtn.	Approx. Crtn. Wt. in lbs.	Package Content
3/4"	Enclosure and Element Complete Assembled Single Pack	5612231210	KRP-10*	10	10	24	Contains one length each of front panel, back panel, damper, support brackets, slide shoes, and heating element. Splice plates included with lengths of 5', 6', and 8'.
		5612231209	KRP-9*	9	9	22	
		5612231208	KRP-8	8	8	19	
		5612231207	KRP-7	7	7	17	
		5612231206	KRP-6	6	6	14	
		5612231205	KRP-5	5	5	12	
		5612231204	KRP-4	4	4	10	
		5612231203	KRP-3	3	3	7	
1/2"	Complete Assembled Single Pack	5612231202	KRP-2	2	2	5	
		5612231010	KVP-10*	10	10	22	
		5612231009	KVP-9*	9	9	20	
		5612231008	KVP-8	8	8	18	
		5612231007	KVP-7	7	7	15	
		5612231006	KVP-6	6	6	13	
		5612231005	KVP-5	5	5	11	
		5612231004	KVP-4	4	4	9	
N/A	Enclosure Only Assembled Single Pack	5612231003	KVP-3	3	3	7	
		5612231002	KVP-2	2	2	4	
		5612231110	KCA-10	10	10	18	
		5612231109	KCA-9	9	9	16	
		5612231108	KCA-8	8	8	14	
		5612231107	KCA-7	7	7	13	
		5612231106	KCA-6	6	6	11	
		5612231105	KCA-5	5	5	9	
3/4" 1/2"	Element Only Single Pack	5612231104	KCA-4	4	4	7	
		5612231103	KCA-3	3	3	5	
		5612231102	KCA-2	2	2	4	
		5612641308	KE-8	8	8	5	
		5612641307	KE-7	7	7	4	
		5612641306	KE-6	6	6	4	
		5612641305	KE-5	5	5	3	
		5612641304	KE-4	4	4	2	
		5612641303	KE-3	3	3	2	
		5612641302	KE-2	2	2	1	
		5612641508	KV-8	8	8	3	
		5612641507	KV-7	7	7	3	
		5612641506	KV-6	6	6	2	
		5612641505	KV-5	5	5	2	
5612641504	KV-4	4	4	2			
5612641503	KV-3	3	3	1			
5612641502	KV-2	2	2	3			

Note: Shipped on pallets - Standard pallet quantity is 65 cartons for 2' - 8', 55 cartons for 9' and 10'.

* Shipped with two smaller elements to equal total length.

PANEL-TRACK ACCESSORIES

	Size	Description	Orientation	Part Number	Catalog Number	Carton Quantity	Shipping Wt. in lbs.
	3"	Solid End Cap	LH	5612275121	KCC-L	48	28
			RH	5612275128	KCC-R		
	3"	Slotted End Cap	LH	5612275821	KCCS-L	12	7
			RH	5612275828	KCCS-R		
	6"	Hinged End Cap	LH	5612275221	KHC-L	12	12
			RH	5612275228	KHC-R		
	90°	Inside Corner		5612275390	KIC-90	12	3
	135°			5612275345	KIC-45		
	90°	Outside Corner		5612275490	KOC-90	12	7
	135°			5612275445	KOC-45	12	14
	3"	Wall Trim	LH	5612275592-L	KWJ-3L	24	7
			RH	5612275592-R	KWJ-3R		
	5"		LH	5612275594-L	KWJ-5L	12	6
			RH	5612275594-R	KWJ-5R		
	7"	Fill In Section		5612245897	KEX-7	24	20
	14"			5612245898	KEX-14	12	21
	N/A	Hanger Bracket*		5612137477	KHB	As Ordered	1
		Splice Set**		5612245777	KSP	As Ordered	1
		Touch-Up Spray Paint		5612240000	K-TUP	As Ordered	3

TERMS & CONDITIONS

PRICES: Published trade prices in effect at time of receipt of order at our office are firm provided the complete order is released for fabrication and shipment.

TERMS: 1% 15th Prox.
Prepaid freight or cartage charges paid by us are not subject to cash discount.

TAXES: The prices listed herein exclude Federal, State, or Municipal Tax applicable to the transaction. Such taxes, where applicable to the transaction should be paid directly to the governing authority by the Purchaser.

VALID ORDERS: An order is not valid until acknowledged by the manufacturer.

CLAIMS: As all goods are shipped at buyer's risk, they should be examined carefully before signing transportation receipts. If transportation company tenders delivery of goods in bad order, buyer should insist on transportation agent making notation of conditions on freight bills, thus enabling buyer to secure prompt payment of transportation payment claims filed by him for value of damaged material.

The responsibility of this Company ceases upon delivery of goods in good order to transportation companies. All orders are accepted subject to delays on account of government requirements, strikes, accident or other causes beyond our control.

MINIMUM ORDERS: Orders with an invoice value of less than \$25.00 will be invoiced at \$25.00.

RETURNED GOODS: Goods must not be returned except by written permission, and when so returned will be subject to a deduction of twenty-five percent (25%) for rehandling, and all transportation charges, including freight and cartage, will be paid by shipper. Material made on special order or obsolete is not subject to return.

FREIGHT TERMS: Orders consisting of less than 2000' linear feet are F.O.B. Westfield, Massachusetts or Hauppauge New York. Orders consisting of 2000' linear feet or 5000 lbs will ship Full Freight Allowed (FFA) in the continental United States (lower forty-eight states) using Embassy Industries' contracted carriers.

FOR SMALLER ORDERS, SHIPMENTS ARE F.O.B. WESTFIELD, MASSACHUSETTS WITH NO FREIGHT ALLOWED.

LIMITED WARRANTY

The Manufacturer warrants to the original owner at the original installation site that the Product will be free from defects in material or workmanship for a period not to exceed one (1) year from startup or eighteen (18) months from date of shipment from the factory, whichever occurs first. If upon examination by the Manufacturer the Product is shown to have a defect in material or workmanship during the warranty period, the Manufacturer will repair or replace, at its option, that part of the Product which is shown to be defective.

This limited warranty does not apply:

- (a) if the Product has been subjected to misuse or neglect, has been accidentally or intentionally damaged, has not been installed, maintained or operated in accordance with the furnished written instructions, or has been altered or modified in any way.
- (b) to any expenses, including labor or material, incurred during removal or reinstallation of the Product.
- (c) to any workmanship of the installer of the Product.

This limited warranty is conditional upon:

- (a) shipment, to the Manufacturer, of that part of the Product thought to be defective. Goods can only be returned with prior written approval from the Manufacturer. All returns must be freight prepaid.

- (b) determination, in the reasonable opinion of the Manufacturer, that there exists a defect in material or workmanship.

Repair or replacement of any part under this Limited Warranty shall not extend the duration of the warranty with respect to such repaired or replaced part beyond the stated warranty period.

THIS LIMITED WARRANTY IS IN LIEU OF ALL OTHER WARRANTIES, EITHER EXPRESS OR IMPLIED, AND ALL SUCH OTHER WARRANTIES, INCLUDING WITHOUT LIMITATION IMPLIED WARRANTIES OF MERCHANTABILITY OR FITNESS FOR A PARTICULAR PURPOSE, ARE HEREBY DISCLAIMED AND EXCLUDED FROM THIS LIMITED WARRANTY. IN NO EVENT SHALL THE MANUFACTURER BE LIABLE IN ANY WAY FOR ANY CONSEQUENTIAL, SPECIAL, OR INCIDENTAL DAMAGES OF ANY NATURE WHATSOEVER, OR FOR ANY AMOUNTS IN EXCESS OF THE SELLING PRICE OF THE PRODUCT OR ANY PARTS THEREOF FOUND TO BE DEFECTIVE. THIS LIMITED WARRANTY GIVES THE ORIGINAL OWNER OF THE PRODUCT SPECIFIC LEGAL RIGHTS. YOU MAY ALSO HAVE OTHER RIGHTS WHICH MAY VARY BY EACH JURISDICTION.