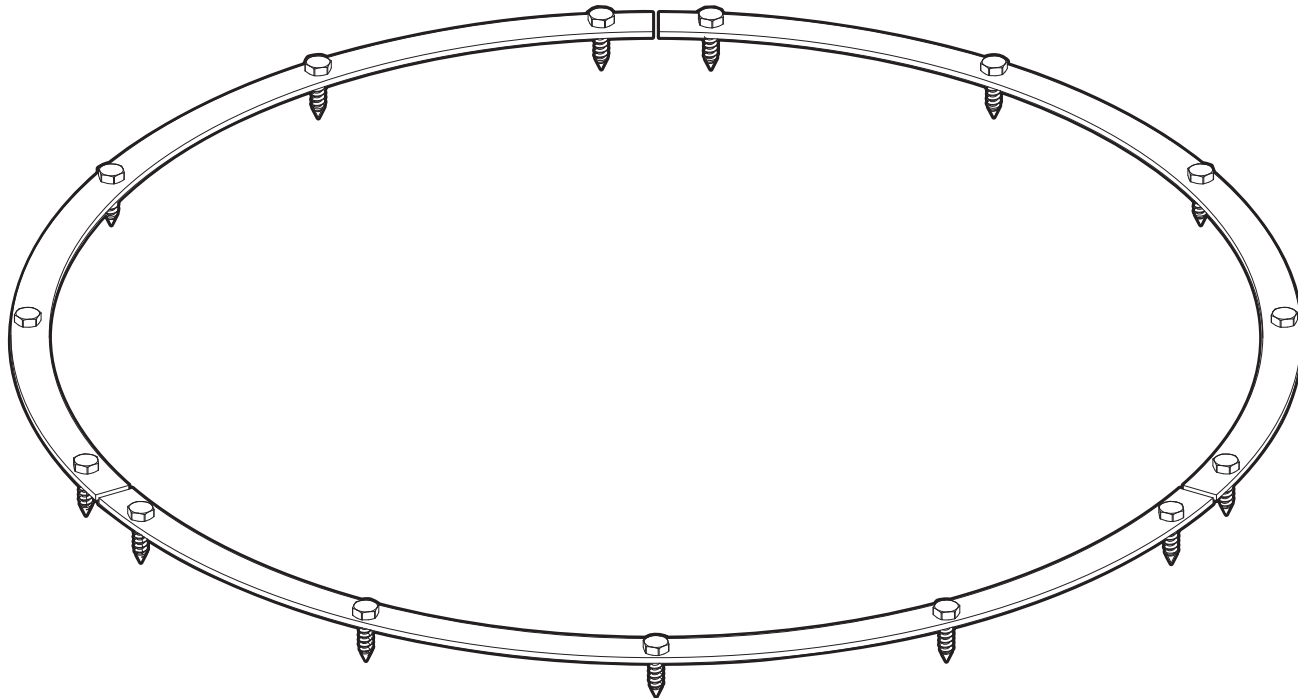


SPECIFICATION AND INSTALLATION GUIDE

CC1

Clamping Collar Kit for use with Grease Interceptors Models GB1, GB2 and GB3



Contents

| | |
|-------------------------------|-----|
| Specifications | 1 |
| Getting to Know the CC1 | 2 |
| Installation | 3-4 |

Notes

1. 12 ga. Stainless steel clamping bars
2. Unit weight: 10 lbs.

Engineer Specification Guide:

Clamping Collar kit to consist of stainless steel clamping bars and stainless steel self tapping hex head mounting screws.



SCHIER

MODEL NUMBER:

CC1

DESCRIPTION: Clamping Collar Kit

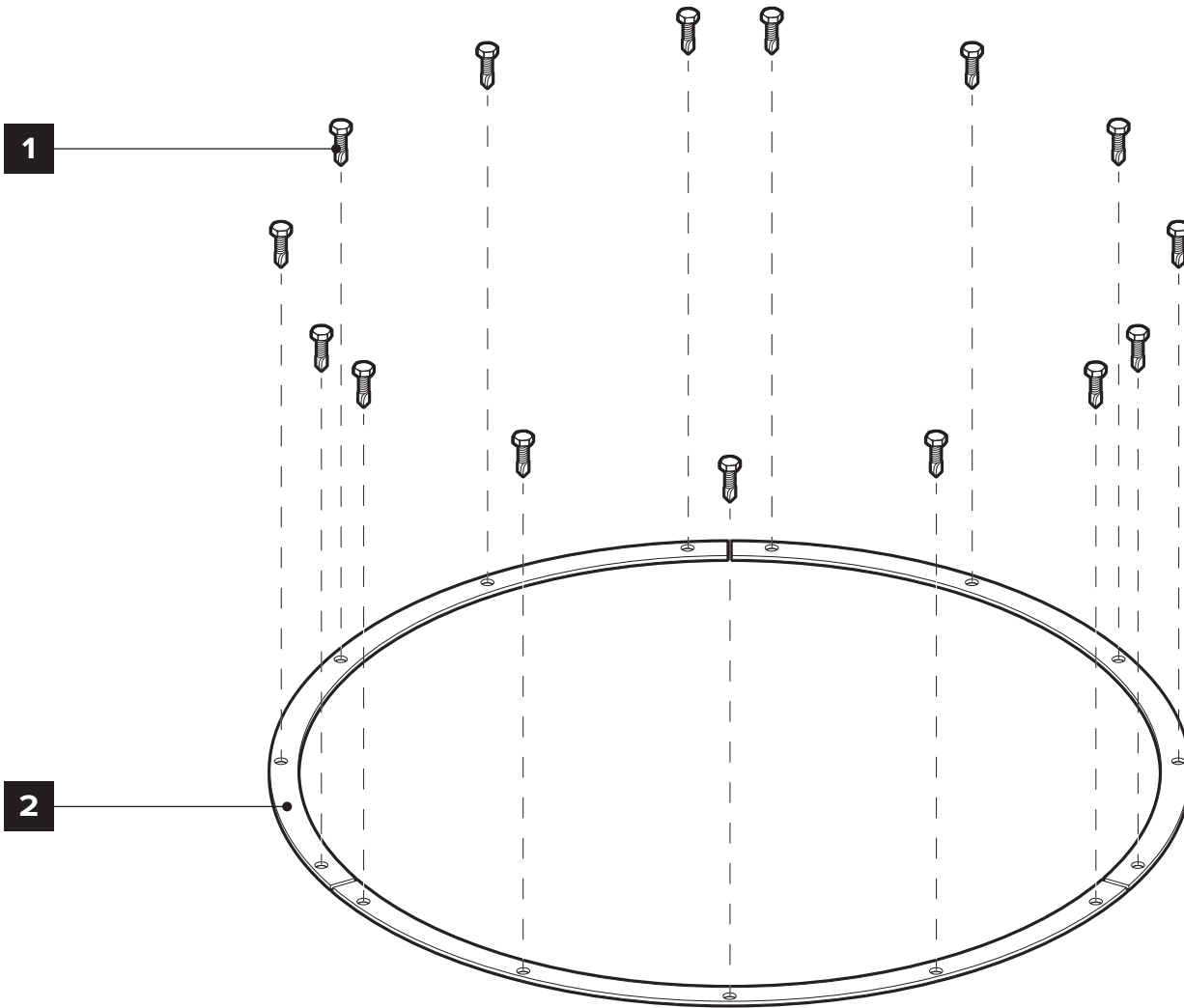
PART #: 8030-003-01

DATE: 03/30/2023

REV:

ECO:

GETTING TO KNOW THE CC1



-
1. Self Tapping Hex Head Screws (x15)
 2. Clamping Bars (x3)

INSTALLATION

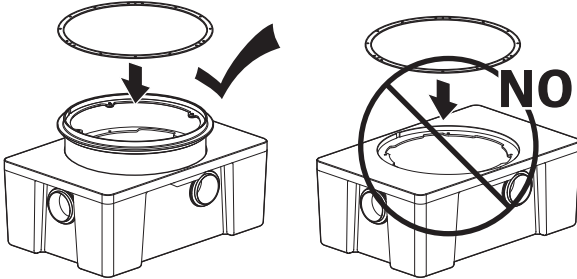
Special Precautions

- 1
- Read all instructions before installation
 - Install in conformance with all local codes

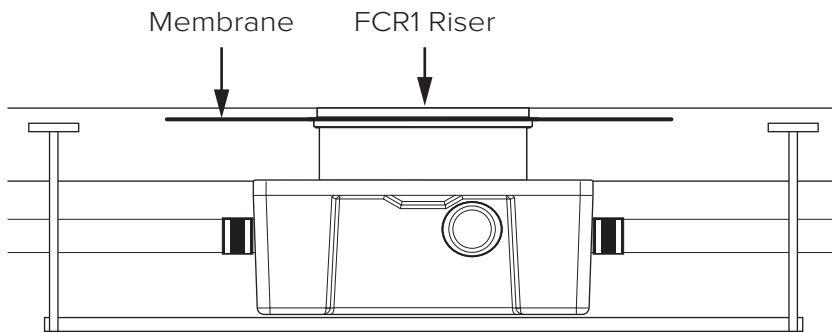
2

! CAUTION

The CC1 Clamping Collar Kit is designed to fasten to the FCR1 Field Cut Riser. **DO NOT** fasten directly to the body of the grease interceptor



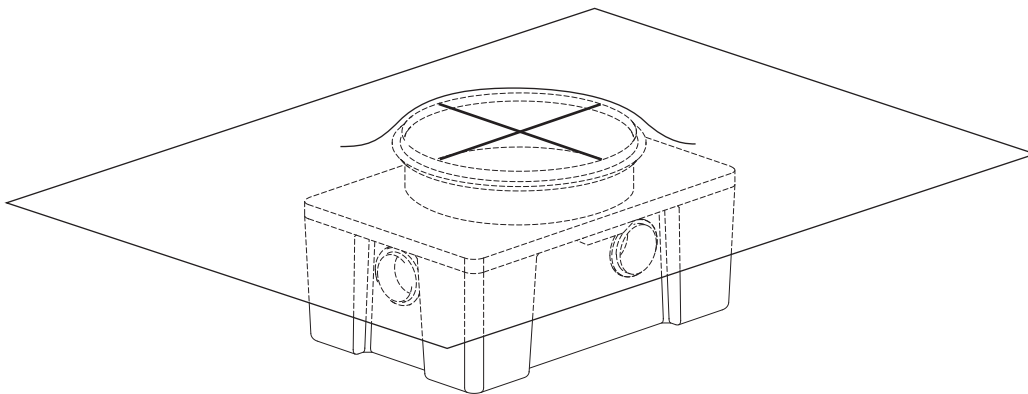
1 Lay Membrane



suspended installation

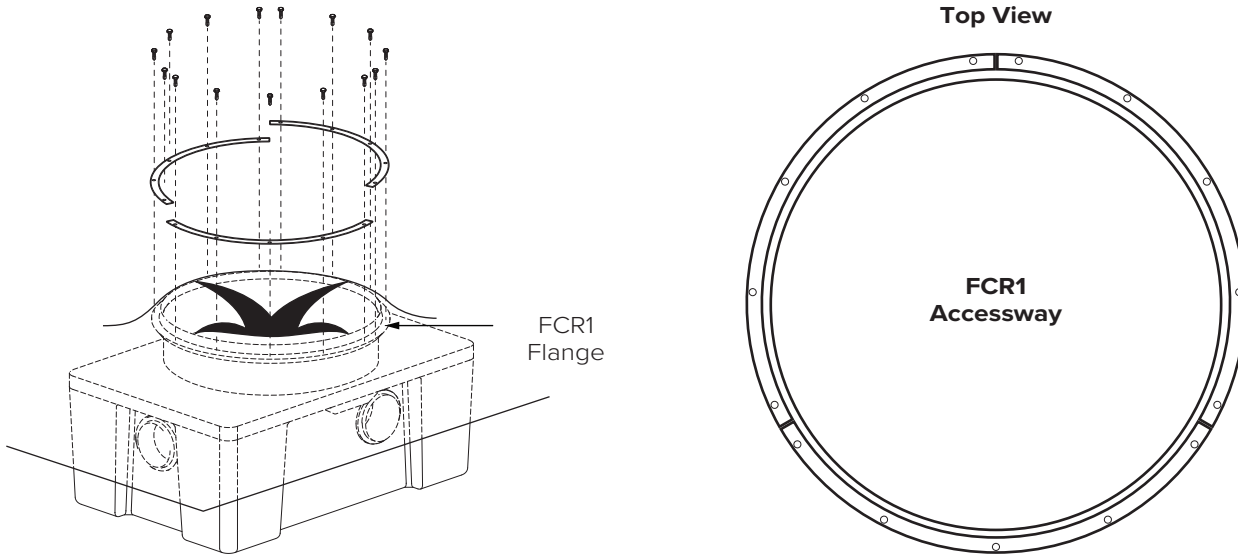
Lay membrane over the FCR1 riser

2 Cut Membrane



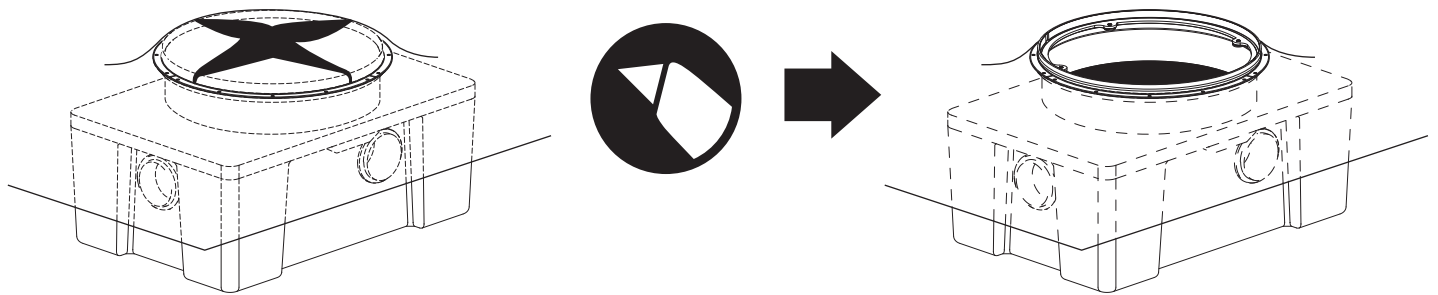
Cut a relief "+" pattern in the membrane directly over the opening of the FCR1 accessway.

3 Fasten Clamping Bars



Using the self tapping screws provided, fasten the (3) Clamping Bars directly to the flange of the FCR1

4 Remove Membrane from Accessway



Cut and remove membrane from the accessway of the FCR1

5 Complete the Finished Grade per the "Buried Installation" Instructions for your GB1, GB2, or GB3 Grease Interceptor